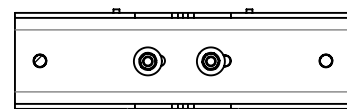
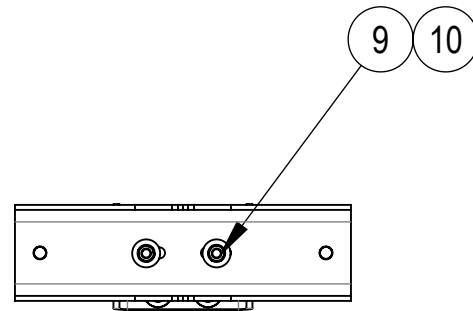
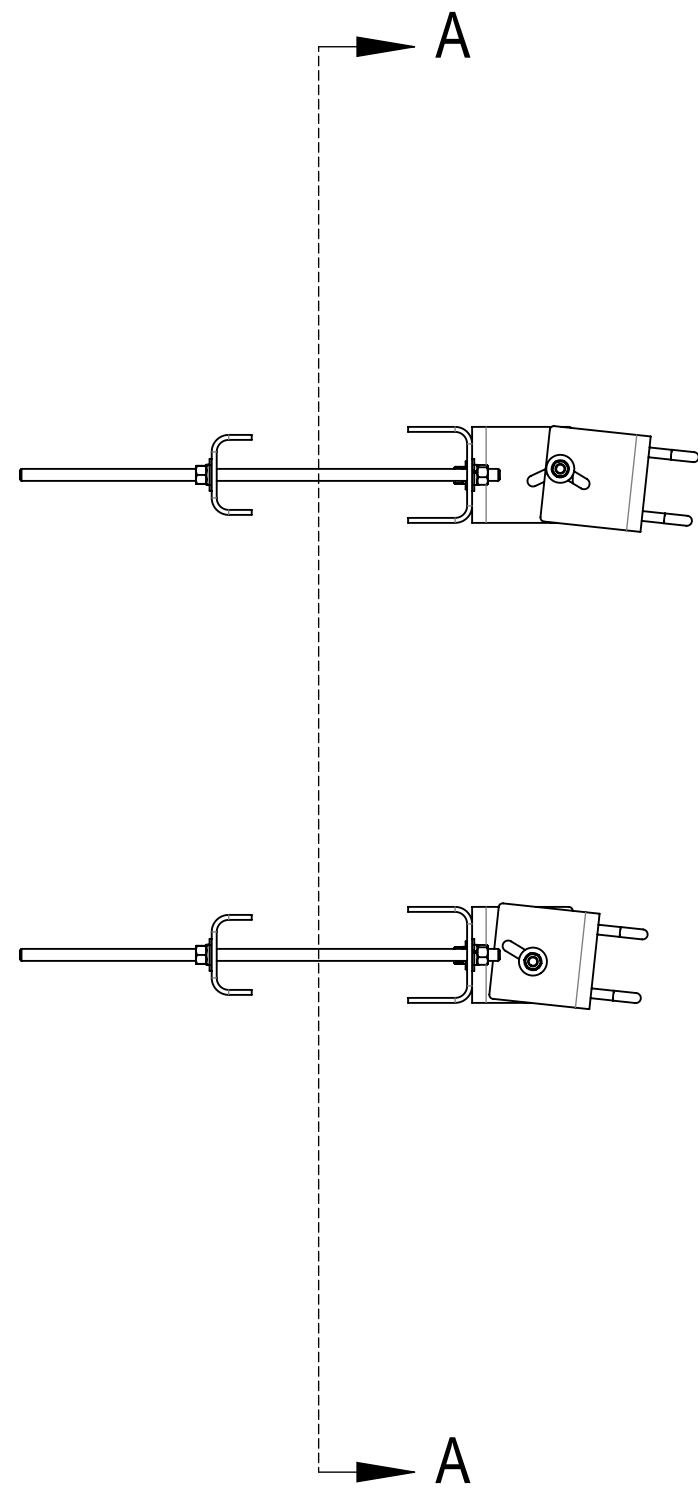
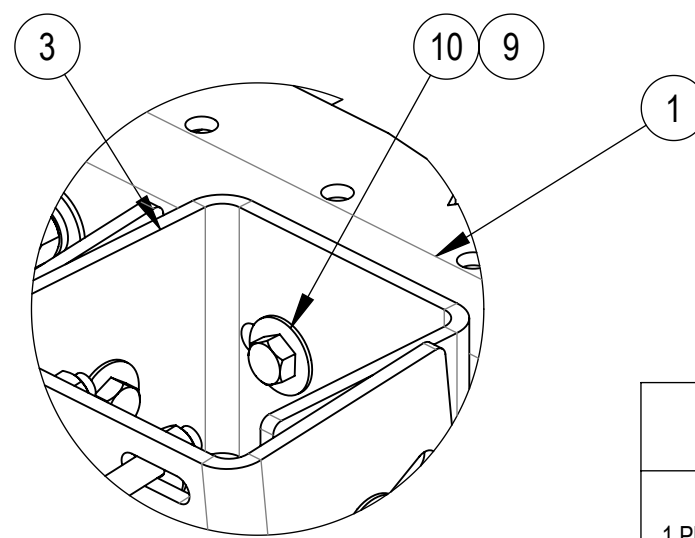
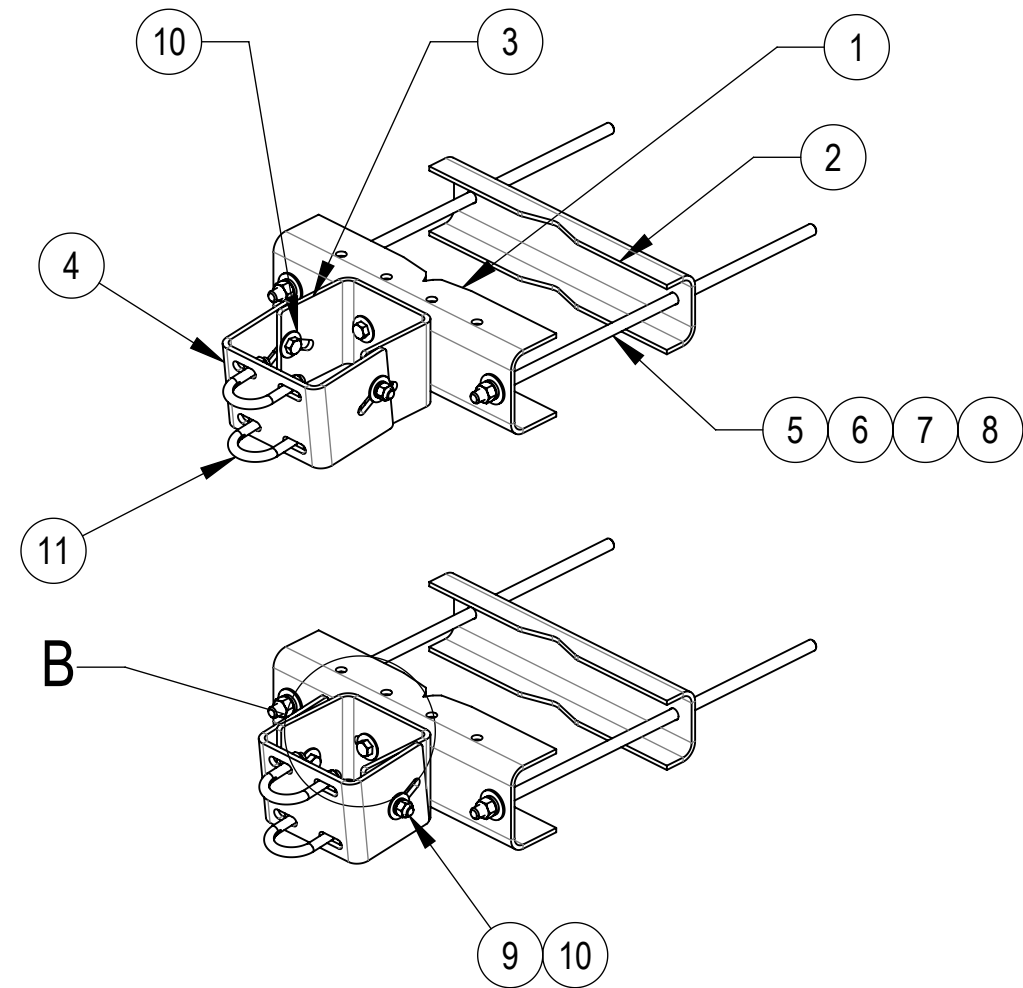


- 1.0 GENERAL NOTES
 1.1 ALL METRIC DIMENSIONS ARE IN BRACKETS [X.X]
 1.2 FOR PATENT INFO: <https://www.cs-pat.com>
 2.0 DESIGN NOTES
 2.1 FITS TOWER LEGS UP TO 16" ROUND OR 60° ANGLE, 12" 90° ANGLE.
 3.0 MANUFACTURING/SPECIAL REQUIREMENTS
 3.1 TIGHTEN ALL BOLTS SECURING FLAT PLATES BY THE TURN-OF-NUT METHOD. TIGHTEN ALL U-BOLTS USING TURN-OF-NUT METHOD WITH ATTENTION TO LEAVE EQUAL DISTANCE AND EQUAL FORCE ON EACH LEG OF THE U-BOLT.
 4.0 TEST
 5.0 PACKAGING
 5.1 PACKAGING SHALL MEET COMMScope REQUIREMENTS PER DOCUMENT IS-PL-3005.
 5.2 PRINTED DOCUMENT TO BE PLACED INSIDE POLYBAG AND THEN IN SHIPPING CONTAINER.
 5.3 EXTRA HARDWARE MAY BE SUPPLIED, BAGGED AND SHIPPED.

| REVISIONS | | | |
|-----------|------------------------------------|-------------------|----------------------|
| REV. | DESCRIPTION | DATE | APPROVED |
| A | INDIVIDUAL DRAWING INITIAL RELEASE | YX1027 14JUN24 | AIBIN 40198118CMO |



SECTION A-A



DETAIL B
SCALE 1 : 4

COMPONENT PART NUMBERS PROVIDED FOR ASSEMBLY PURPOSES;
 INDIVIDUAL COMPONENTS MAY BE SHIPPED AS PARTS WITHIN AN INCLUDED KIT.

| ITEM NO. | PART NUMBER | DESCRIPTION | QTY. | WEIGHT | NOTE NO. |
|----------|-------------|--|------|-----------|----------|
| 1 | SMU201601 | LARGE SADDLE MOUNT, 16" TOWER LEG | 2 | 22.4 LBS | |
| 2 | SMU201602 | CLAMP PLATE | 2 | 15.5 LBS | |
| 3 | MTC985101 | INNER CHANNEL FOR MTC9851 MOUNT | 2 | 11.52 LBS | |
| 4 | MTC985102 | OUTER CHANNEL | 2 | 11.78 LBS | |
| 5 | MT38430B7 | 3/4" X 30" GALV THREADED ROD, GRADE B7 | 4 | 3.7 LBS | |
| 6 | GWf-06 | 3/4" GALV FLAT WASHER | 8 | 0.10 LBS | |
| 7 | GWl-06 | 3/4" GALV LOCK WASHER | 8 | 0.04 LBS | |
| 8 | GN-06 | 3/4" GALV HEX NUT | 8 | 0.15 LBS | |
| 9 | GB-0520A | 5/8" X 2" GALV BOLT KIT (A325) | 8 | 0.26 LBS | |
| 10 | GWf-05 | 5/8" GALV FLAT WASHER, 1.7OD | 16 | 0.06 LBS | |
| 11 | GUB52440 | 5/8" X 2-1/2" X 4" GALV U-BOLT | 4 | 0.9 LBS | |

| | | |
|--------------|---------|---------------------|
| DENSITY | | lbs/in ³ |
| MASS | 148.33 | lbs |
| VOLUME | 526.28 | in ³ |
| SURFACE AREA | 3566.48 | in ² |
| HEIGHT | 36.57" | |
| LENGTH | 21" | |
| WIDTH | 42.46" | |

COMMScope, INC. OF NORTH CAROLINA

| | | | |
|--|----------------------------|---|------------|
| TOLERANCES | | SAP MATERIAL MASTER | |
| 1 PLACE .X[X] ± .12[0.3] | 3 PLACE .XXX[X] ± .03[0.8] | PML-SC2-B | |
| 2 PLACE .XX[X] ± .06[1.5] | ANGLES ± 2° | | |
| FINISH | | MATERIAL | |
| <small>UNLESS OTHERWISE SPECIFIED DIMENSIONS ARE IN INCHES INTERPRET PER ANSI Y 14.5M-1994</small> | | NAME | DATE |
| | | CE YX1027 | 14JUN24 |
| | | RW YX1027 | 06/14/2024 |
| | | AD YMENG | 06/21/2024 |
| RE YMENG | 06/26/2024 | LARGE LEG OPEN FACE UNIV. PIPE MOUNT | |
| ECN 40198118CMO | SCALE 1:16 | DOCUMENT NO. PML-SC2-B | |
| SIZE | Auth Group | INSL | MODEL |
| C | | | |
| VERSION | STATUS | REVISION | VERSION |
| 01 | RE | B | 00 |
| DRAWING | | STATUS | REVISION |
| | | RE | A |
| SHEET | | | 1 OF 1 |