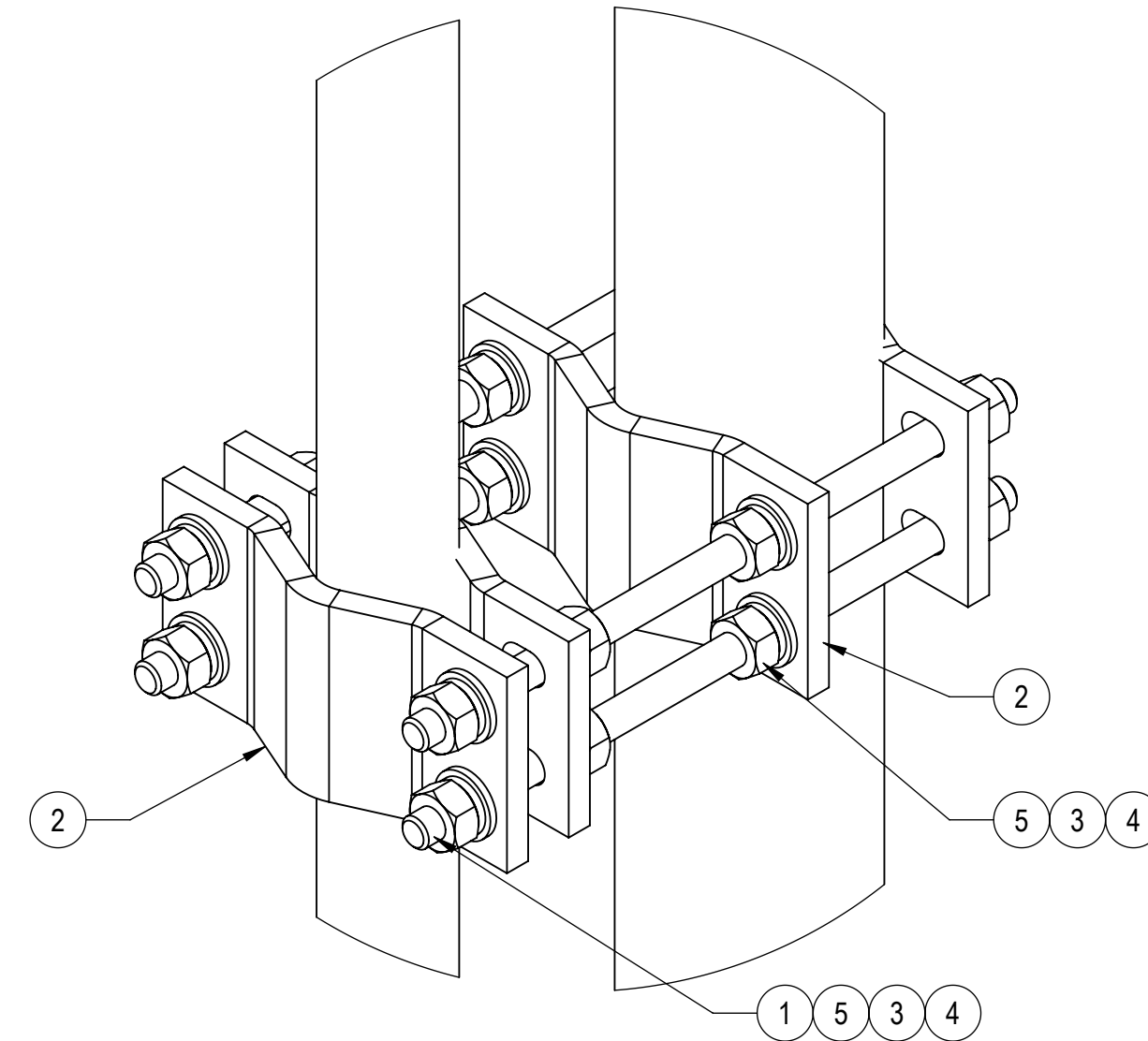
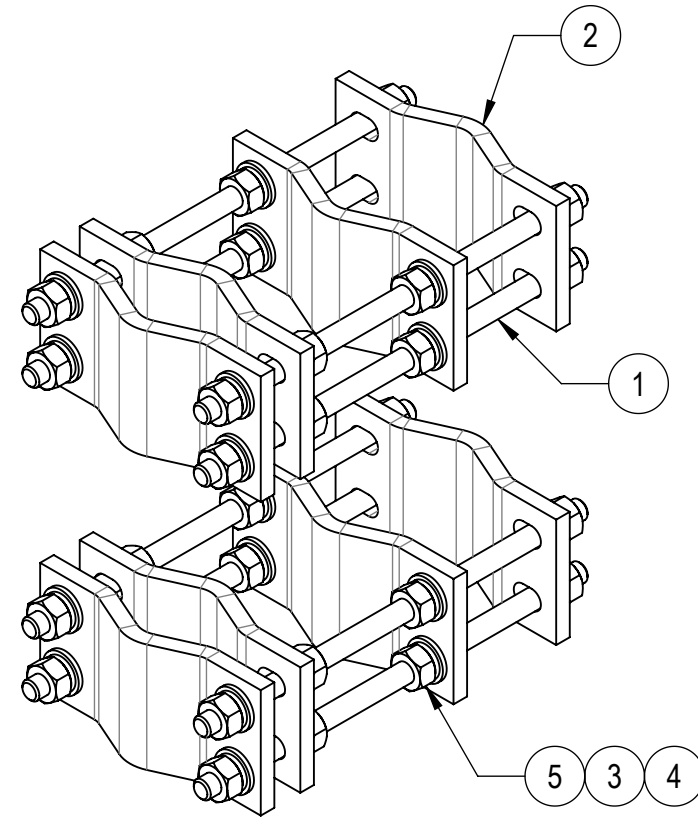
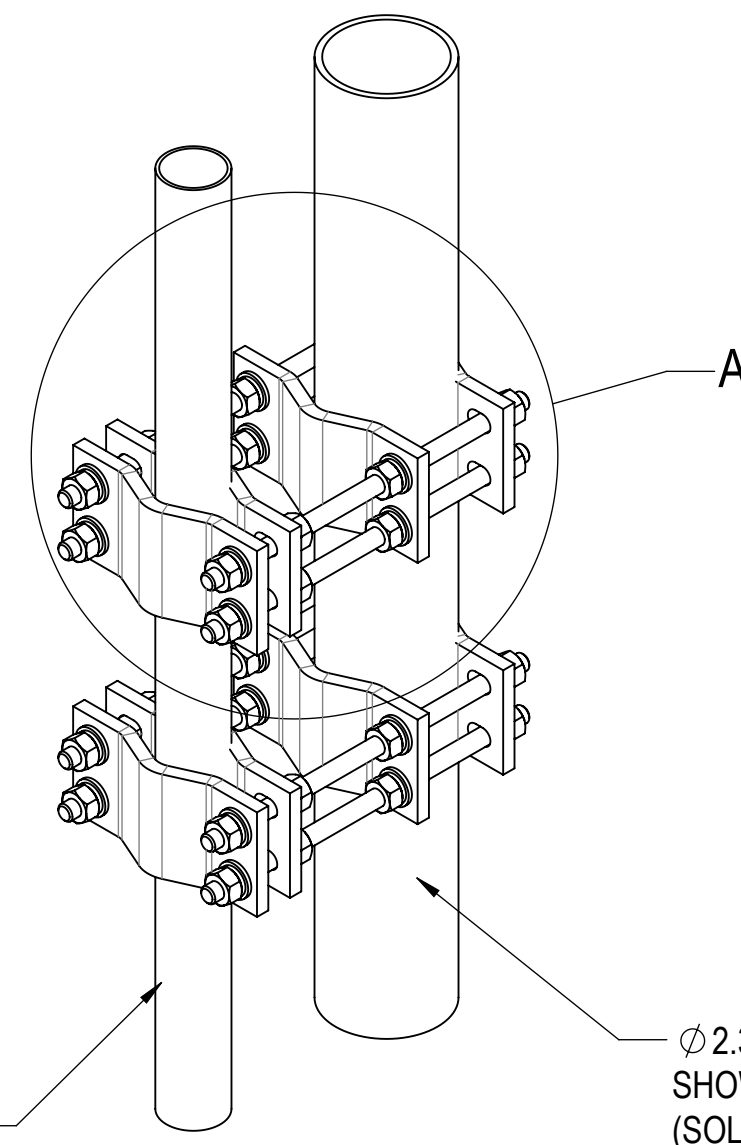
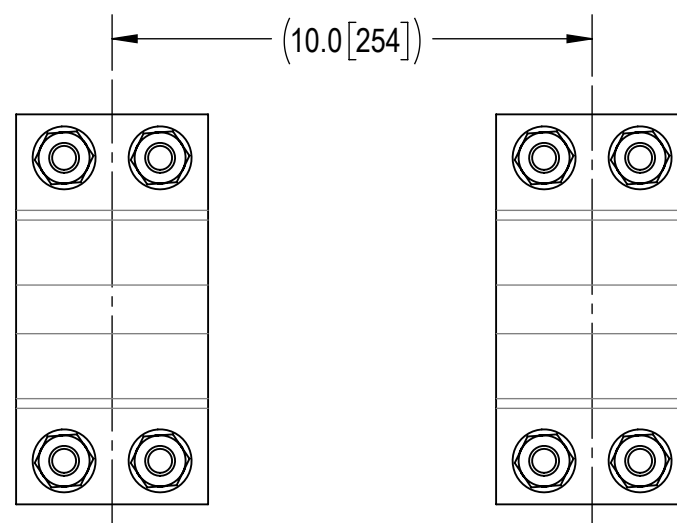
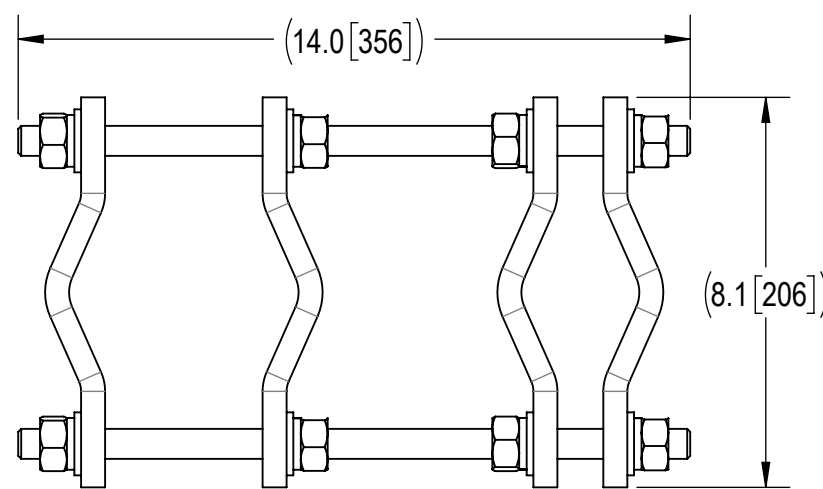


- 1.0 GENERAL NOTES
 1.1 ALL METRIC DIMENSIONS ARE IN BRACKETS [X. X]
 1.2 FOR PATENT INFO: <https://www.cs-pat.com>
 2.0 DESIGN NOTES
 2.1 ANY HAZARDS OR OBSTRUCTIONS TO THE CLIMBING FACILITY AND SAFETY CLIMB MUST BE IDENTIFIED PRIOR TO INSTALLING THE APPURTENANCE. ADDITIONAL PRODUCTS MAY BE REQUIRED TO MAINTAIN THE INTEGRITY OF THE SAFETY CLIMB. DURING INSTALLATION, TEMPORARY AND/OR PERMANENT PRECAUTIONARY MEASURES SHOULD BE TAKEN TO PRESERVE THE CLIMBING FACILITY AND/OR SAFETY CLIMB.
 3.0 MANUFACTURING/SPECIAL REQUIREMENTS
 3.1 TIGHTEN ALL BOLTS SECURING FLAT PLATES BY THE TURN-OF-NUT METHOD. TIGHTEN ALL U-BOLTS USING TURN-OF-NUT METHOD WITH ATTENTION TO LEAVE EQUAL DISTANCE AND EQUAL FORCE ON EACH LEG OF THE U-BOLT.
 4.0 TEST
 5.0 PACKAGING
 5.1 PACKAGING SHALL MEET COMMSCOPE REQUIREMENTS PER DOCUMENT IS-PL-3005
 5.2 PRINTED DOCUMENT TO BE PLACED INSIDE POLYBAG AND THEN IN SHIPPING CONTAINER
 5.3 EXTRA HARDWARE MAY BE SUPPLIED, BAGGED AND SHIPPED

REVISIONS			
REV.	DESCRIPTION	DATE	APPROVED
A	INITIAL RELEASE	MSM 15JUN12	TP
B	CHG BOM; ADD PACK	CEB 17MAR16	TP
C	UPDATED DRAWING FORMAT	LL1090 18JUL24	BA1025 40200499CMO



Ø 2.375" TO Ø 5" O.D. PIPE SHOWN FOR REFERENCE (SOLD SEPARATELY)

DETAIL A
SCALE 1 : 3

COMPONENT PART NUMBERS PROVIDED FOR ASSEMBLY PURPOSES; INDIVIDUAL COMPONENTS MAY BE SHIPPED AS PARTS WITHIN AN INCLUDED KIT.

ITEM NO.	PART NUMBER	DESCRIPTION	QTY.	WEIGHT	NOTE NO.
1	MT-382-14	5/8" X 14" GALV THREADED ROD	8	1.21 LBS	
2	DC-P10D	DUAL HALF CLAMP, 2-3/8" TO 5"	8	4.42 LBS	
3	GWL-05	5/8" GALV LOCK WASHER	32	0.03 LBS	
4	GWF05A	GALV FLAT WASHER HARDENED 5/8", 1.30D	32	0.04 LBS	
5	GN-05A	5/8" GALV HEX NUT (A194 2H)	32	0.12 LBS	

DENSITY	50.82	lbs/in ³
MASS	180.24	lbs
VOLUME	1163.25	in ³
SURFACE AREA		in ²
HEIGHT	14.0"	
LENGTH	14.0"	
WIDTH	8.1"	

© 2024 CommScope, Inc. Confidential

COMMSCOPE, INC. OF NORTH CAROLINA			
TOLERANCES		SAP MATERIAL MASTER	
1 PLACE .X[X] ± 0.12[3.0]	3 PLACE .XXX[X] ± 0.03[0.8]	BC-35-14D	
2 PLACE .XX[X] ± 0.06[1.5]	ANGLES ± 2°		
FINISH		MATERIAL	
UNLESS OTHERWISE SPECIFIED DIMENSIONS ARE IN INCHES INTERPRET PER ANSI Y 14.5M-1994	NAME	DATE	TITLE
	CE MSM	15JUN12	PIPE TO PIPE DUAL CLAMP, 2-3/8" TO 5"
	RW LL1090	07/22/2024	
	AD YMENG	07/22/2024	SCALE
	RE YMENG	07/22/2024	DOCUMENT NO.
ECN 40200499CMO		BC-35-14D	
SIZE	Auth Group	INSL	MODEL
C			VERSION
			STATUS
		REVISION	DRAWING
		01	01
		RE	RE
		B	B
			SHEET
			1 OF 1