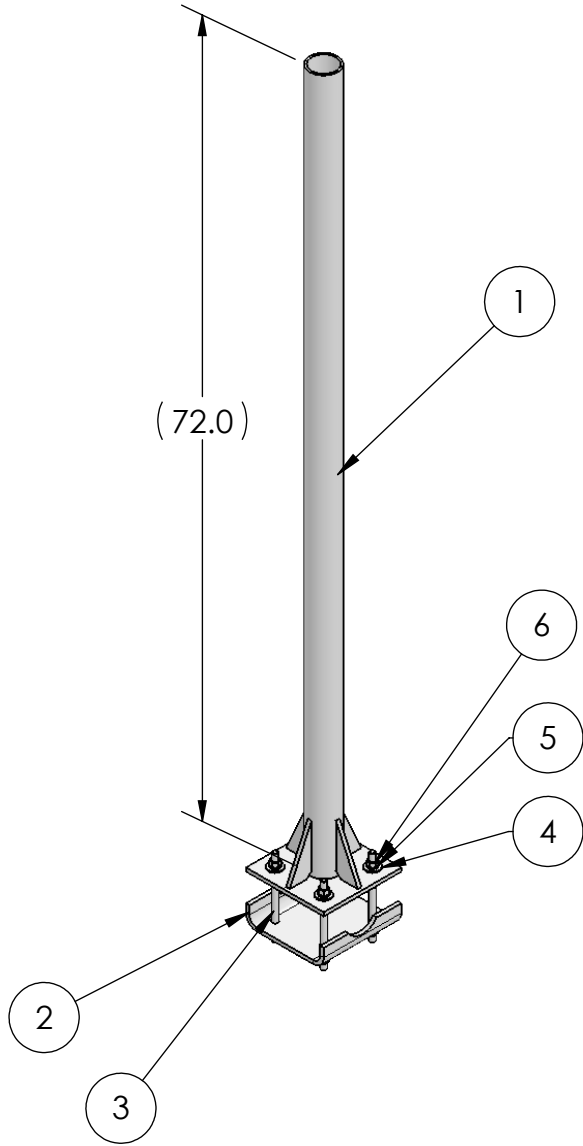


| REVISIONS | | | |
|-----------|-----------------|------------|----------|
| REV. | DESCRIPTION | DATE | APPROVED |
| A | INITIAL RELEASE | 10/01/2024 | MJP |



| ITEM NO. | PART NUMBER | DESCRIPTION | QTY. |
|----------|-------------|-----------------------------|------|
| 1 | MTC990901 | Antenna Mount Weldment | 1 |
| 2 | MTC990902 | Bottom Bracket | 1 |
| 3 | MT-379-8 | 1/2" X 8" GALV THREADED ROD | 4 |
| 4 | GWF-04 | 1/2" GALV FLAT WASHER | 8 |
| 5 | GWL-04 | 1/2" GALV LOCK WASHER | 8 |
| 6 | GN-04 | 1/2" GALV HEX NUT | 8 |

These drawings and specifications are the proprietary property of CommScope Inc. and may be used only for the specific purpose authorized in writing by CommScope Inc.

ALL DIMENSIONS ARE IN INCHES U.O.S.
TOLERANCES UNLESS OTHERWISE SPECIFIED:

| | | | |
|----------|------|-----------|-------|
| .X = ± | .12 | ANGLES | ±2° |
| .XX = ± | .06 | FRACTIONS | ±1/32 |
| .XXX = ± | .031 | | |

REMOVE BURRS AND BREAK EDGES .005

DO NOT SCALE THIS PRINT

| | |
|------------------|--------------------|
| DRAWN BY: MJP | SHEET: 1 of 1 |
| CHECKED BY: | SCALE: |
| DATE: | MATERIAL: |
| REVISION: A | FINISH: WEIGHT: |

PART NUMBER: CSMAS-RRU-006

DESCRIPTION:

DRAWING TYPE: