

8

7

6

5

4

3

2

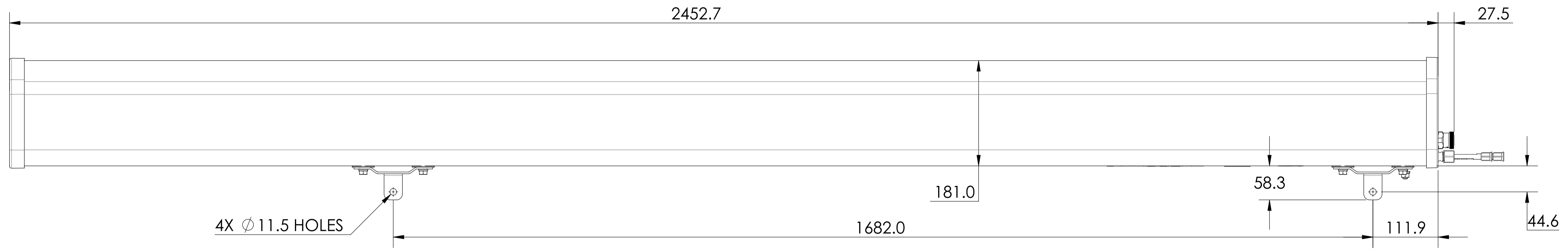
1

NOTES:

REVISION
G

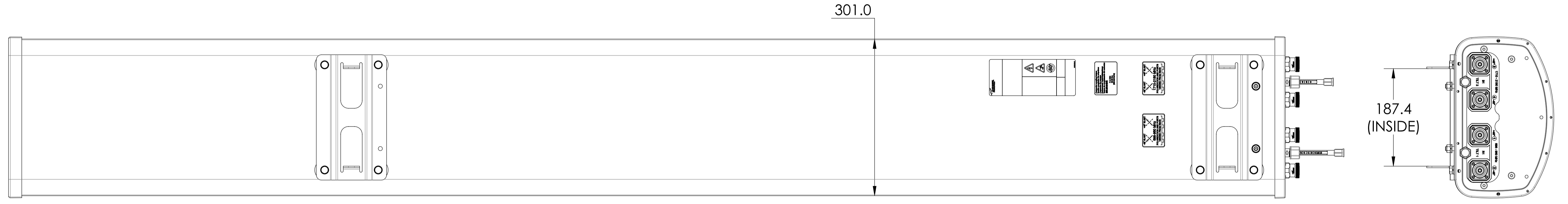
D

D



THIRD ANGLE PROJECTION

C



B

DBXRH-8585C-VTM

A

A

8

7

6

THIRD ANGLE PROJECTION

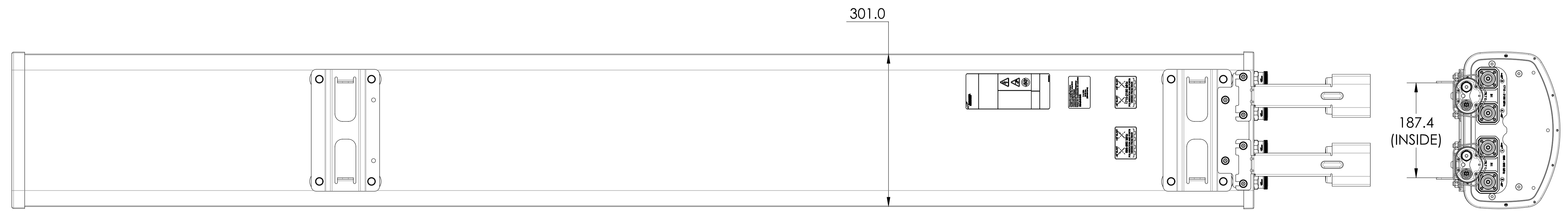
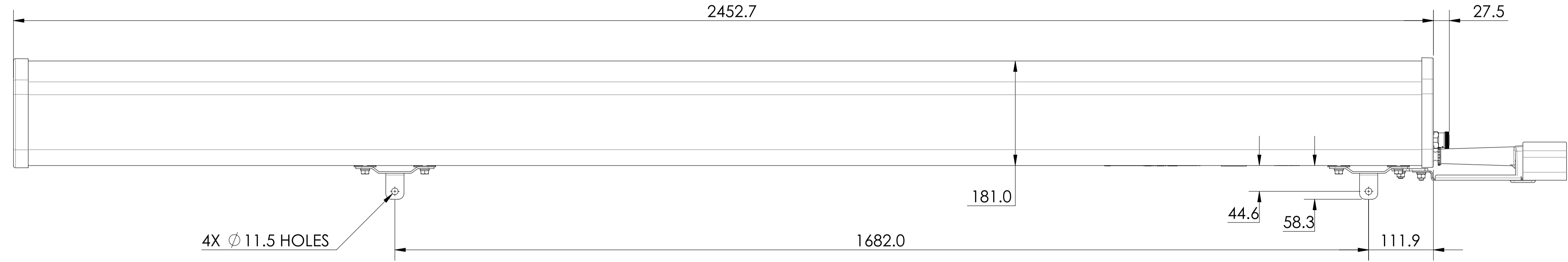
3

2

1

THIRD ANGLE PROJECTION

8 7 6 5 4 3 2 1



DBXRH-8585C-R2M  
DBXRH-8585C-A2M

8 7 6 3 2 1

THIRD ANGLE PROJECTION

8

7

6

5

4

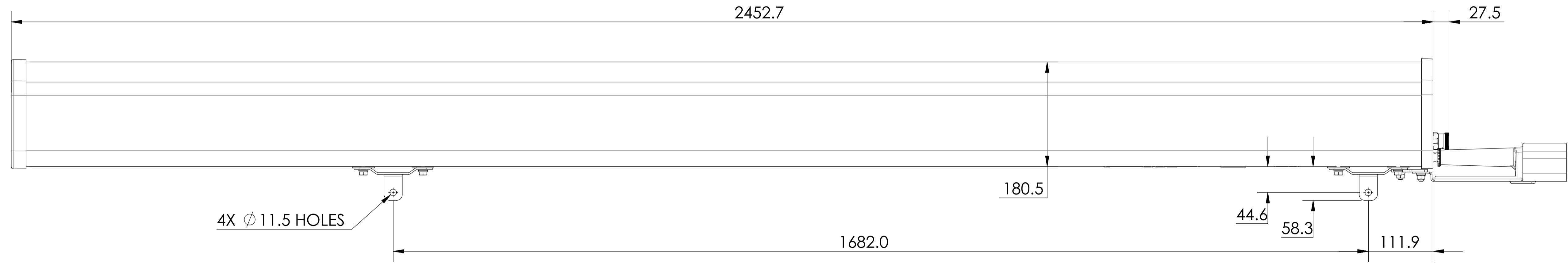
3

2

1

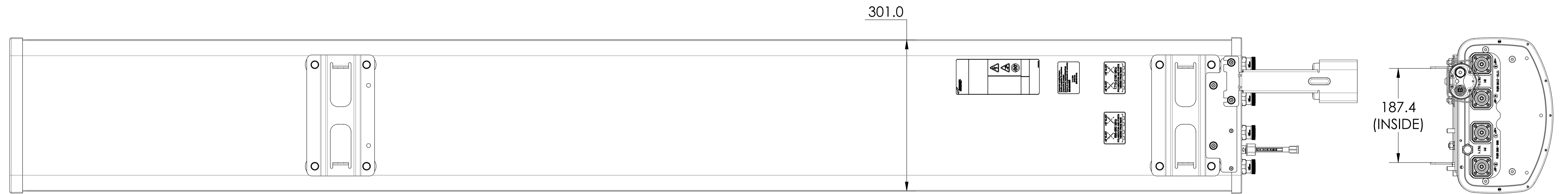
D

D



C

THIRD ANGLE PROJECTION



B

DBXRH-8585C-AHM

A

A

8

7

6

THIRD ANGLE PROJECTION

3

2

1

8

7

6

5

4

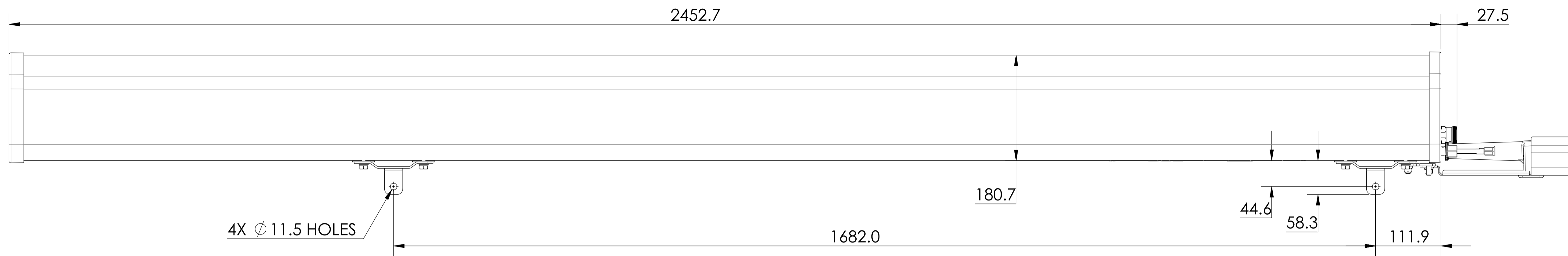
3

2

1

D

D



4X Ø 11.5 HOLES

1682.0

180.7

44.6

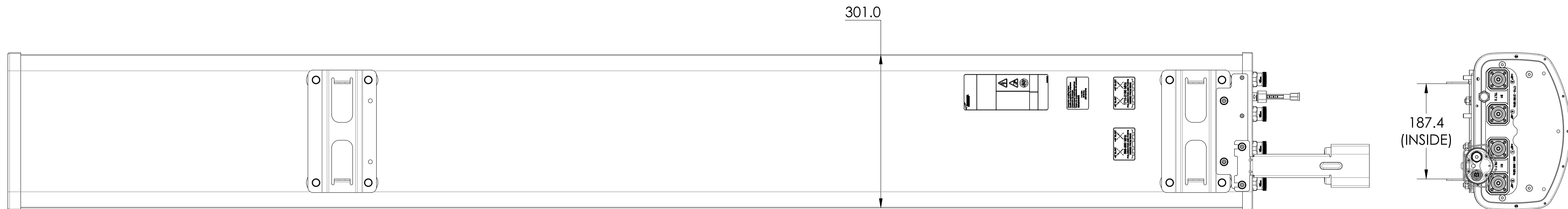
58.3

111.9

27.5

C

THIRD ANGLE PROJECTION



301.0

187.4  
(INSIDE)

B

DBXRH-8585C-ELM

A

A

8

7

6

THIRD ANGLE PROJECTION

3

2

1