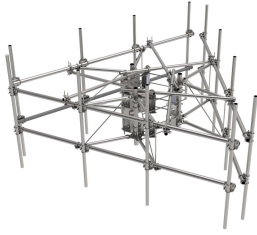


# MCG22HDX-11-9-120

---



G22HDX Monopole Sector Frame with extended face, 11 ft x 2.88 in OD face pipes. Includes nine 2.88 OD x 120 in antenna pipes

## Product Classification

<b>Product Type</b>	High capacity monopole sector frame
<b>Product Brand</b>	PIM-guard
<b>Product Series</b>	G2

## General Specifications

<b>Mounting</b>	Monopole, 381–1270 mm (15–50 in) OD
<b>Pipe, quantity</b>	9
<b>Sectors, quantity</b>	3

## Dimensions

<b>Face Width</b>	3.353 m   11 ft
<b>Width</b>	3,352.8 mm   132 in
<b>Face Support Pipe Diameter</b>	73.025 mm   2.875 in
<b>Mounting Diameter, maximum</b>	1270 mm   50 in
<b>Mounting Diameter, minimum</b>	381 mm   15 in
<b>Pipe Outer Diameter</b>	73.025 mm   2.875 in
<b>Stand-off Distance</b>	1,066.8 mm   42 in

## Material Specifications

<b>Material Type</b>	Hot dip galvanized steel
----------------------	--------------------------

## Mechanical Specifications

<b>Wind Rating</b>	For Specifications, please contact your local ANDREW representative
<b>Wind Rating Test Method</b>	TIA/EIA-222

## Packaging and Weights

<b>Included</b>	Mounting hardware   Plain end pipes (9)   Ring mounts (2)   Sector frames (3)   Stiff arm
-----------------	---

# MCG22HDX-11-9-120

---

**Packaging quantity** 1  
**Weight, net** 868.434 kg | 1,914.57 lb

## Regulatory Compliance/Certifications

<b>Agency</b>	<b>Classification</b>
CHINA-ROHS	Above maximum concentration value
ROHS	Compliant/Exempted
UK-ROHS	Compliant/Exempted



## \* Footnotes

**Wind Rating** BWS—Base Wind Speed; FBC—Florida Building Code