

# 4P-4M-B2



4-port sector antenna, 4x 1695–2690 MHz, 65° HPBW, 2x RET

- All Internal RET actuators are connected in “Cascaded SRET” configuration
- Uses the 4.3-10 connector which is 40 percent smaller than the 7-16 DIN connector

## General Specifications

<b>Antenna Type</b>	Sector
<b>Band</b>	Single band
<b>Color</b>	Light Gray (RAL 7035)
<b>Grounding Type</b>	RF connector inner conductor and body grounded to reflector and mounting bracket
<b>Performance Note</b>	Outdoor usage
<b>Radome Material</b>	Fiberglass, UV resistant
<b>Radiator Material</b>	Aluminum
<b>Reflector Material</b>	Aluminum
<b>RF Connector Interface</b>	4.3-10 Female
<b>RF Connector Location</b>	Bottom
<b>RF Connector Quantity, high band</b>	0
<b>RF Connector Quantity, mid band</b>	4
<b>RF Connector Quantity, low band</b>	0
<b>RF Connector Quantity, total</b>	4

## Remote Electrical Tilt (RET) Information

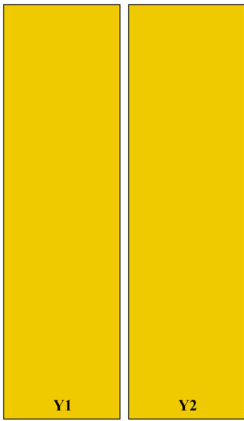
<b>RET Hardware</b>	CommRET v2
<b>RET Interface</b>	8-pin DIN Female   8-pin DIN Male
<b>RET Interface, quantity</b>	1 female   1 male
<b>Input Voltage</b>	10–30 Vdc
<b>Internal RET</b>	Mid band (2)
<b>Power Consumption, active state, maximum</b>	10 W
<b>Power Consumption, idle state, maximum</b>	2 W
<b>Protocol</b>	3GPP/AISG 2.0 (Single RET)

# 4P-4M-B2

## Dimensions

<b>Width</b>	257 mm   10.118 in
<b>Depth</b>	87 mm   3.425 in
<b>Length</b>	1757 mm   69.173 in
<b>Net Weight, antenna only</b>	12.5 kg   27.558 lb

## Array Layout



Array ID	Frequency (MHz)	RF Connector	HPBW	RET (SRET)	AISG No.	AISG RET UID
Y1	1695-2690	1 - 2	65°	1	AISG1	CPXXXXXXXXXXXXX1
Y2	1695-2690	3 - 4	65°	2	AISG1	CPXXXXXXXXXXXXX2

(Sizes of colored boxes are not true depictions of array sizes)

## Port Configuration



# 4P-4M-B2

## Electrical Specifications

<b>Impedance</b>	50 ohm
<b>Operating Frequency Band</b>	1695 – 2690 MHz
<b>Polarization</b>	±45°
<b>Total Input Power, maximum</b>	500 W

## Electrical Specifications

	Y1,Y2	Y1,Y2	Y1,Y2	Y1,Y2	Y1,Y2
<b>Frequency Band, MHz</b>	<b>1695–1880</b>	<b>1850–1990</b>	<b>1920–2200</b>	<b>2300–2500</b>	<b>2490–2690</b>
<b>RF Port</b>	1,2,3,4	1,2,3,4	1,2,3,4	1,2,3,4	1,2,3,4
<b>Gain, dBi</b>	18.2	18.6	18.9	18.8	18.8
<b>Beamwidth, Horizontal, degrees</b>	67	64	64	61	57
<b>Beamwidth, Vertical, degrees</b>	5.7	5.4	5.1	4.3	4
<b>Beam Tilt, degrees</b>	2–12	2–12	2–12	2–12	2–12
<b>USLS (First Lobe), dB</b>	19	21	21	20	18
<b>Front-to-Back Ratio, Copolarization 180° ± 30°, dB</b>	30	32	32	32	32
<b>Isolation, Cross Polarization, dB</b>	28	28	28	28	28
<b>Isolation, Inter-band, dB</b>	28	28	28	28	28
<b>VSWR   Return loss, dB</b>	1.5 14.0	1.5 14.0	1.5 14.0	1.5 14.0	1.5 14.0
<b>PIM, 3rd Order, 2 x 20 W, dBc</b>	-153	-153	-153	-153	-153
<b>Input Power per Port, maximum, watts</b>	200	200	200	200	200

## Mechanical Specifications

<b>Wind Loading @ Velocity, frontal</b>	368.0 N @ 150 km/h (82.7 lbf @ 150 km/h)
<b>Wind Loading @ Velocity, lateral</b>	95.0 N @ 150 km/h (21.4 lbf @ 150 km/h)
<b>Wind Loading @ Velocity, rear</b>	315.0 N @ 150 km/h (70.8 lbf @ 150 km/h)
<b>Wind Speed, maximum</b>	241 km/h (150 mph)

## Packaging and Weights

<b>Width, packed</b>	352 mm   13.858 in
<b>Depth, packed</b>	207 mm   8.15 in

# 4P-4M-B2

---

**Length, packed** 1937 mm | 76.26 in

**Weight, gross** 20 kg | 44.092 lb

## Regulatory Compliance/Certifications

**Agency**

ISO 9001:2015

**Classification**

Designed, manufactured and/or distributed under this quality management system

## Included Products

- BSAMNT-B95-01 – Wide Profile Antenna Downtilt Mounting Kit for 2.4 - 4.5 in (60 - 115 mm) OD round members. Kit contains one scissor top bracket set and one bottom bracket set.

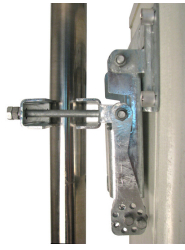
## \* Footnotes

**Performance Note**

Severe environmental conditions may degrade optimum performance

# BSAMNT-B95-01

---



Wide Profile Antenna Downtilt Mounting Kit for 2.4 - 4.5 in (60 - 115 mm) OD round members. Kit contains one scissor top bracket set and one bottom bracket set.

## Product Classification

**Product Type** Downtilt mounting kit

## General Specifications

**Application** Outdoor

**Color** Silver

## Dimensions

**Compatible Diameter, maximum** 115 mm | 4.528 in

**Compatible Diameter, minimum** 61 mm | 2.402 in

## Material Specifications

**Material Type** Galvanized steel

## Packaging and Weights

**Included** Brackets | Hardware

**Packaging quantity** 2

**Weight, gross** 3.6 kg | 7.937 lb

## Regulatory Compliance/Certifications

### Agency

CE  
ISO 9001:2015

### Classification

Compliant with the relevant CE product directives  
Designed, manufactured and/or distributed under this quality management system

