

# RRV4-65A-R6VB-V2



12-port sector antenna, 4x 694–960 and 8x 1695–2690 MHz, 65° HPBW, 6x RET

- All Internal RET actuators are connected in "Cascaded SRET" configuration
- Array configuration provides capability for 4T4R (4x MIMO) on Low band and Dual 4T4R (4x MIMO) on High band
- Non-stacked high band array design provides higher gain and narrower vertical beamwidth than traditional antenna designs

## General Specifications

<b>Antenna Type</b>	Sector
<b>Band</b>	Multiband
<b>Color</b>	Light Gray (RAL 7035)
<b>Grounding Type</b>	RF connector inner conductor and body grounded to reflector and mounting bracket
<b>Performance Note</b>	Outdoor usage
<b>Radome Material</b>	Fiberglass, UV resistant
<b>Radiator Material</b>	Aluminum
<b>Reflector Material</b>	Aluminum
<b>RF Connector Interface</b>	4.3-10 Female
<b>RF Connector Location</b>	Bottom
<b>RF Connector Quantity, high band</b>	0
<b>RF Connector Quantity, mid band</b>	8
<b>RF Connector Quantity, low band</b>	4
<b>RF Connector Quantity, total</b>	12

## Remote Electrical Tilt (RET) Information

<b>RET Hardware</b>	CommRET v2
<b>RET Interface</b>	8-pin DIN Female   8-pin DIN Male
<b>RET Interface, quantity</b>	1 female   1 male
<b>Input Voltage</b>	10–30 Vdc
<b>Internal RET</b>	Low band (2)   Mid band (4)
<b>Power Consumption, active state, maximum</b>	10 W
<b>Power Consumption, idle state, maximum</b>	2 W

# RRV4-65A-R6VB-V2

**Protocol** 3GPP/AISG 2.0 (Single RET)

## Dimensions

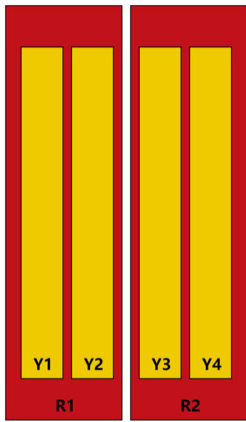
**Width** 499 mm | 19.646 in

**Depth** 199 mm | 7.835 in

**Length** 1490 mm | 58.661 in

**Net Weight, antenna only** 28.8 kg | 63.493 lb

## Array Layout



Array ID	Frequency (MHz)	RF Connector	HPBW	RET (SRET)	AISG No.	RET UID
R1	694-960	1 - 2	65°	1	AISG1	CPxxxxxxxxxxxxxxxxR1
R2	694-960	3 - 4	65°	2	AISG1	CPxxxxxxxxxxxxxxxxR2
Y1	1695-2690	5 - 6	65°	3	AISG1	CPxxxxxxxxxxxxxxxxY1
Y2	1695-2690	7 - 8	65°	4	AISG1	CPxxxxxxxxxxxxxxxxY2
Y3	1695-2690	9 - 10	65°	5	AISG1	CPxxxxxxxxxxxxxxxxY3
Y4	1695-2690	11 - 12	65°	6	AISG1	CPxxxxxxxxxxxxxxxxY4

(Sizes of colored boxes are not true depictions of array sizes)

## Port Configuration



## Electrical Specifications

**Impedance** 50 ohm

**Operating Frequency Band** 1695 – 2690 MHz | 694 – 960 MHz

# RRV4-65A-R6VB-V2

<b>Polarization</b>	±45°
<b>Total Input Power, maximum</b>	1,000 W

## Electrical Specifications

	<b>R1,R2</b>	<b>R1,R2</b>	<b>R1,R2</b>	<b>Y1-Y4</b>	<b>Y1-Y4</b>	<b>Y1-Y4</b>	<b>Y1-Y4</b>
<b>Frequency Band, MHz</b>	<b>694–806</b>	<b>790–894</b>	<b>890–960</b>	<b>1695–1995</b>	<b>1920–2300</b>	<b>2300–2500</b>	<b>2490–2690</b>
<b>RF Port</b>	1-4	1-4	1-4	5-12	5-12	5-12	5-12
<b>Gain, dBi</b>	14.2	14.7	14.9	17.5	17.8	18.1	18.4
<b>Beamwidth, Horizontal, degrees</b>	65	61	67	68	66	62	56
<b>Beamwidth, Vertical, degrees</b>	15.9	14.4	13.4	6.4	5.9	5.1	4.8
<b>Beam Tilt, degrees</b>	2–16	2–16	2–16	2–12	2–12	2–12	2–12
<b>USLS (First Lobe), dB</b>	18	19	20	16	20	19	17
<b>Front-to-Back Ratio, Copolarization 180° ± 30°, dB</b>	25	27	28	26	27	27	26
<b>Isolation, Cross Polarization, dB</b>	25	25	25	25	25	25	25
<b>Isolation, Inter-band, dB</b>	25	25	25	25	25	25	25
<b>VSWR   Return loss, dB</b>	1.5 14.0	1.5 14.0	1.5 14.0	1.5 14.0	1.5 14.0	1.5 14.0	1.5 14.0
<b>PIM, 3rd Order, 2 x 20 W, dBc</b>	-153	-153	-153	-153	-153	-153	-153
<b>Input Power per Port, maximum, watts</b>	250	250	250	200	200	200	200

## Mechanical Specifications

<b>Wind Loading @ Velocity, frontal</b>	422.0 N @ 150 km/h (94.9 lbf @ 150 km/h)
<b>Wind Loading @ Velocity, lateral</b>	197.0 N @ 150 km/h (44.3 lbf @ 150 km/h)
<b>Wind Loading @ Velocity, rear</b>	748.0 N @ 150 km/h (168.2 lbf @ 150 km/h)
<b>Wind Speed, maximum</b>	200 km/h (124 mph)

## Packaging and Weights

<b>Width, packed</b>	570 mm   22.441 in
<b>Depth, packed</b>	275 mm   10.827 in
<b>Length, packed</b>	1775 mm   69.882 in
<b>Weight, gross</b>	39.7 kg   87.523 lb

## Regulatory Compliance/Certifications

# RRV4-65A-R6VB-V2

---

**Agency**

ISO 9001:2015

UK-ROHS

**Classification**

Designed, manufactured and/or distributed under this quality management system

Compliant

## Included Products

BSAMNT-B92-08

- Wide Profile Antenna Downtilt Mounting Kit for 2.4 - 4.5 in (60 - 115 mm) OD round members. Kit contains one scissor top bracket set and one bottom bracket set.

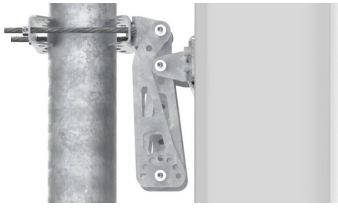
## \* Footnotes

**Performance Note**

Severe environmental conditions may degrade optimum performance

# BSAMNT-B92-08

---



Wide Profile Antenna Downtilt Mounting Kit for 2.4 - 4.5 in (60 - 115 mm) OD round members. Kit contains one scissor top bracket set and one bottom bracket set.

## Product Classification

**Product Type** Downtilt mounting kit

## General Specifications

**Application** Outdoor

**Color** Silver

## Dimensions

**Compatible Diameter, maximum** 115 mm | 4.528 in

**Compatible Diameter, minimum** 60 mm | 2.362 in

**Weight, net** 4.4 kg | 9.7 lb

## Material Specifications

**Material Type** Galvanized steel

## Packaging and Weights

**Included** Brackets | Hardware

**Weight, gross** 4.8 kg | 10.582 lb

## Regulatory Compliance/Certifications

Agency	Classification
CE	Compliant with the relevant CE product directives
ISO 9001:2015	Designed, manufactured and/or distributed under this quality management system

