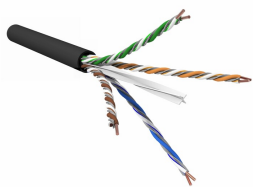


760260685 | 3073A BLK C6 4/21 U/UTP R1000



GigaREACH™ XL 3073A Category 6 U/UTP Cable, low smoke zero halogen, black jacket, 4 pair count, 1000 ft (305 m) length, reel

Product Classification

| | |
|-----------------------|--|
| Regional Availability | Asia Australia/New Zealand China EMEA Europe India Latin America |
| Portfolio | SYSTIMAX® |
| Product Type | Twisted pair cable |
| Product Brand | GigaREACH™ XL |

General Specifications

| | |
|-------------------------|---|
| Product Number | 3073A |
| ANSI/TIA Category | 6 |
| Cable Component Type | Horizontal |
| Cable Type | U/UTP (unshielded) |
| Conductor Type, singles | Solid |
| Conductors, quantity | 8 |
| Jacket Color | Black |
| Pairs, quantity | 4 |
| Separator Type | Isolator Tape separator |
| Transmission Standards | ANSI/TIA-568-D.2 CENELEC EN 50288-6-1 ISO/IEC 11801 Class E |

Dimensions

| | |
|-------------------------------|---------------------|
| Cable Length | 304.8 m 1000 ft |
| Diameter Over Jacket, nominal | 6.782 mm 0.267 in |
| Jacket Thickness | 0.635 mm 0.025 in |
| Conductor Gauge, singles | 21 AWG |

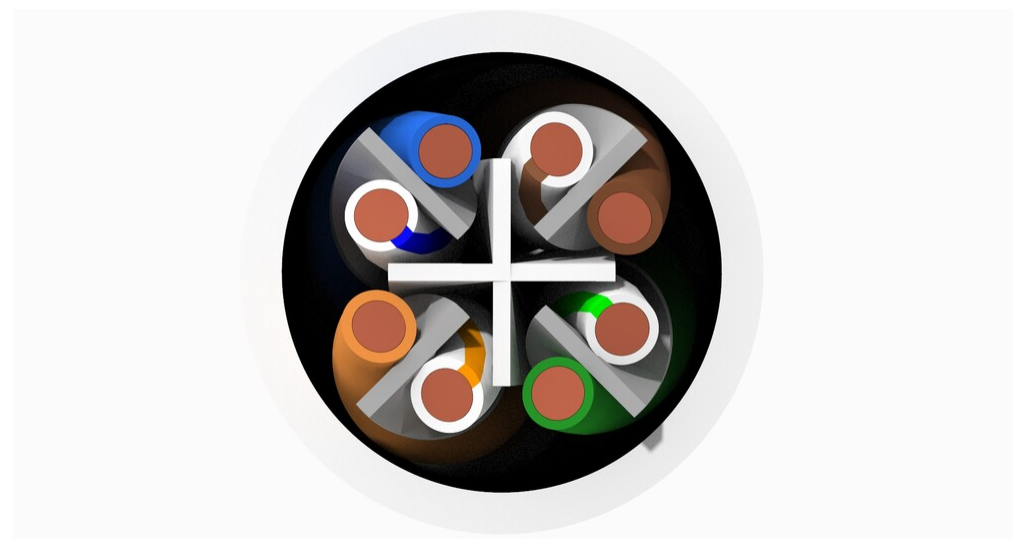
Electrical Specifications

| | |
|----------------------------------|----------------------------|
| Insertion Loss Margin | 20% to Category 6 standard |
| Characteristic Impedance | 100 ohm |
| dc Resistance Unbalance, maximum | 5 % |

760260685 | 3073A BLK C6 4/21 U/UTP R1000

| | |
|---------------------------------------|---|
| dc Resistance, maximum | 4.69 ohms/100 m 1.43 ohms/100 ft |
| Delay Skew, maximum | 45 ns |
| Dielectric Strength, minimum | 1500 Vac 2500 Vdc |
| Mutual Capacitance at Frequency | 6.4 nF/100 m @ 1 kHz |
| Nominal Velocity of Propagation (NVP) | 70 % |
| Operating Frequency, maximum | 250 MHz |
| Operating Voltage, maximum | 80 V |
| Remote Powering | Fully complies with the recommendations set forth by IEEE 802.3bt (Type 4) for the safe delivery of power over LAN cable when installed according to ISO/IEC 14763-2, CENELEC EN 50174-1, CENELEC EN 50174-2 or TIA TSB-184-A |
| Safety Voltage Rating | 300 V |
| Segregation Class | c |

Representative Image



Material Specifications

| | |
|---------------------|-------------------------------|
| Conductor Material | Bare copper |
| Insulation Material | Polyolefin |
| Jacket Material | Low Smoke Zero Halogen (LSZH) |
| Separator Material | Polyolefin |

Mechanical Specifications

| | |
|--------------------------|------------------|
| Pulling Tension, maximum | 11.34 kg 25 lb |
|--------------------------|------------------|

Environmental Specifications

| | |
|--|--|
| Installation temperature | 0 °C to +60 °C (+32 °F to +140 °F) |
| Operating Temperature | -20 °C to +60 °C (-4 °F to +140 °F) |
| Acid Gas Test Method | IEC 60754-2 |
| EN50575 CPR Cable EuroClass Fire Performance | Dca |
| EN50575 CPR Cable EuroClass Smoke Rating | s2 |
| EN50575 CPR Cable EuroClass Droplets Rating | d2 |
| EN50575 CPR Cable EuroClass Acidity Rating | a1 |
| Environmental Note | Low Smoke Zero Halogen (LSZH) |
| Environmental Space | Indoor Low Smoke Zero Halogen (LSZH) |
| Flame Test Method | IEC 60332-3-22 |
| Smoke Test Method | IEC 61034-2 |

Packaging and Weights

| | |
|----------------|--------------------------|
| Cable weight | 58.038 kg/km 39 lb/kft |
| Packaging Type | Reel |

Regulatory Compliance/Certifications

| Agency | Classification |
|------------|---|
| CHINA-ROHS | Below maximum concentration value |
| REACH-SVHC | Compliant as per SVHC revision on www.commscope.com/ProductCompliance |
| ROHS | Compliant |
| UK-ROHS | Compliant |

