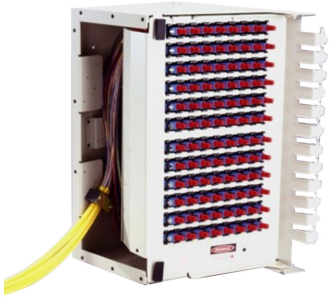


MX6-PMB7R1080



OMX Fiber Termination Block, pre-terminated with pigtails, 96 SC/UPC, singlemode, putty white, right oriented

Product Classification

Regional Availability	EMEA Latin America North America
Product Type	Fiber patch block
Product Brand	OMX600®
Product Series	OMX

General Specifications

Functionality	Patching
Application	Used in OMX-style frames only
Body Style	Right orientation
Color	Putty white
Color, front	Putty white
Growth Configuration	Fully loaded
Interface, front	SC/UPC
Rack Type	OMX
Shelf Movement	Hinged
Total Ports, quantity	96

Dimensions

Height	373.126 mm 14.69 in
Width	203.2 mm 8 in
Depth	283.21 mm 11.15 in

Material Specifications

Finish	Powder coated
---------------	---------------

MX6-PMB7R1080

Material Type Steel

Optical Specifications

Fiber Mode Singlemode

Packaging and Weights

Packaging quantity 1

Regulatory Compliance/Certifications

Agency	Classification
CHINA-ROHS	Above maximum concentration value
REACH-SVHC	Compliant as per SVHC revision on www.commscope.com/ProductCompliance
ROHS	Compliant/Exempted
UK-ROHS	Compliant

