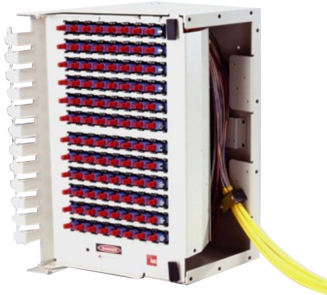


MX6-PMBLL4120-ESP



OMX Fiber Termination Block, pre-terminated with pigtails, 96 SC/APC, singlemode, putty white, left oriented

OBSOLETE

This product was discontinued on: December 30, 2018

Product Classification

Regional Availability	EMEA Latin America North America
Product Type	Fiber patch block
Product Brand	OMX600@
Product Series	OMX

General Specifications

Functionality	Patching
Application	Used in OMX-style frames only
Body Style	Left orientation
Color	Putty white
Color, front	Putty white
Growth Configuration	Fully loaded
Interface, front	SC/APC
Rack Type	OMX
Shelf Movement	Hinged
Total Ports, quantity	96

Dimensions

Height	373.126 mm 14.69 in
Width	203.2 mm 8 in

MX6-PMBLL4120-ESP

Depth 283.21 mm | 11.15 in

Material Specifications

Finish Powder coated

Material Type Steel

Optical Specifications

Fiber Mode Singlemode

Packaging and Weights

Packaging quantity 1

Regulatory Compliance/Certifications

Agency

Classification

CHINA-ROHS

Above maximum concentration value

REACH-SVHC

Compliant as per SVHC revision on www.commscope.com/ProductCompliance

ROHS

Compliant/Exempted

UK-ROHS

Compliant/Exempted

