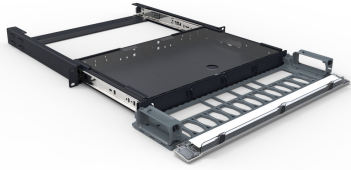


760193771 | 360G2-1U-MOD-SD



G2 1U Sliding Modular Cassette 4-slot Fiber Panel, unloaded

Product Classification

Regional Availability	Asia Australia/New Zealand EMEA
Regional Availability Note	Discontinued in North America and Latin America regions. Optional replacements are 760209940 HD-1U (patch application) or 760231506 HD-1U-SP (splice application)
Portfolio	CommScope®
Product Type	Fiber patch panel

General Specifications

Application	Accepts four G2 modular cassettes Accepts one InstaPATCH® 360 data module or 360DP panel Accepts two RoloSplices with three trays each
Color	Black
Interface, front	Unloaded
Rack Units	1
Shelf Movement	Sliding
Total Ports, quantity	0

Dimensions

Height	44.45 mm 1.75 in
Width	482.6 mm 19 in
Depth	457.2 mm 18 in

Material Specifications

Finish	Powder coated
Material Type	Steel

Packaging and Weights

Weight, net	5.443 kg 12 lb
--------------------	------------------

Regulatory Compliance/Certifications

Agency	Classification
CHINA-ROHS	Below maximum concentration value
ISO 9001:2015	Designed, manufactured and/or distributed under this quality management system
REACH-SVHC	Compliant as per SVHC revision on www.commscope.com/ProductCompliance
ROHS	Compliant
UK-ROHS	Compliant

