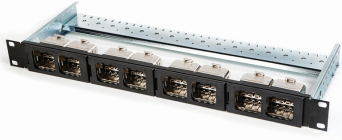


2153112-3



AMP CO Ultra Quick-Fit Modular Patch Panel Kit, shielded, unloaded, 8 port, 1 RU, black

OBSOLETE

This product was discontinued on: December 29, 2023

Product Classification

Regional Availability	EMEA
Portfolio	NETCONNECT®
Product Type	RJ45 patch panel
Product Brand	AMP CO™
Product Series	AMP CO

General Specifications

Application	For use with ACO communication inserts
Cable Type	Shielded
Color	Black
Growth Configuration	Unloaded
Panel Mounting	Flush
Panel Style	Straight
Rack Type	EIA 19 in
Rack Units	1
Termination Type	IDC
Total Ports, quantity	8

Dimensions

Height	44.45 mm 1.75 in
Width	482.6 mm 19 in

Material Specifications

2153112-3

Material Type High-impact, flame retardant, thermoplastic | Steel

Packaging and Weights

Packaging quantity 1

Packaging Type Bag | Box

Regulatory Compliance/Certifications

Agency	Classification
CHINA-ROHS	Below maximum concentration value
REACH-SVHC	Compliant as per SVHC revision on www.commscope.com/ProductCompliance
ROHS	Compliant
UK-ROHS	Compliant

