



FOSC® 400 A4 Fiber Optic Splice Closure, Heat Shrink Cable sealing, two pre-installed 24-splice trays, ground feedthrough lugs, with test valve

- Single-ended, O-ring sealed dome closure for splicing feeder and distribution cables
- Compatible with most common cable types: e.g. loose tube, central core, ribbon fiber
- FOSC splice trays hinged for access to any splice without disturbing other trays
- Closure can be used in aerial, pedestal and underground (up to 5 meters) environments
- Compatible with CommScope's CWDM modules and optical splitter trays

## Product Classification

|                              |                                   |
|------------------------------|-----------------------------------|
| <b>Regional Availability</b> | Asia   EMEA                       |
| <b>Product Type</b>          | Single-ended, round fiber closure |
| <b>Product Brand</b>         | FOSC®                             |
| <b>Product Series</b>        | FOSC 400                          |

## General Specifications

|   |  |
|---|--|
| <b>Cable Blocking Components</b>                            | None                                   |
| <b>Cable Entry Drop Port Style</b>                          | Round                                  |
| <b>Cable Entry Main Port Style</b>                          | Oval                                   |
| <b>Cable Ports Quantity, total</b>                          | 1 oval port (2 cables) + 4 round ports |
| <b>Cable Sealing Type</b>                                   | Heat shrink                            |
| <b>Closure Sealing Type</b>                                 | Dome-to-base clamp with O-ring         |
| <b>Closure Style</b>  | Single-ended                           |
| <b>Color</b>  | Black                                  |
| <b>Flash Test Valve</b>                                     | Pre-installed                          |
| <b>Ground Feed-through</b>                                  | Included                               |
| <b>Mounting</b>   | Pole   Strand   Wall                   |
| <b>Network Area Type</b>                                    | Feeder                                 |
| <b>Splice Tray Included, quantity</b>                       | 2                                      |
| <b>Splice Tray Type Included</b>                            | 24-way, heat shrink                    |
| <b>Splicing Capacity, Single Fusion, maximum</b>            | 48                                     |
| <b>Splicing Capacity, Single Splice, 12 fibers, maximum</b> | 48                                     |
| <b>Splicing Capacity, Single Splice, 6 fibers, maximum</b>  | 24                                     |

# 942364-000 | FOSC-400A4-S24-2-NGV

**Splicing Type, Supported**

Single fusion

## Dimensions

**Length**

420 mm | 16.535 in

**Diameter**

150 mm | 5.906 in

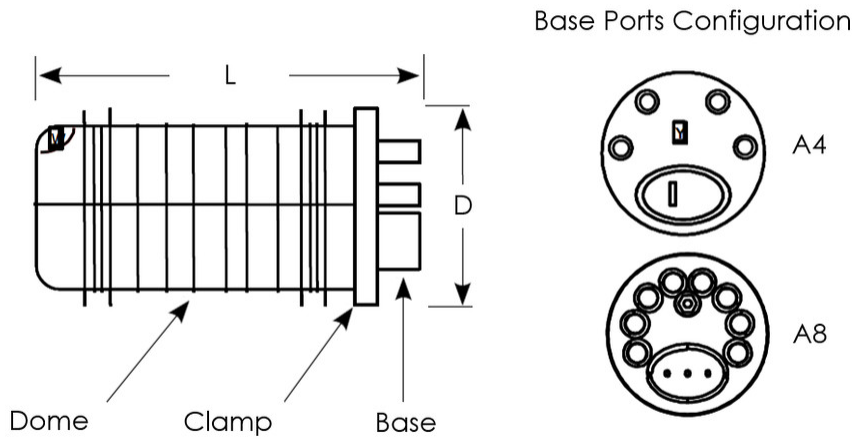
**Diameter, with clamp**

180 mm | 7.087 in

**Main Cable Diameter, maximum**

25 mm | 0.984 in

## Dimension Drawing



## Ordering Tree

# 942364-000 | FOSC-400A4-S24-2-NGV

FOSC - 400 X - X - X - X X X

**Closure size**

|      |                                     |
|------|-------------------------------------|
| A4   | 420mm - 4 round ports               |
| B4   | 540mm - 4 round ports               |
| D5   | 710mm - 5 round ports               |
| A8   | 410mm - 8 round ports <sup>1)</sup> |
| A5   | 420mm - 4 round ports               |
| B2   | 540mm - 2 round ports               |
| D5/B | 505mm - 5 round ports               |

**Tray type**

|  |  |    |    |              |    |
|--|--|----|----|--------------|----|
| NT   | No Trays   |    |    |              |    |
| <i>Splices in splice protectors at tray exterior</i> |  |    |    |              |    |
|  |  | A4 | AB | B2, B4, D5/B | D5 |
| S12  | 12 SMOUV splice protectors (45mm)  |    |    | X            |    |
| S24  | 24 SMOUV splice protectors (45mm)  | X  | X  | X            |    |
| A24  | 24 ANT splice protectors   | X  | X  | X            |    |
| 4R4  | 4 splice protectors for ribbon cable with 4 fibers                       | X  | X  |              |    |
| 6R4  | 6 splice protectors for ribbon cable with 4 fibers                       |    |    | X            |    |
| <i>Splices stored in modules at tray interior</i>    |  |    |    |              |    |
|  |  | A4 | AB | B2, B4, D5/B | D5 |
| 12   | 12 splice protectors (2 modules, 6 splices/module)                       | X  | X  | X            |    |
| 24   | 24 splice protectors (2 modules, 12 splices/module)                      | X  | X  | X            |    |
| 36   | 36 splice protectors (6 modules, 6 splices/module)                       |    |    |              | X  |
| S96  | 96 SMOUV splice protectors (45mm)  |    |    |              | X  |
| L96  | 96 SMOUV splice protectors (60 mm)                                       |    |    |              | X  |
| A96  | 96 ANT splice protectors   |    |    |              | X  |
| RT24   | 24 splices for ribbon cable with 12 fibers (4 modules, 6 splices/module) |    |    |              | X  |

**Flash test valve**

|   |                                |
|---|--------------------------------|
| V | Pre-installed flash test valve |
| N | No flash test valve            |

**Ground feedthrough**

|   |                                  |
|---|----------------------------------|
| G | Pre-installed ground feedthrough |
| N | No ground feedthrough            |

**Moisture cable blocking**

|   |             |
|---|-------------|
| N | No blocking |
| B | Blocking    |

**Number of splice trays**

|                     |                    |
|---------------------|--------------------|
| 0                   | No trays           |
| <i>Closure size</i> |                    |
| 1...3               | A4                 |
| 1...4/8             | A8 <sup>1)</sup>   |
| 1...6               | B <sup>1)</sup>    |
| 1...12              | D5/B <sup>1)</sup> |
| 1...8               | D5 <sup>1)</sup>   |

<sup>1)</sup> AB closure can accept a mix of standard and slim trays; please contact your local sales representative.

<sup>1)</sup> Maximum 8 trays in case of S6 or A6 tray type

<sup>1)</sup> B closure can initially be fitted with trays; however, retrofitting a standard "B" closure (delivered with 4 trays or fewer) with a 5th and 6th tray is not possible. The B closure can be ordered with up to 5 trays pre-installed and capacity for later addition of a 6th tray (FOSC-400B4XX/6...).

<sup>1)</sup> If 5 or 6 trays are required, a storage basket cannot be used.

<sup>1)</sup> If 7 or 8 trays are required, a storage basket cannot be used.

## Material Specifications

**Material Type**

Impact-resistant polymer

## Environmental Specifications

**Environmental Space**

Below ground | Buried

**Qualification Standards**

IEC 61300, 6 m waterhead

**Water Resistance**

Flash test valve at 5 psi (40 kPa)

## Packaging and Weights

**Packaging quantity**

1

**Packaging Type**

Box | Carton

**Weight, net**

1.9 kg | 4.189 lb

### Regulatory Compliance/Certifications

| <b>Agency</b> | <b>Classification</b>  |
|---------------|--|
| CHINA-ROHS    | Below maximum concentration value  |
| ISO 9001:2015 | Designed, manufactured and/or distributed under this quality management system   |
| REACH-SVHC    | Compliant as per SVHC revision on <a href="http://www.commscope.com/ProductCompliance">www.commscope.com/ProductCompliance</a> |
| ROHS          | Compliant  |
| UK-ROHS       | Compliant  |

