

# A62395-000 | FOSC-400A8-NT-0-NNN



FOSC® 400 A8 Fiber Optic Splice Closure, Heat Shrink Cable sealing, no pre-installed trays

- Single-ended, O-ring sealed dome closure for splicing feeder and distribution cables
- Compatible with most common cable types: e.g. loose tube, central core, ribbon fiber
- FOSC splice trays hinged for access to any splice without disturbing other trays
- Closure can be used in aerial, pedestal and underground (up to 5 meters) environments
- Compatible with CommScope's CWDM modules and optical splitter trays

## Product Classification

<b>Regional Availability</b>	Asia   EMEA
<b>Product Type</b>	Single-ended, round fiber closure
<b>Product Brand</b>	FOSC®
<b>Product Series</b>	FOSC 400

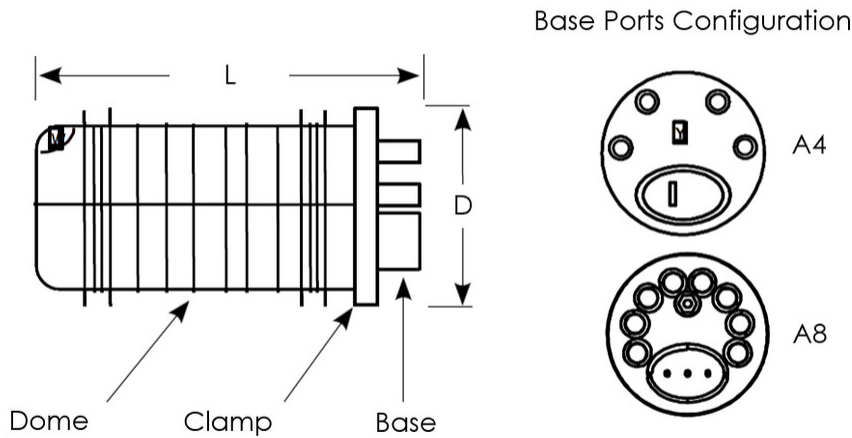
## General Specifications

<b>Cable Blocking Components</b>	None
<b>Cable Entry Drop Port Style</b>	Round
<b>Cable Entry Main Port Style</b>	Oval
<b>Cable Ports Quantity, total</b>	1 oval port (2 cables) + 8 round ports
<b>Cable Sealing Type</b>	Heat shrink
<b>Closure Sealing Type</b>	Dome-to-base clamp with O-ring
<b>Closure Style</b>	Single-ended
<b>Color</b>	Black
<b>Flash Test Valve</b>	None
<b>Ground Feed-through</b>	None
<b>Mounting</b>	Pole   Strand   Wall
<b>Network Area Type</b>	Feeder
<b>Splice Tray Included, quantity</b>	0
<b>Splice Tray Type Included</b>	No trays
<b>Splicing Capacity, Mass Fusion, maximum</b>	144
<b>Splicing Capacity, Single Fusion, maximum</b>	96
<b>Splicing Capacity, Single Splice, 12 fibers, maximum</b>	96

# A62395-000 | FOSC-400A8-NT-0-NNN

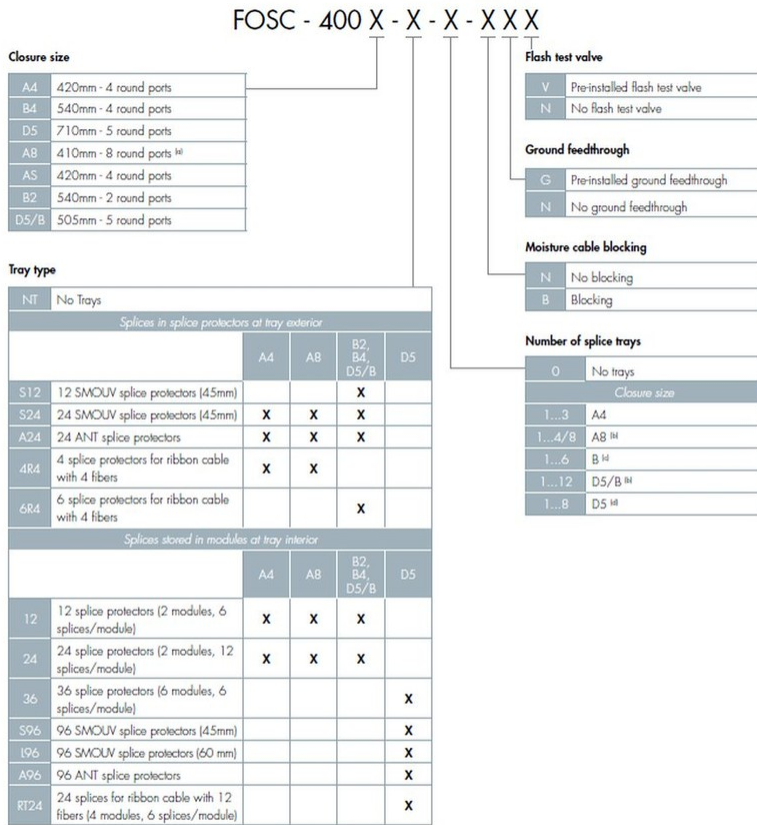
<b>Splicing Capacity, Single Splice, 6 fibers, maximum</b>	48
<b>Splicing Type, Supported</b>	Single fusion
<b>Dimensions</b>	
<b>Length</b>	420 mm   16.535 in
<b>Diameter</b>	150 mm   5.906 in
<b>Diameter, with clamp</b>	180 mm   7.087 in
<b>Main Cable Diameter, maximum</b>	25 mm   0.984 in

## Dimension Drawing



## Ordering Tree

# A62395-000 | FOSC-400A8-NT-0-NNN



<sup>1H</sup> AB closure can accept a mix of standard and slim trays; please contact your local sales representative.  
<sup>1H</sup> Maximum 8 trays in case of S6 or A6 tray type  
<sup>1H</sup> B closure can initially be fitted with trays; however, retrofitting a standard "B" closure (delivered with 4 trays or fewer) with a 5th and 6th tray is not possible. The B closure can be ordered with up to 5 trays pre-installed and capacity for later addition of a 6th tray (FOSC-400B4XXX/6...). If 5 or 6 trays are required, a storage basket cannot be used.  
<sup>1H</sup> If 7 or 8 trays are required, a storage basket cannot be used.

## Material Specifications

**Material Type**

Impact-resistant polymer

## Environmental Specifications

**Environmental Space**

Below ground | Buried

**Qualification Standards**

IEC 61300, 6 m waterhead

## Packaging and Weights

**Packaging quantity**

1

**Packaging Type**

Box | Carton

**Weight, net**

2.4 kg | 5.291 lb

## Regulatory Compliance/Certifications

<b>Agency</b>	<b>Classification</b>
CHINA-ROHS	Below maximum concentration value
ISO 9001:2015	Designed, manufactured and/or distributed under this quality management system
REACH-SVHC	Compliant as per SVHC revision on <a href="http://www.commscope.com/ProductCompliance">www.commscope.com/ProductCompliance</a>
ROHS	Compliant
UK-ROHS	Compliant

