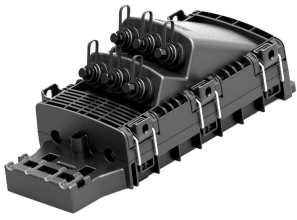


OTE200-06MH-NN-S12-B-W



Mini-OTE 200-Series, Optical Terminal Enclosure, 6-port full-size connector, no splitter, black, wall mount

- Optical Terminal Enclosures incorporate hardened connector technology that is designed to withstand the rugged outside plant environment
- Functionality to splice and store feeder cable in the field with the possibility to splice in the field two extra branch cables
- Hardened adapters are factory-terminated and environmentally sealed to ensure rapid plug-and-play drop cable installations
- Integrated external cable fixation guarantees easy, fast and reliable cable manipulations

Product Classification

Regional Availability	Asia Australia/New Zealand EMEA Latin America
Product Type	Access terminal, without splitter/tap
Product Series	Mini-OTE 200

General Specifications

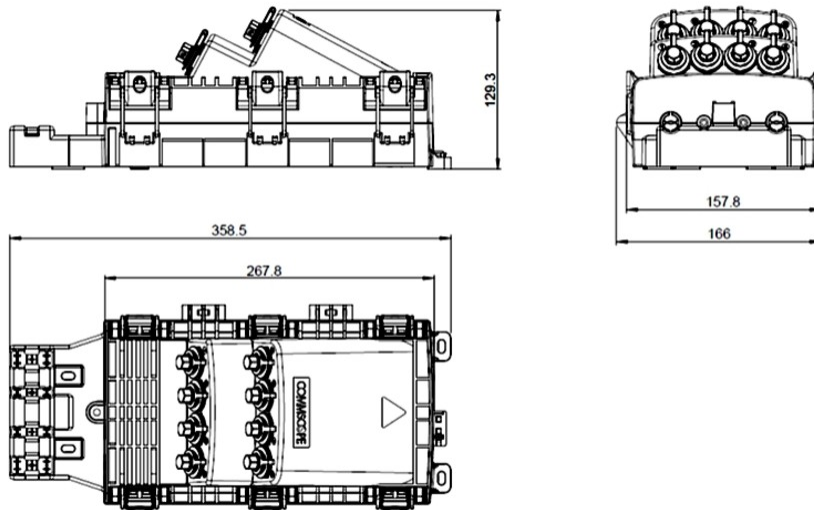
Cable, quantity	0
Distribution Type	6 ports
Enclosure Color	Black
Mounting	Handhole Pole Wall
Port Type	Hardened full-size SC/APC
Port, quantity	6
Splitter, quantity	0
Stub Type	No tail

Dimensions

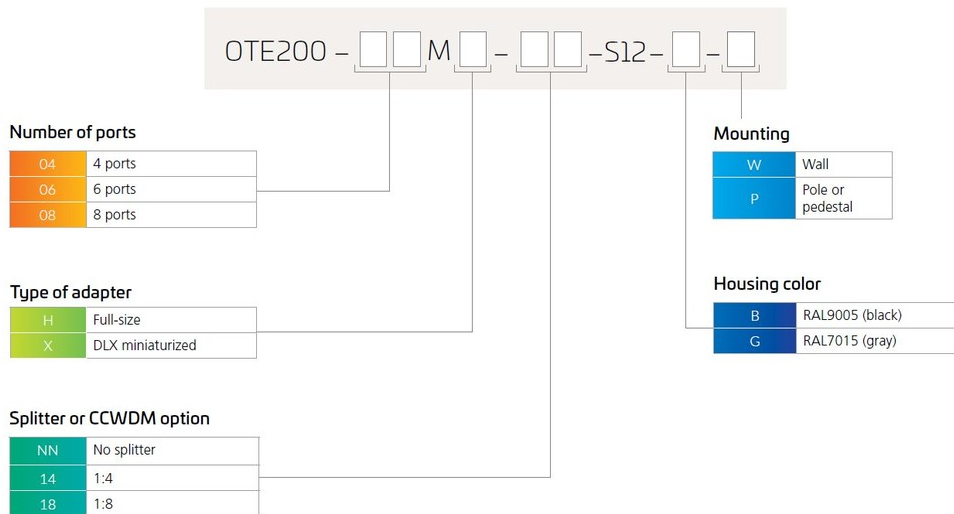
Height	358.5 mm 14.114 in
Width	166 mm 6.535 in
Depth	129.3 mm 5.091 in

Dimension Drawing

OTE200-06MH-NN-S12-B-W



Ordering Tree



Material Specifications

Enclosure Material Type

Glass filled polypropylene (GF-PP)

Optical Specifications

Fiber Type

G.652.D

Wavelength Range

1260–1635 nm

Insertion Loss, Terminal Connector, maximum

0.4 dB

OTE200-06MH-NN-S12-B-W

Insertion Loss, Terminal Connector, typical	0.16 dB
Return Loss, Connector, minimum	65 dB

Environmental Specifications

Operating Temperature	-40 °C to +65 °C (-40 °F to +149 °F)
Relative Humidity	5%–100%, condensing
Environmental Space	Above ground Below ground Buried
Qualification Standards	IEC 60529, IP68 + 3 m waterhead
UV Resistance	UV stabilized

Packaging and Weights

Included	Cable termination unit (2) Enclosure (1) Fiber pigtail cassette (1) Splice Cassette (2)
Packaging quantity	1
Packaging Type	Box Carton

Regulatory Compliance/Certifications

Agency	Classification
ISO 9001:2015	Designed, manufactured and/or distributed under this quality management system



Included Products

CW8094-002 – TENIO™ Cable Termination Unit kit
TENIO-CTU-L(10)