

CBNRD | IP6A-12RUTP-1100L-1100E

Base Product



InstaPATCH® Cu GigaSPEED X10D® U/UTP Riser Preterminated Copper Cable, 1100 module to 360 1100 Evolve module, 12 links

Product Classification

| | |
|------------------------------|---------------------------------------------------------------------|
| Regional Availability | Asia Australia/New Zealand EMEA Latin America North America |
| Portfolio | CommScope® |
| Product Type | Copper trunk cable assembly |
| Product Brand | GigaSPEED X10D® InstaPATCH® Cu |

General Specifications

| | |
|---------------------------------------|------------------------|
| ANSI/TIA Category | 6A |
| Cable Type | U/UTP (unshielded) |
| Conductor Type | Solid |
| Interface, Connector A | 1100 module |
| Interface Feature, connector A | Standard |
| Interface, Connector B | 360 1100 Evolve module |
| Interface Feature, connector B | Standard |
| Link Count | 12 |
| Wiring | T568B |

Dimensions

| | |
|-----------------------------------------|----------|
| Cable Assembly Length Range (m) | 5 – 90 |
| Cable Assembly Length Range (ft) | 17 – 295 |

Electrical Specifications

| | |
|-------------------------------|---------|
| dc Resistance, maximum | 0.3 ohm |
| Safety Voltage Rating | 300 V |

Ordering Tree

CBNRD | IP6A-12RUTP-1100L-1100E

| | | | | | | | | | | | | | | | |
|---|---|---|---|---|---|---|---|---|----|----|----|---|---|---|---|
| 1 | 2 | 3 | 4 | 5 | 6 | 7 | 8 | 9 | 10 | 11 | 12 | | | | |
| C | A | A | A | C | - | 1 | 1 | H | A | B | B | F | 0 | 5 | 0 |

| Cable Type | |
|------------|-------------------------------------|
| A | Cat 6A X10D – U/UTP (Plenum) |
| B | Cat 6A X10D – U/UTP (Riser) |
| C | Cat 6A X10D – U/UTP (LSZH) |
| D | Cat 6A X10D – F/UTP (Plenum) |
| E | Cat 6A X10D – F/UTP (Riser) |
| F | Cat 6A X10D – F/UTP (LSZH) |
| G | Cat 6 XL – U/UTP (Plenum) |
| H | Cat 6 XL – U/UTP (Riser) |
| J | Cat 6 XL – U/UTP (LSZH) |
| Q | Cat 6A X10D – S/FTP (LSZH) |
| R | Cat 6 – U/UTP Class B Rated (LSZH) |
| S | Cat 6A – U/UTP Class B Rated (LSZH) |
| Y | Cat 6A X10D SD – U/UTP (Riser) |

| Connector B | |
|-------------|------------------------------------------|
| A | Outlet* – Single Row Standard Density |
| B | Outlet* – Dual Row Standard Density |
| C | Outlet* – Dual Row High Density |
| G | RJ45 Plug* – Single Row Standard Density |
| H | RJ45 Plug* – Dual Row Standard Density |
| J | RJ45 Plug* – Dual Row High Density |
| N | 1100 Module |
| R | 360 1100 Evolve Module |
| S | OneLink 2x6 |
| T | OneLink 2x4 |

| Orientation A | |
|---------------|-----------------------|
| 1 | Trident Series Flat |
| 2 | Right Paired Flat |
| 3 | Right Series Flat |
| 4 | Left Paired Flat |
| 5 | Left Series Flat |
| 6 | Trident Paired Flat |
| A | Trident Series Angled |
| B | Right Paired Angled |
| C | Right Series Angled |
| D | Left Paired Angled |
| E | Left Series Angled |
| F | Trident Paired Angled |

| Orientation B | |
|---------------|-----------------------|
| 1 | Trident Series Flat |
| 2 | Right Paired Flat |
| 3 | Right Series Flat |
| 4 | Left Paired Flat |
| 5 | Left Series Flat |
| 6 | Trident Paired Flat |
| A | Trident Series Angled |
| B | Right Paired Angled |
| C | Right Series Angled |
| D | Left Paired Angled |
| E | Left Series Angled |
| F | Trident Paired Angled |
| X | Not Applicable |

| Link | |
|------|----|
| B | 6 |
| C | 8 |
| D | 12 |
| E | 16 |
| F | 18 |
| G | 24 |

| Outlet Color | |
|--------------|----------------|
| 0 | Not Applicable |
| 1 | Black (BK) |
| 2 | Blue (BL) |
| B | White (WH) |

| UOM | |
|-----|-------|
| F | Foot |
| M | Meter |

| Length | |
|--------|-----|
| 12 | XXX |

| Connector A | |
|-------------|------------------------------------------|
| A | Outlet* – Single Row Standard Density |
| B | Outlet* – Dual Row Standard Density |
| C | Outlet* – Dual Row High Density |
| G | RJ45 Plug* – Single Row Standard Density |
| H | RJ45 Plug* – Dual Row Standard Density |
| J | RJ45 Plug* – Dual Row High Density |
| N | 1100 Module |
| R | 360 1100 Evolve Module |
| S | OneLink 2x6 |
| T | OneLink 2x4 |
| X | Unterminated |

| Bundling | |
|----------|-------------|
| H | Hook-n-loop |
| S | Sleaving |

| Jacket Color | |
|--------------|------------|
| B | White (WH) |
| C | Slate (SL) |
| Z | Blue (BL) |

| Labeling | |
|----------|---------------|
| A | Generic Label |

- Cords > 1m are authorized for use in channels and are an effective standalone method used to connect active devices
- Cords < 1m are also valid elements for use in a channel or as an equipment interconnect, but due to their limited length are not guaranteed to meet component compliance requirements that were developed to assess the quality of longer cords

Environmental Specifications

| | |
|------------------------------|--------------------------------------|
| Operating Temperature | -10 °C to +60 °C (+14 °F to +140 °F) |
| Environmental Space | Riser |
| Flammability Rating | UL 94 V-0 |

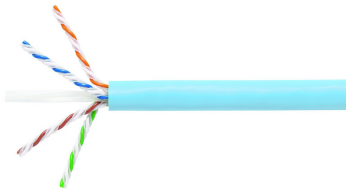
Regulatory Compliance/Certifications

| | |
|---------------|--------------------------------------------------------------------------------|
| Agency | Classification |
| ISO 9001:2015 | Designed, manufactured and/or distributed under this quality management system |

Included Products

| | | |
|----------------------|---|--------------------------------------------------------------------------------------------|
| 1091B-4/23 | – | GigaSPEED X10D® 1091B ETL Verified Category 6A U/UTP Cable, 4 pair count |
| 760151183 | – | SYSTIMAX 360™ GigaSPEED X10D® 1100GS6 Evolve Category 6A U/UTP Distribution Module, 6 port |
| 360-IPR-1100-GS6-DM6 | | |

1091B-4/23



GigaSPEED X10D® 1091B ETL Verified Category 6A U/UTP Cable, 4 pair count

Product Classification

| | |
|------------------------------|---------------------------------------------------------------------|
| Regional Availability | Asia Australia/New Zealand EMEA Latin America North America |
| Portfolio | SYSTIMAX® |
| Product Type | Twisted pair cable |
| Product Brand | GigaSPEED X10D® |

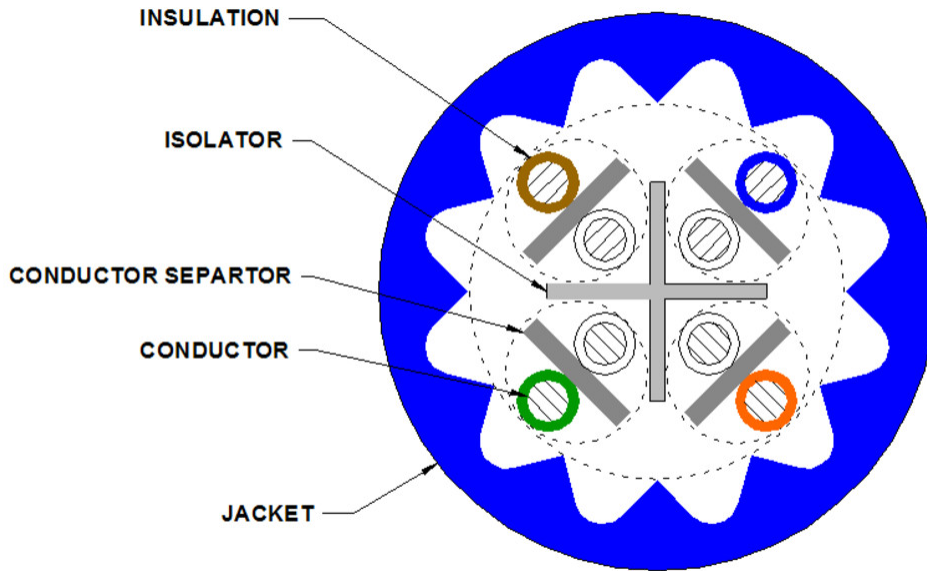
General Specifications

| | |
|--------------------------------|-------------------------------------------|
| Product Number | 1091B |
| ANSI/TIA Category | 6A |
| Cable Component Type | Horizontal |
| Cable Type | U/UTP (unshielded) |
| Conductor Type, singles | Solid |
| Conductors, quantity | 8 |
| Pairs, quantity | 4 |
| Separator Type | Isolator |
| Transmission Standards | ANSI/TIA-568.2-D ISO/IEC 11801 Class EA |

Dimensions

| | |
|--------------------------------------|---------------------|
| Diameter Over Jacket, nominal | 7.239 mm 0.285 in |
| Jacket Thickness | 1.295 mm 0.051 in |
| Conductor Gauge, singles | 23 AWG |

Cross Section Drawing



Electrical Specifications

| | |
|----------------------------------------------|-------------------------------------------------------------------------------------------------------------------------------------------------------------------------------------------------------------------------------|
| Characteristic Impedance | 100 ohm |
| Characteristic Impedance Tolerance | ±15 ohm |
| dc Resistance Unbalance, maximum | 4 % |
| dc Resistance, maximum | 7.61 ohms/100 m 2.32 ohms/100 ft |
| Dielectric Strength, minimum | 1500 Vac 2500 Vdc |
| Mutual Capacitance at Frequency | 6.0 nF/100 m @ 1 kHz |
| Nominal Velocity of Propagation (NVP) | 65 % |
| Operating Frequency, maximum | 550 MHz |
| Operating Voltage, maximum | 80 V |
| Remote Powering | Fully complies with the recommendations set forth by IEEE 802.3bt (Type 4) for the safe delivery of power over LAN cable when installed according to ISO/IEC 14763-2, CENELEC EN 50174-1, CENELEC EN 50174-2 or TIA TSB-184-A |

Material Specifications

| | |
|-----------------------------|-------------|
| Conductor Material | Bare copper |
| Insulation Material | Polyolefin |
| Jacket Material | PVC |
| Separator Material | Polyolefin |
| Separator 2 Material | Polyolefin |

1091B-4/23

Mechanical Specifications

Pulling Tension, maximum 11.34 kg | 25 lb

Environmental Specifications

Installation temperature 0 °C to +60 °C (+32 °F to +140 °F)

Operating Temperature -20 °C to +60 °C (-4 °F to +140 °F)

Environmental Space Non-plenum

Temperature Rating, UL 75 °C | 167 °F

Flame Test Method CMR

Packaging and Weights

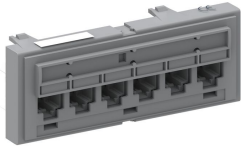
Cable weight 55.509 kg/km | 37.3 lb/kft

Regulatory Compliance/Certifications

| Agency | Classification |
|---------------|--------------------------------------------------------------------------------|
| ISO 9001:2015 | Designed, manufactured and/or distributed under this quality management system |

760151183 | 360-IPR-1100-GS6-DM6

SYSTIMAX 360™ GigaSPEED X10D® 1100GS6 Evolve Category 6A U/UTP Distribution Module, 6 port



Product Classification

Regional Availability

Asia | Australia/New Zealand | EMEA | Latin America | North America

Portfolio

SYSTIMAX®

Product Type

Module

Product Brand

GigaSPEED X10D® | SYSTIMAX 360™

General Specifications

ANSI/TIA Category

6A

Cable Type

Unshielded

Color

Cool gray

Conductor Type

Solid | Stranded

Intelligence Type

iPatch® ready

Modules, quantity

1

Rack Type

EIA 19 in

Rack Units

1

Termination Type

IDC

Total Ports, quantity

6

Wiring

T568A | T568B

Dimensions

Height

43.688 mm | 1.72 in

Width

482.6 mm | 19 in

Depth

28.702 mm | 1.13 in

Compatible Diameter Over Dielectric, maximum

1.168 mm | 0.046 in

760151183 | 360-IPR-1100-GS6-DM6

| | |
|-----------------------------------------------------|--------------------|
| Compatible Diameter Over Dielectric, minimum | 0.762 mm 0.03 in |
| Compatible Conductor Gauge, solid | 22 AWG 24 AWG |
| Compatible Conductor Gauge, stranded | 22 AWG 24 AWG |

Electrical Specifications

| | |
|--------------------------------------------------------------|-------------------------------|
| Current Rating at Temperature | 1.5 A @ 20 °C 1.5 A @ 68 °F |
| Dielectric Withstand Voltage, RMS, conductive surface | 1,500 Vac @ 60 Hz |
| Dielectric Withstand Voltage, RMS, contact-to-contact | 1,000 Vac @ 60 Hz |
| Insulation Resistance, minimum | 500 MOhm |

Material Specifications

| | |
|------------------------------------|-------------------------------------------------------------------|
| Contact Plating Material | Precious metals |
| Material Type | High-impact, flame retardant, thermoplastic Powder-coated steel |
| Termination Contact Plating | Nickel |

Mechanical Specifications

| | |
|---------------------------------------|----------------------------|
| Plug Insertion Life, minimum | 750 times |
| Plug Insertion Life, test plug | IEC 60603-7 compliant plug |
| Plug Retention Force, minimum | 133.447 N 30 lbf |

Environmental Specifications

| | |
|------------------------------|--------------------------------------|
| Operating Temperature | -10 °C to +60 °C (+14 °F to +140 °F) |
| Storage Temperature | -40 °C to +70 °C (-40 °F to +158 °F) |
| Relative Humidity | Up to 95%, non-condensing |
| Flammability Rating | UL 94 V-0 |
| Safety Standard | UL cUL |

Packaging and Weights

| | |
|---------------------------|--------------------|
| Packaging quantity | 1 |
| Weight, net | 0.073 kg 0.16 lb |

Regulatory Compliance/Certifications

| Agency | Classification |
|---------------|-----------------------------------|
| CHINA-ROHS | Below maximum concentration value |

760151183 | 360-IPR-1100-GS6-DM6

ISO 9001:2015

Designed, manufactured and/or distributed under this quality management system

REACH-SVHC

Compliant as per SVHC revision on www.commscope.com/ProductCompliance

ROHS

Compliant

UK-ROHS

Compliant

