

CRRXG | IPO6-24BUTP-1100E-BLUNT

Base Product



InstaPATCH® Cu GigaSPEED XL® U/UTP LSZH Class B2ca
Preterminated Copper Cable, 360 1100 Evolve module to unterminated,
24 links

Product Classification

Regional Availability	EMEA
Portfolio	CommScope®
Product Type	Copper trunk cable assembly
Product Brand	GigaSPEED XL® InstaPATCH® Cu
Ordering Note	Available cable jacket colors: blue, white

General Specifications

ANSI/TIA Category	6
Cable Type	U/UTP (unshielded)
Conductor Type	Solid
Interface, Connector A	360 1100 Evolve module
Interface Feature, connector A	Standard
Interface, Connector B	Unterminated
Link Count	24
Wiring	T568B

Dimensions

Cable Assembly Length Range (m)	2 – 90
Cable Assembly Length Range (ft)	7 – 295

Electrical Specifications

dc Resistance, maximum	0.3 ohm
Safety Voltage Rating	300 V

Ordering Tree

CRRXG | IPO6-24BUTP-1100E-BLUNT

1 2 3 4 5 6 7 8 9 10 11 12																																																																																																					
C A A A C - 1 1 H A B B F 0 5 0																																																																																																					
Cable Type	Connector B	Orientation A	Orientation B																																																																																																		
<table border="1"> <tr><td>A</td><td>Cat 6A X10D – U/UTP (Plenum)</td></tr> <tr><td>B</td><td>Cat 6A X10D – U/UTP (Riser)</td></tr> <tr><td>C</td><td>Cat 6A X10D – U/UTP (LSZH)</td></tr> <tr><td>D</td><td>Cat 6A X10D – F/UTP (Plenum)</td></tr> <tr><td>E</td><td>Cat 6A X10D – F/UTP (Riser)</td></tr> <tr><td>F</td><td>Cat 6A X10D – F/UTP (LSZH)</td></tr> <tr><td>G</td><td>Cat 6 XL – U/UTP (Plenum)</td></tr> <tr><td>H</td><td>Cat 6 XL – U/UTP (Riser)</td></tr> <tr><td>J</td><td>Cat 6 XL – U/UTP (LSZH)</td></tr> <tr><td>Q</td><td>Cat 6A X10D – S/FTP (LSZH)</td></tr> <tr><td>R</td><td>Cat 6 – U/UTP Class B Rated (LSZH)</td></tr> <tr><td>S</td><td>Cat 6A – U/UTP Class B Rated (LSZH)</td></tr> <tr><td>Y</td><td>Cat 6A X10D SD – U/UTP (Riser)</td></tr> </table>	A	Cat 6A X10D – U/UTP (Plenum)	B	Cat 6A X10D – U/UTP (Riser)	C	Cat 6A X10D – U/UTP (LSZH)	D	Cat 6A X10D – F/UTP (Plenum)	E	Cat 6A X10D – F/UTP (Riser)	F	Cat 6A X10D – F/UTP (LSZH)	G	Cat 6 XL – U/UTP (Plenum)	H	Cat 6 XL – U/UTP (Riser)	J	Cat 6 XL – U/UTP (LSZH)	Q	Cat 6A X10D – S/FTP (LSZH)	R	Cat 6 – U/UTP Class B Rated (LSZH)	S	Cat 6A – U/UTP Class B Rated (LSZH)	Y	Cat 6A X10D SD – U/UTP (Riser)	<table border="1"> <tr><td>A</td><td>Outlet* – Single Row Standard Density</td></tr> <tr><td>B</td><td>Outlet* – Dual Row Standard Density</td></tr> <tr><td>C</td><td>Outlet* – Dual Row High Density</td></tr> <tr><td>G</td><td>RJ45 Plug* – Single Row Standard Density</td></tr> <tr><td>H</td><td>RJ45 Plug* – Dual Row Standard Density</td></tr> <tr><td>J</td><td>RJ45 Plug* – Dual Row High Density</td></tr> <tr><td>N</td><td>1100 Module</td></tr> <tr><td>R</td><td>360 1100 Evolve Module</td></tr> <tr><td>S</td><td>OneLink 2x6</td></tr> <tr><td>T</td><td>OneLink 2x4</td></tr> </table>	A	Outlet* – Single Row Standard Density	B	Outlet* – Dual Row Standard Density	C	Outlet* – Dual Row High Density	G	RJ45 Plug* – Single Row Standard Density	H	RJ45 Plug* – Dual Row Standard Density	J	RJ45 Plug* – Dual Row High Density	N	1100 Module	R	360 1100 Evolve Module	S	OneLink 2x6	T	OneLink 2x4	<table border="1"> <tr><td>1</td><td>Trident Series Flat</td></tr> <tr><td>2</td><td>Right Paired Flat</td></tr> <tr><td>3</td><td>Right Series Flat</td></tr> <tr><td>4</td><td>Left Paired Flat</td></tr> <tr><td>5</td><td>Left Series Flat</td></tr> <tr><td>6</td><td>Trident Paired Flat</td></tr> <tr><td>A</td><td>Trident Series Angled</td></tr> <tr><td>B</td><td>Right Paired Angled</td></tr> <tr><td>C</td><td>Right Series Angled</td></tr> <tr><td>D</td><td>Left Paired Angled</td></tr> <tr><td>E</td><td>Left Series Angled</td></tr> <tr><td>F</td><td>Trident Paired Angled</td></tr> <tr><td>X</td><td>Not Applicable</td></tr> </table>	1	Trident Series Flat	2	Right Paired Flat	3	Right Series Flat	4	Left Paired Flat	5	Left Series Flat	6	Trident Paired Flat	A	Trident Series Angled	B	Right Paired Angled	C	Right Series Angled	D	Left Paired Angled	E	Left Series Angled	F	Trident Paired Angled	X	Not Applicable	<table border="1"> <tr><td>1</td><td>Trident Series Flat</td></tr> <tr><td>2</td><td>Right Paired Flat</td></tr> <tr><td>3</td><td>Right Series Flat</td></tr> <tr><td>4</td><td>Left Paired Flat</td></tr> <tr><td>5</td><td>Left Series Flat</td></tr> <tr><td>6</td><td>Trident Paired Flat</td></tr> <tr><td>A</td><td>Trident Series Angled</td></tr> <tr><td>B</td><td>Right Paired Angled</td></tr> <tr><td>C</td><td>Right Series Angled</td></tr> <tr><td>D</td><td>Left Paired Angled</td></tr> <tr><td>E</td><td>Left Series Angled</td></tr> <tr><td>F</td><td>Trident Paired Angled</td></tr> <tr><td>X</td><td>Not Applicable</td></tr> </table>	1	Trident Series Flat	2	Right Paired Flat	3	Right Series Flat	4	Left Paired Flat	5	Left Series Flat	6	Trident Paired Flat	A	Trident Series Angled	B	Right Paired Angled	C	Right Series Angled	D	Left Paired Angled	E	Left Series Angled	F	Trident Paired Angled	X	Not Applicable
A	Cat 6A X10D – U/UTP (Plenum)																																																																																																				
B	Cat 6A X10D – U/UTP (Riser)																																																																																																				
C	Cat 6A X10D – U/UTP (LSZH)																																																																																																				
D	Cat 6A X10D – F/UTP (Plenum)																																																																																																				
E	Cat 6A X10D – F/UTP (Riser)																																																																																																				
F	Cat 6A X10D – F/UTP (LSZH)																																																																																																				
G	Cat 6 XL – U/UTP (Plenum)																																																																																																				
H	Cat 6 XL – U/UTP (Riser)																																																																																																				
J	Cat 6 XL – U/UTP (LSZH)																																																																																																				
Q	Cat 6A X10D – S/FTP (LSZH)																																																																																																				
R	Cat 6 – U/UTP Class B Rated (LSZH)																																																																																																				
S	Cat 6A – U/UTP Class B Rated (LSZH)																																																																																																				
Y	Cat 6A X10D SD – U/UTP (Riser)																																																																																																				
A	Outlet* – Single Row Standard Density																																																																																																				
B	Outlet* – Dual Row Standard Density																																																																																																				
C	Outlet* – Dual Row High Density																																																																																																				
G	RJ45 Plug* – Single Row Standard Density																																																																																																				
H	RJ45 Plug* – Dual Row Standard Density																																																																																																				
J	RJ45 Plug* – Dual Row High Density																																																																																																				
N	1100 Module																																																																																																				
R	360 1100 Evolve Module																																																																																																				
S	OneLink 2x6																																																																																																				
T	OneLink 2x4																																																																																																				
1	Trident Series Flat																																																																																																				
2	Right Paired Flat																																																																																																				
3	Right Series Flat																																																																																																				
4	Left Paired Flat																																																																																																				
5	Left Series Flat																																																																																																				
6	Trident Paired Flat																																																																																																				
A	Trident Series Angled																																																																																																				
B	Right Paired Angled																																																																																																				
C	Right Series Angled																																																																																																				
D	Left Paired Angled																																																																																																				
E	Left Series Angled																																																																																																				
F	Trident Paired Angled																																																																																																				
X	Not Applicable																																																																																																				
1	Trident Series Flat																																																																																																				
2	Right Paired Flat																																																																																																				
3	Right Series Flat																																																																																																				
4	Left Paired Flat																																																																																																				
5	Left Series Flat																																																																																																				
6	Trident Paired Flat																																																																																																				
A	Trident Series Angled																																																																																																				
B	Right Paired Angled																																																																																																				
C	Right Series Angled																																																																																																				
D	Left Paired Angled																																																																																																				
E	Left Series Angled																																																																																																				
F	Trident Paired Angled																																																																																																				
X	Not Applicable																																																																																																				
Connector A	Link	Outlet Color	UOM																																																																																																		
<table border="1"> <tr><td>A</td><td>Outlet* – Single Row Standard Density</td></tr> <tr><td>B</td><td>Outlet* – Dual Row Standard Density</td></tr> <tr><td>C</td><td>Outlet* – Dual Row High Density</td></tr> <tr><td>H</td><td>RJ45 Plug* – Single Row Standard Density</td></tr> <tr><td>J</td><td>RJ45 Plug* – Dual Row High Density</td></tr> <tr><td>N</td><td>1100 Module</td></tr> <tr><td>R</td><td>360 1100 Evolve Module</td></tr> <tr><td>S</td><td>OneLink 2x6</td></tr> <tr><td>T</td><td>OneLink 2x4</td></tr> <tr><td>X</td><td>Unterminated</td></tr> </table>	A	Outlet* – Single Row Standard Density	B	Outlet* – Dual Row Standard Density	C	Outlet* – Dual Row High Density	H	RJ45 Plug* – Single Row Standard Density	J	RJ45 Plug* – Dual Row High Density	N	1100 Module	R	360 1100 Evolve Module	S	OneLink 2x6	T	OneLink 2x4	X	Unterminated	<table border="1"> <tr><td>B</td><td>6</td></tr> <tr><td>C</td><td>8</td></tr> <tr><td>D</td><td>12</td></tr> <tr><td>E</td><td>16</td></tr> <tr><td>F</td><td>18</td></tr> <tr><td>G</td><td>24</td></tr> </table>	B	6	C	8	D	12	E	16	F	18	G	24	<table border="1"> <tr><td>0</td><td>Not Applicable</td></tr> <tr><td>1</td><td>Black (BK)</td></tr> <tr><td>2</td><td>Blue (BL)</td></tr> <tr><td>B</td><td>White (WH)</td></tr> </table>	0	Not Applicable	1	Black (BK)	2	Blue (BL)	B	White (WH)	<table border="1"> <tr><td>11</td><td>F</td><td>Foot</td></tr> <tr><td></td><td>M</td><td>Meter</td></tr> </table>	11	F	Foot		M	Meter																																																				
A	Outlet* – Single Row Standard Density																																																																																																				
B	Outlet* – Dual Row Standard Density																																																																																																				
C	Outlet* – Dual Row High Density																																																																																																				
H	RJ45 Plug* – Single Row Standard Density																																																																																																				
J	RJ45 Plug* – Dual Row High Density																																																																																																				
N	1100 Module																																																																																																				
R	360 1100 Evolve Module																																																																																																				
S	OneLink 2x6																																																																																																				
T	OneLink 2x4																																																																																																				
X	Unterminated																																																																																																				
B	6																																																																																																				
C	8																																																																																																				
D	12																																																																																																				
E	16																																																																																																				
F	18																																																																																																				
G	24																																																																																																				
0	Not Applicable																																																																																																				
1	Black (BK)																																																																																																				
2	Blue (BL)																																																																																																				
B	White (WH)																																																																																																				
11	F	Foot																																																																																																			
	M	Meter																																																																																																			
Length	Bundling	Jacket Color																																																																																																			
<table border="1"> <tr><td>12</td><td>XXX</td></tr> </table>	12	XXX	<table border="1"> <tr><td>7</td><td>H</td><td>Hook-n-loop</td></tr> <tr><td></td><td>S</td><td>Sleaving</td></tr> </table>	7	H	Hook-n-loop		S	Sleaving	<table border="1"> <tr><td>10</td><td>B</td><td>White (WH)</td></tr> <tr><td></td><td>C</td><td>Slate (SL)</td></tr> <tr><td></td><td>Z</td><td>Blue (BL)</td></tr> </table>	10	B	White (WH)		C	Slate (SL)		Z	Blue (BL)																																																																																		
12	XXX																																																																																																				
7	H	Hook-n-loop																																																																																																			
	S	Sleaving																																																																																																			
10	B	White (WH)																																																																																																			
	C	Slate (SL)																																																																																																			
	Z	Blue (BL)																																																																																																			
	Labeling																																																																																																				
	<table border="1"> <tr><td>8</td><td>A</td><td>Generic Label</td></tr> </table>	8	A	Generic Label																																																																																																	
8	A	Generic Label																																																																																																			

- Cords > 1m are authorized for use in channels and are an effective standalone method used to connect active devices
- Cords < 1m are also valid elements for use in a channel or as an equipment interconnect, but due to their limited length are not guaranteed to meet component compliance requirements that were developed to assess the quality of longer cords

Environmental Specifications

Operating Temperature	-20 °C to +60 °C (-4 °F to +140 °F)
EN50575 CPR Cable EuroClass Fire Performance	B2ca
EN50575 CPR Cable EuroClass Smoke Rating	s1
EN50575 CPR Cable EuroClass Droplets Rating	d0
EN50575 CPR Cable EuroClass Acidity Rating	a1
Environmental Space	Low Smoke Zero Halogen (LSZH)
Flammability Rating	UL 94 V-0

Regulatory Compliance/Certifications

Agency	Classification
CENELEC	EN 50575 compliant, Declaration of Performance (DoP) available
CHINA-ROHS	Below maximum concentration value
ISO 9001:2015	Designed, manufactured and/or distributed under this quality management system
REACH-SVHC	Compliant as per SVHC revision on www.commscope.com/ProductCompliance
ROHS	Compliant
UK-ROHS	Compliant



Included Products

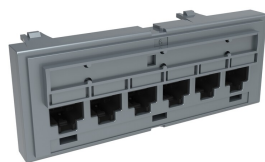
CRRXG | IPO6-24BUTP-1100E-BLUNT

760151167
360-IPR-1100-GS3-DM6

- SYSTIMAX 360™ GigaSPEED XL® 1100GS3 Evolve Category 6 U/UTP Distribution Module, 6 port

760241923
3071E-B WHT C6 4/23 U/UTP
W1000

- GigaSPEED XL® 3071E-B ETL Verified Category 6 U/UTP Cable, low smoke zero halogen, white jacket, 4 pair count, 1000 ft (305 m) length, WE TOTE® box



SYSTIMAX 360™ GigaSPEED XL® 1100GS3 Evolve Category 6 U/UTP Distribution Module, 6 port

Product Classification

Regional Availability

Asia | Australia/New Zealand | EMEA | Latin America | North America

Portfolio

SYSTIMAX®

Product Type

Module

Product Brand

GigaSPEED XL®

General Specifications

ANSI/TIA Category

6

Cable Type

Unshielded

Color

Cool gray

Conductor Type

Solid | Stranded

Intelligence Type

iPatch® ready

Modules, quantity

1

Rack Type

EIA 19 in

Rack Units

1

Termination Type

IDC

Total Ports, quantity

6

Wiring

T568A | T568B

Dimensions

Height

43.688 mm | 1.72 in

Width

106.68 mm | 4.2 in

Depth

27.432 mm | 1.08 in

Compatible Diameter Over Dielectric, maximum

1.168 mm | 0.046 in

Compatible Diameter Over Dielectric, minimum

0.762 mm | 0.03 in

Compatible Conductor Gauge, solid

22 AWG | 24 AWG

760151167 | 360-IPR-1100-GS3-DM6

Compatible Conductor Gauge, stranded

22 AWG | 24 AWG

Electrical Specifications

Current Rating at Temperature

1.5 A @ 20 °C | 1.5 A @ 68 °F

Dielectric Withstand Voltage, RMS, conductive surface

1,500 Vac @ 60 Hz

Dielectric Withstand Voltage, RMS, contact-to-contact

1,000 Vac @ 60 Hz

Insulation Resistance, minimum

500 MOhm

Material Specifications

Contact Plating Material

Precious metals

Material Type

High-impact, flame retardant, thermoplastic | Powder-coated steel

Termination Contact Plating

Nickel

Mechanical Specifications

Plug Insertion Life, minimum

750 times

Plug Insertion Life, test plug

IEC 60603-7 compliant plug

Plug Retention Force, minimum

133.447 N | 30 lbf

Environmental Specifications

Operating Temperature

-10 °C to +60 °C (+14 °F to +140 °F)

Storage Temperature

-40 °C to +70 °C (-40 °F to +158 °F)

Relative Humidity

Up to 95%, non-condensing

Flammability Rating

UL 94 V-0

Safety Standard

UL | cUL

Packaging and Weights

Packaging quantity

1

Weight, net

0.068 kg | 0.15 lb

Regulatory Compliance/Certifications

Agency

Classification

CHINA-ROHS

Below maximum concentration value

ISO 9001:2015

Designed, manufactured and/or distributed under this quality management system

REACH-SVHC

Compliant as per SVHC revision on www.commscope.com/ProductCompliance

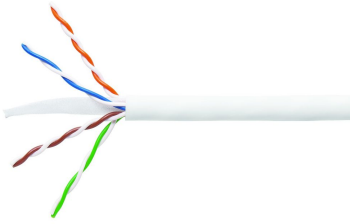
ROHS

Compliant

UK-ROHS

Compliant





GigaSPEED XL® 3071E-B ETL Verified Category 6 U/UTP Cable, low smoke zero halogen, white jacket, 4 pair count, 1000 ft (305 m) length, WE TOTE® box

Product Classification

Regional Availability	EMEA
Portfolio	SYSTIMAX®
Product Type	Twisted pair cable
Product Brand	GigaSPEED XL®

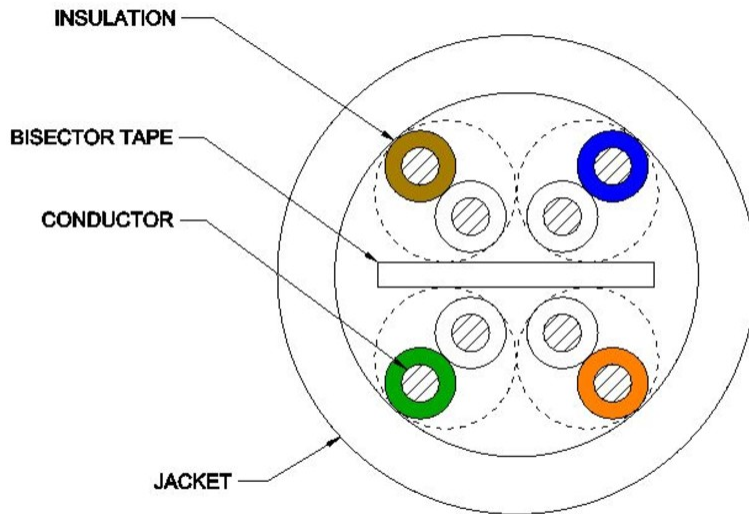
General Specifications

Product Number	3071E
ANSI/TIA Category	6
Cable Component Type	Horizontal
Cable Type	U/UTP (unshielded)
Conductor Type, singles	Solid
Conductors, quantity	8
Jacket Color	White
Pairs, quantity	4
Separator Type	Bisector
Transmission Standards	ANSI/TIA-568.2-D CENELEC EN 50288-6-1 ISO/IEC 11801 Class E

Dimensions

Cable Length	304.8 m 1000 ft
Diameter Over Insulated Conductor	1.041 mm 0.041 in
Diameter Over Jacket, nominal	5.918 mm 0.233 in
Jacket Thickness	0.559 mm 0.022 in
Conductor Gauge, singles	23 AWG

Cross Section Drawing



Electrical Specifications

dc Resistance Unbalance, maximum	5 %
dc Resistance, maximum	7.61 ohms/100 m 2.32 ohms/100 ft
Dielectric Strength, minimum	2500 Vdc
Mutual Capacitance at Frequency	5.6 nF/100 m @ 1 kHz
Nominal Velocity of Propagation (NVP)	70 %
Operating Frequency, maximum	300 MHz
Operating Voltage, maximum	80 V
Remote Powering	Fully complies with the recommendations set forth by IEEE 802.3bt (Type 4) for the safe delivery of power over LAN cable when installed according to ISO/IEC 14763-2, CENELEC EN 50174-1, CENELEC EN 50174-2 or TIA TSB-184-A
Segregation Class	c

Material Specifications

Conductor Material	Bare copper
Insulation Material	Polyolefin
Jacket Material	Low Smoke Zero Halogen (LSZH)
Separator Material	Polyolefin

760241923 | 3071E-B WHT C6 4/23 U/UTP W1000

Mechanical Specifications

Pulling Tension, maximum 11.34 kg | 25 lb

Environmental Specifications

Installation temperature 0 °C to +60 °C (+32 °F to +140 °F)

Operating Temperature -20 °C to +60 °C (-4 °F to +140 °F)

Acid Gas Test Method EN 50267-2-3

EN50575 CPR Cable EuroClass Fire Performance B2ca

EN50575 CPR Cable EuroClass Smoke Rating s1a

EN50575 CPR Cable EuroClass Droplets Rating d0

EN50575 CPR Cable EuroClass Acidity Rating a1

Environmental Space Low Smoke Zero Halogen (LSZH)

Smoke Test Method IEC 61034-2

Packaging and Weights

Cable weight 38.097 kg/km | 25.6 lb/kft

Packaging Type WE TOTE® box

Regulatory Compliance/Certifications

Agency	Classification
CENELEC	EN 50575 compliant, Declaration of Performance (DoP) available
CHINA-ROHS	Below maximum concentration value
ISO 9001:2015	Designed, manufactured and/or distributed under this quality management system
REACH-SVHC	Compliant as per SVHC revision on www.commscope.com/ProductCompliance
ROHS	Compliant
UK-ROHS	Compliant

