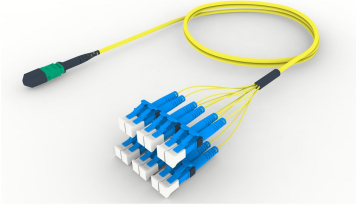


FLWMXLCAD

Base Product



Singlemode MPO (Pinned) to LC/UPC, InstaPATCH® 360 Ruggedized Fanout Cable, 12-Fiber, Plenum

Product Classification

| | |
|------------------------------|--|
| Regional Availability | Asia Australia/New Zealand China Europe India Latin America Middle East/Africa North America |
| Portfolio | CommScope® |
| Product Type | Ruggedized fanout |
| Product Brand | SYSTIMAX InstaPATCH® 360 |
| Ordering Note | For lengths greater than 999 ft (304 m), orders must be in meters Minimum length may vary based on cable configuration |

General Specifications

| | |
|-------------------------------------|-----------------|
| Color, boot A | Black |
| Color, connector A | Green |
| Color, boot B | Blue |
| Color, connector B | Blue |
| Construction Type | Stranded |
| Furcation Color | Yellow |
| Interface, Connector A | MPO-12/APC Male |
| Interface, Connector B | LC/UPC |
| Jacket Color | Yellow |
| Polarity | Method B (LL) |
| Fibers per Subunit, quantity | 12 |
| Total Fibers, quantity | 12 |

Dimensions

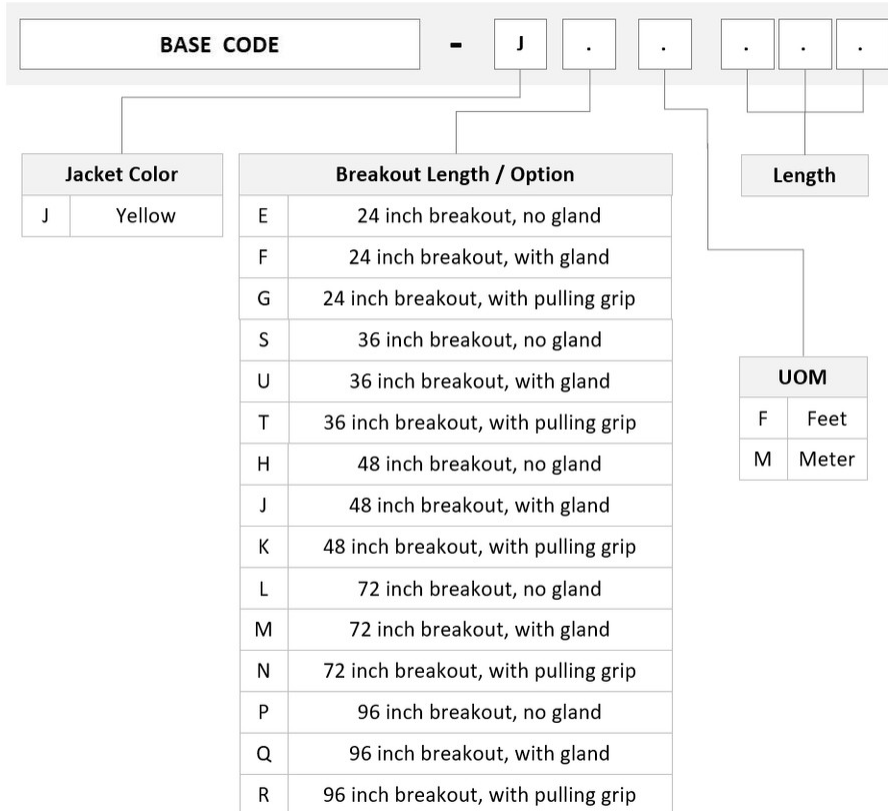
| | |
|--|---------|
| Cable Assembly Length Range (m) | 3 – 999 |
|--|---------|

FLWMXLCAD

Cable Assembly Length Range (ft)

7 – 999

Ordering Tree



Mechanical Specifications

Cable Retention Strength, maximum 11.24 lb @ 0° | 4.40 lb @ 90°

Optical Specifications

Fiber Mode Singlemode

Fiber Type G.652.D | G.657.A1, TeraSPEED®

Environmental Specifications

Operating Temperature -10 °C to +60 °C (+14 °F to +140 °F)

Environmental Space Indoor | Plenum

Regulatory Compliance/Certifications

FLWMXLCAD

Agency

ANATEL

CHINA-ROHS

ISO 9001:2015

REACH-SVHC

ROHS

UK-ROHS



Classification

Compliant

Below maximum concentration value

Designed, manufactured and/or distributed under this quality management system

Compliant as per SVHC revision on www.commscope.com/ProductCompliance

Compliant

Compliant

Included Products

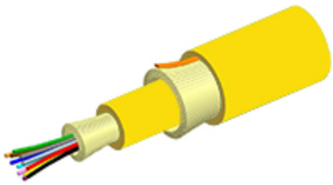
760038307

P-012-MP-8W-F12YL

860366178

860637435

- Fiber indoor cable, TeraSPEED® Plenum for MPO Trunks, 12 fiber, Singlemode G.652.D and G.657.A1, Feet jacket marking, Yellow jacket color
- MPO12, LOW LOSS, MALE, Singlemode, GREEN, 3mm
- LC/UPC Connector, Singlemode, Blue, Short Boot



Fiber indoor cable, TeraSPEED® Plenum for MPO Trunks, 12 fiber, Singlemode G.652.D and G.657.A1, Feet jacket marking, Yellow jacket color

Product Classification

| | |
|------------------------------|--|
| Regional Availability | Asia Australia/New Zealand Latin America Middle East /Africa North America |
| Portfolio | CommScope® |
| Product Type | Fiber indoor cable |
| Product Series | P-MP |

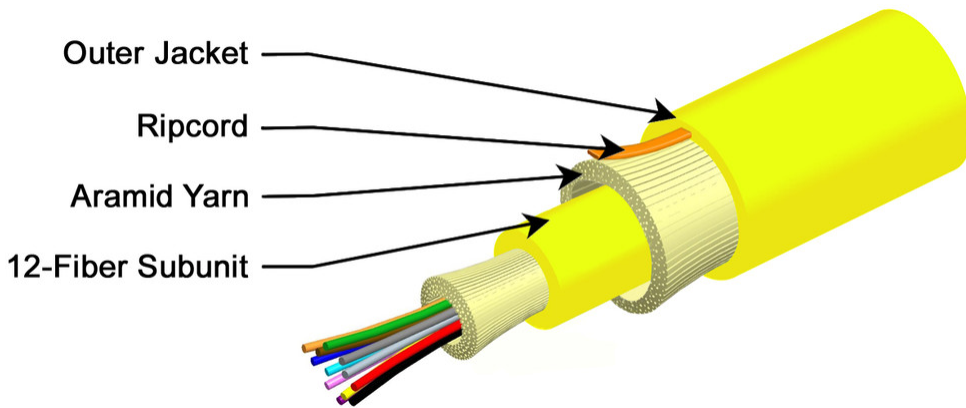
General Specifications

| | |
|--------------------------|-----------------|
| Cable Type | MPO trunk cable |
| Construction Type | Non-armored |
| Subunit Type | Gel-free |
| Jacket Color | Yellow |
| Jacket Marking | Feet |
| Total Fiber Count | 12 |

Dimensions

| | |
|-------------------------------------|-------------------|
| Buffer Tube/Subunit Diameter | 3 mm 0.118 in |
| Diameter Over Jacket | 4.9 mm 0.193 in |

Representative Image



Mechanical Specifications

| | |
|--|---------------------------------------|
| Minimum Bend Radius, loaded | 74 mm 2.913 in |
| Minimum Bend Radius, unloaded | 49 mm 1.929 in |
| Tensile Load, long term, maximum | 200 N 44.962 lbf |
| Tensile Load, short term, maximum | 667 N 149.948 lbf |
| Compression | 10 N/mm 57.101 lb/in |
| Compression Test Method | FOTP-41 IEC 60794-1 E3 |
| Flex | 300 cycles |
| Flex Test Method | FOTP-104 IEC 60794-1 E6 |
| Impact | 0.74 N-m 6.55 in lb |
| Impact Test Method | FOTP-25 IEC 60794-1 E4 |
| Strain | See long and short term tensile loads |
| Strain Test Method | FOTP-33 IEC 60794-1 E1 |
| Twist | 10 cycles |
| Twist Test Method | FOTP-85 IEC 60794-1 E7 |
| Vertical Rise, maximum | 500 m 1,640.42 ft |

Optical Specifications

| | |
|-------------------|--|
| Fiber Type | G.652.D and G.657.A1, TeraSPEED® OS2 OS2 |
|-------------------|--|

Environmental Specifications

| | |
|---------------------------------|------------------------------------|
| Installation temperature | 0 °C to +70 °C (+32 °F to +158 °F) |
| Operating Temperature | 0 °C to +70 °C (+32 °F to +158 °F) |

760038307 | P-012-MP-8W-F12YL

| | |
|--------------------------------------|---------------------------------------|
| Storage Temperature | -40 °C to +70 °C (-40 °F to +158 °F) |
| Cable Qualification Standards | ANSI/ICEA S-83-596 Telcordia GR-409 |
| Environmental Space | Plenum |
| Flame Test Listing | NEC OFNP (ETL) and c(ETL) |
| Flame Test Method | NFPA 130 NFPA 262 |

Environmental Test Specifications

| | |
|--------------------------------------|------------------------------------|
| Heat Age | 0 °C to +85 °C (+32 °F to +185 °F) |
| Heat Age Test Method | IEC 60794-1 F9 |
| Low High Bend | 0 °C to +70 °C (+32 °F to +158 °F) |
| Low High Bend Test Method | FOTP-37 IEC 60794-1 E11 |
| Temperature Cycle | 0 °C to +70 °C (+32 °F to +158 °F) |
| Temperature Cycle Test Method | FOTP-3 IEC 60794-1 F1 |

Packaging and Weights

| | |
|---------------------|--------------------------|
| Cable weight | 23 kg/km 15.455 lb/kft |
|---------------------|--------------------------|

Regulatory Compliance/Certifications

| Agency | Classification |
|---------------|--|
| CHINA-ROHS | Below maximum concentration value |
| ISO 9001:2015 | Designed, manufactured and/or distributed under this quality management system |
| REACH-SVHC | Compliant as per SVHC revision on www.commscope.com/ProductCompliance |
| ROHS | Compliant |
| UK-ROHS | Compliant |



* Footnotes

Operating Temperature Specification applicable to non-terminated bulk fiber cable

860366178



MPO12, LOW LOSS, MALE, Singlemode, GREEN, 3mm

Product Classification

| | |
|------------------------------|---|
| Regional Availability | Asia Australia/New Zealand EMEA Latin America North America |
| Portfolio | CommScope® |
| Product Type | Fiber connector |
| Product Brand | TeraSPEED® |

General Specifications

| | |
|--------------------------|--------------|
| Color | Green |
| Color, boot | Black |
| Ferrule Geometry | Angled |
| Interface | MPO/APC Male |
| Interface Feature | Pinned |
| Total Fiber Count | 12 |

Dimensions

| | |
|----------------------------------|--------------------|
| Length | 60.1 mm 2.366 in |
| Compatible Cable Diameter | 3 mm 0.118 in |

Material Specifications

| | |
|-------------------------|---------|
| Ferrule Material | Polymer |
|-------------------------|---------|

Mechanical Specifications

| | |
|--|----------------|
| Cable Retention Strength, maximum | 11.24 lb @ 0 ° |
|--|----------------|

Optical Specifications

| | |
|--------------------------------------|--|
| Fiber Mode | Singlemode |
| Fiber Type | G.652.D and G.657.A1, TeraSPEED® OS2 |
| Insertion Loss Change, mating | 0.3 dB |
| Optical Components Standard | ANSI/TIA-568-C.3 |

860366178

| | |
|---|---------|
| Insertion Loss Change, temperature | 0.3 dB |
| Insertion Loss, maximum | 0.67 dB |
| Return Loss, minimum | 55 dB |

Packaging and Weights

| | |
|---------------------------|---|
| Packaging quantity | 1 |
|---------------------------|---|

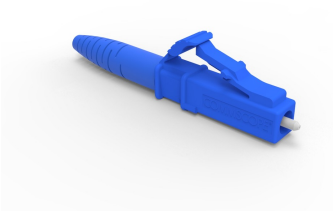
Regulatory Compliance/Certifications

| Agency | Classification |
|---------------|--|
| CHINA-ROHS | Above maximum concentration value |
| ISO 9001:2015 | Designed, manufactured and/or distributed under this quality management system |
| REACH-SVHC | Compliant as per SVHC revision on www.commscope.com/ProductCompliance |
| ROHS | Compliant/Exempted |
| UK-ROHS | Compliant |



* Footnotes

| | |
|---|---|
| Insertion Loss Change, mating | TIA-568: Maximum insertion loss change after 500 matings |
| Insertion Loss Change, temperature | Maximum insertion loss change from -10 °C to +60 °C (+14 °F to +140 °F) |



LC/UPC Connector, Singlemode, Blue, Short Boot

Product Classification

| | |
|------------------------------|---|
| Regional Availability | Asia Australia/New Zealand EMEA Latin America North America |
| Portfolio | CommScope® |
| Product Type | Fiber connector |

General Specifications

| | |
|-----------------------|--------|
| Color, boot | Blue |
| Color, housing | Blue |
| Interface | LC/UPC |

Dimensions

| | |
|---------------|--------------------|
| Length | 41.6 mm 1.638 in |
|---------------|--------------------|

Material Specifications

| | |
|-------------------------|----------|
| Ferrule Material | Zirconia |
|-------------------------|----------|

Mechanical Specifications

| | |
|--|----------------|
| Cable Retention Strength, maximum | 11.24 lb @ 0 ° |
|--|----------------|

Optical Specifications

| | |
|---|---------------------------------|
| Fiber Mode | Singlemode |
| Insertion Loss Change, mating | 0.2 dB |
| Optical Components Standard | ANSI/TIA-568. 3-D IEC 61753-1 |
| Insertion Loss Change, temperature | 0.3 dB |
| Insertion Loss, maximum | 0.25 dB |
| Return Loss, minimum | 55 dB |

Regulatory Compliance/Certifications

Agency

CHINA-ROHS

ROHS

UK-ROHS

**Classification**

Below maximum concentration value

Compliant

Compliant

*** Footnotes****Insertion Loss Change, mating** TIA-568: Maximum insertion loss change after 500 matings**Insertion Loss Change, temperature** Maximum insertion loss change from -10 °C to +60 °C (+14 °F to +140 °F)