

CSRRG | IP6A-24BUTP-1100E-1100E

Base Product



InstaPATCH® Cu GigaSPEED X10D® U/UTP LSZH Class B2ca
Preterminated Copper Cable, 360 1100 Evolve module to 360 1100
Evolve module, 24 links

Product Classification

Regional Availability	EMEA
Portfolio	CommScope®
Product Type	Copper trunk cable assembly
Product Brand	GigaSPEED XL® InstaPATCH® Cu
Ordering Note	Available cable jacket color: white

General Specifications

ANSI/TIA Category	6A
Cable Type	U/UTP (unshielded)
Conductor Type	Solid
Interface, Connector A	360 1100 Evolve module
Interface Feature, connector A	Standard
Interface, Connector B	360 1100 Evolve module
Interface Feature, connector B	Standard
Link Count	24
Wiring	T568B

Dimensions

Cable Assembly Length Range (m)	2 – 90
Cable Assembly Length Range (ft)	7 – 295

Electrical Specifications

dc Resistance, maximum	0.3 ohm
Safety Voltage Rating	300 V

Ordering Tree

CSRRG | IP6A-24BUTP-1100E-1100E

1 2 3 4 5 6 7 8 9 10 11 12
C A A A C - 1 1 H A B B F 0 5 0

Cable Type	Connector B	Orientation A	Orientation B
A Cat 6A X10D – U/UTP (Plenum)	A Outlet* – Single Row Standard Density	1 Trident Series Flat	1 Trident Series Flat
B Cat 6A X10D – U/UTP (Riser)	B Outlet* – Dual Row Standard Density	2 Right Paired Flat	2 Right Paired Flat
C Cat 6A X10D – U/UTP (LSZH)	C Outlet* – Dual Row High Density	3 Right Series Flat	3 Right Series Flat
D Cat 6A X10D – F/UTP (Plenum)	G RJ45 Plug* – Single Row Standard Density	4 Left Paired Flat	4 Left Paired Flat
E Cat 6A X10D – F/UTP (Riser)	H RJ45 Plug* – Dual Row Standard Density	5 Left Series Flat	5 Left Series Flat
F Cat 6A X10D – F/UTP (LSZH)	J RJ45 Plug* – Dual Row High Density	6 Trident Paired Flat	6 Trident Paired Flat
G Cat 6 XL – U/UTP (Plenum)	N 1100 Module	A Trident Series Angled	A Trident Series Angled
H Cat 6 XL – U/UTP (Riser)	R 360 1100 Evolve Module	B Right Paired Angled	B Right Paired Angled
I Cat 6 XL – U/UTP (LSZH)	S OneLink 2x6	C Right Series Angled	C Right Series Angled
J Cat 6A X10D – S/FTP (LSZH)	T OneLink 2x4	D Left Paired Angled	D Left Paired Angled
K Cat 6 – U/UTP Class B Rated (LSZH)		E Left Series Angled	E Left Series Angled
L Cat 6A – U/UTP Class B Rated (LSZH)		F Trident Paired Angled	F Trident Paired Angled
M Cat 6A X10D SD – U/UTP (Riser)		X Not Applicable	X Not Applicable

Connector A	Link	Outlet Color	UOM	Length
A Outlet* – Single Row Standard Density	B 6	0 Not Applicable	11 F Foot	12 XXX
B Outlet* – Dual Row Standard Density	C 8	1 Black (BK)	M Meter	
C Outlet* – Dual Row High Density	D 12	2 Blue (BL)		
G RJ45 Plug* – Single Row Standard Density	E 16	3 White (WH)		
H RJ45 Plug* – Dual Row Standard Density	F 18			
J RJ45 Plug* – Dual Row High Density	G 24			
N 1100 Module				
R 360 1100 Evolve Module				
S OneLink 2x6				
T OneLink 2x4				
X Unterminated				

Bundling	Jacket Color	Labeling
H Hook-n-loop	8 White (WH)	A Generic Label
S Sleaving	10 C Slate (SL)	
	Z Blue (BL)	

Environmental Specifications

Operating Temperature	-20 °C to +60 °C (-4 °F to +140 °F)
EN50575 CPR Cable EuroClass Fire Performance	B2ca
EN50575 CPR Cable EuroClass Smoke Rating	s1a
EN50575 CPR Cable EuroClass Droplets Rating	d0
EN50575 CPR Cable EuroClass Acidity Rating	a1
Environmental Space	Low Smoke Zero Halogen (LSZH)
Flammability Rating	UL 94 V-0

Regulatory Compliance/Certifications

Agency	Classification
CENELEC	EN 50575 compliant, Declaration of Performance (DoP) available
CHINA-ROHS	Below maximum concentration value
ISO 9001:2015	Designed, manufactured and/or distributed under this quality management system
REACH-SVHC	Compliant as per SVHC revision on www.commscope.com/ProductCompliance
ROHS	Compliant
UK-ROHS	Compliant



Included Products

CSRRG | IP6A-24BUTP-1100E-1100E

760151183
360-IPR-1100-GS6-DM6

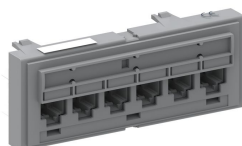
- SYSTIMAX 360™ GigaSPEED X10D® 1100GS6 Evolve Category 6A U/UTP Distribution Module, 6 port

760237884
3091B-B WHT 4/23 R1000

- GigaSPEED X10D® 3091B-B ETL Verified Category 6A U/UTP Cable, white jacket, 4 pair count, 1000 ft (305 m) length, reel

760151183 | 360-IPR-1100-GS6-DM6

SYSTIMAX 360™ GigaSPEED X10D® 1100GS6 Evolve Category 6A U/UTP Distribution Module, 6 port



Product Classification

Regional Availability

Asia | Australia/New Zealand | EMEA | Latin America | North America

Portfolio

SYSTIMAX®

Product Type

Module

Product Brand

GigaSPEED X10D® | SYSTIMAX 360™

General Specifications

ANSI/TIA Category

6A

Cable Type

Unshielded

Color

Cool gray

Conductor Type

Solid | Stranded

Intelligence Type

iPatch® ready

Modules, quantity

1

Rack Type

EIA 19 in

Rack Units

1

Termination Type

IDC

Total Ports, quantity

6

Wiring

T568A | T568B

Dimensions

Height

43.688 mm | 1.72 in

Width

482.6 mm | 19 in

Depth

28.702 mm | 1.13 in

Compatible Diameter Over Dielectric, maximum

1.168 mm | 0.046 in

760151183 | 360-IPR-1100-GS6-DM6

Compatible Diameter Over Dielectric, minimum	0.762 mm 0.03 in
Compatible Conductor Gauge, solid	22 AWG 24 AWG
Compatible Conductor Gauge, stranded	22 AWG 24 AWG

Electrical Specifications

Current Rating at Temperature	1.5 A @ 20 °C 1.5 A @ 68 °F
Dielectric Withstand Voltage, RMS, conductive surface	1,500 Vac @ 60 Hz
Dielectric Withstand Voltage, RMS, contact-to-contact	1,000 Vac @ 60 Hz
Insulation Resistance, minimum	500 MOhm

Material Specifications

Contact Plating Material	Precious metals
Material Type	High-impact, flame retardant, thermoplastic Powder-coated steel
Termination Contact Plating	Nickel

Mechanical Specifications

Plug Insertion Life, minimum	750 times
Plug Insertion Life, test plug	IEC 60603-7 compliant plug
Plug Retention Force, minimum	133.447 N 30 lbf

Environmental Specifications

Operating Temperature	-10 °C to +60 °C (+14 °F to +140 °F)
Storage Temperature	-40 °C to +70 °C (-40 °F to +158 °F)
Relative Humidity	Up to 95%, non-condensing
Flammability Rating	UL 94 V-0
Safety Standard	UL cUL

Packaging and Weights

Packaging quantity	1
Weight, net	0.073 kg 0.16 lb

Regulatory Compliance/Certifications

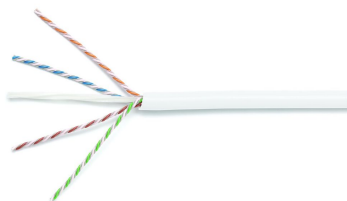
Agency	Classification
CHINA-ROHS	Below maximum concentration value

760151183 | 360-IPR-1100-GS6-DM6

ISO 9001:2015	Designed, manufactured and/or distributed under this quality management system
REACH-SVHC	Compliant as per SVHC revision on www.commscope.com/ProductCompliance
ROHS	Compliant
UK-ROHS	Compliant



760237884 | 3091B-B WHT 4/23 R1000



GigaSPEED X10D® 3091B-B ETL Verified Category 6A U/UTP Cable, white jacket, 4 pair count, 1000 ft (305 m) length, reel

Product Classification

Regional Availability	EMEA
Portfolio	SYSTIMAX®
Product Type	Twisted pair cable
Product Brand	GigaSPEED X10D®

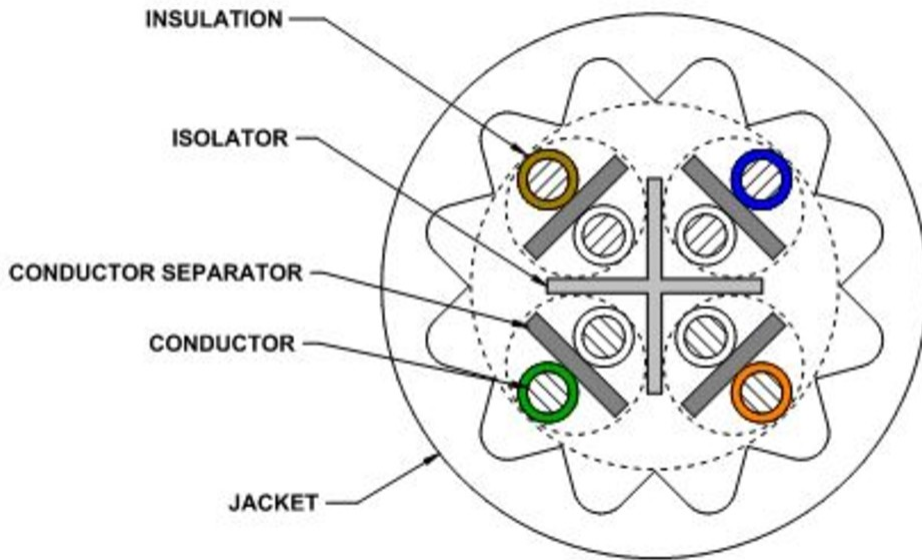
General Specifications

Product Number	3091B-B
ANSI/TIA Category	6A
Cable Component Type	Horizontal
Cable Type	U/UTP (unshielded)
Conductor Type, singles	Solid
Conductors, quantity	8
Jacket Color	White
Pairs, quantity	4
Separator Type	Isolator
Transmission Standards	ANSI/TIA-568.2-D ISO/IEC 11801 Class EA

Dimensions

Cable Length	304.8 m 1000 ft
Diameter Over Insulated Conductor	0.864 mm 0.034 in
Diameter Over Jacket, nominal	7.239 mm 0.285 in
Jacket Thickness	1.295 mm 0.051 in
Conductor Gauge, singles	23 AWG

Cross Section Drawing



Electrical Specifications

dc Resistance Unbalance, maximum	4 %
dc Resistance, maximum	7.61 ohms/100 m 2.32 ohms/100 ft
Dielectric Strength, minimum	2500 Vdc
Mutual Capacitance at Frequency	6.0 nF/100 m @ 1 kHz
Nominal Velocity of Propagation (NVP)	67 %
Operating Frequency, maximum	550 MHz
Operating Voltage, maximum	80 V
Remote Powering	Fully complies with the recommendations set forth by IEEE 802.3bt (Type 4) for the safe delivery of power over LAN cable when installed according to ISO/IEC 14763-2, CENELEC EN 50174-1, CENELEC EN 50174-2 or TIA TSB-184-A
Segregation Class	c

Material Specifications

Conductor Material	Bare copper
Insulation Material	Polyolefin
Jacket Material	Low Smoke Zero Halogen (LSZH)
Separator Material	Polyolefin

760237884 | 3091B-B WHT 4/23 R1000

Separator 2 Material Polyolefin

Mechanical Specifications

Pulling Tension, maximum 11.34 kg | 25 lb

Environmental Specifications

Installation temperature 0 °C to +60 °C (+32 °F to +140 °F)

Operating Temperature -20 °C to +60 °C (-4 °F to +140 °F)

Acid Gas Test Method EN 50267-2-3

EN50575 CPR Cable EuroClass Fire Performance B2ca

EN50575 CPR Cable EuroClass Smoke Rating s1a

EN50575 CPR Cable EuroClass Droplets Rating d0

EN50575 CPR Cable EuroClass Acidity Rating a1

Environmental Space Low Smoke Zero Halogen (LSZH)

Smoke Test Method IEC 61034-2

Packaging and Weights

Cable weight 55.955 kg/km | 37.6 lb/kft

Packaging Type Reel

Regulatory Compliance/Certifications

Agency	Classification
CENELEC	EN 50575 compliant, Declaration of Performance (DoP) available
CHINA-ROHS	Below maximum concentration value
ISO 9001:2015	Designed, manufactured and/or distributed under this quality management system
REACH-SVHC	Compliant as per SVHC revision on www.commscope.com/ProductCompliance
ROHS	Compliant
UK-ROHS	Compliant

