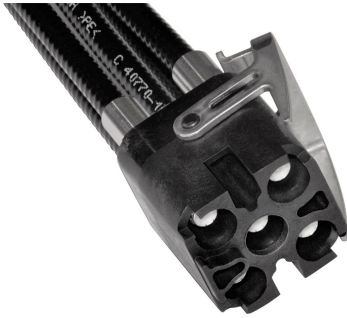


# MLOC-5-FIXM-HM-M3



HELIAX® M-LOC Multiport cluster 5 ports SureFlex® cable assembly with interface type M-LOC latching male to 4.3-10 male, size 1/4", length 0.3 meters

## Product Classification

|                       |                                      |
|-----------------------|--------------------------------------|
| <b>Product Type</b>   | Wireless transmission cable assembly |
| <b>Product Brand</b>  | HELIAX®                              |
| <b>Product Series</b> | M-LOC                                |

## General Specifications

|   |                  |
|---|------------------|
| <b>Attachment, Connector A</b>            | Factory attached |
| <b>Attachment, Connector B</b>            | Factory attached |
| <b>Body Style, Connector A</b>            | Straight         |
| <b>Body Style, Connector B</b>            | Straight         |
| <b>Interface, Connector A</b>             | M-LOC Male       |
| <b>Interface, Connector B</b>             | 4.3-10 Male      |
| <b>Specification Sheet Revision Level</b> | A                |

## Dimensions

|                     |                  |
|---------------------|------------------|
| <b>Length</b>       | 0.3 m   0.984 ft |
| <b>Nominal Size</b> | 1/4 in           |

## Electrical Specifications

|  |                                    |
|--|------------------------------------|
| <b>3rd Order IMD Dynamic</b>             | -119 dBm                           |
| <b>3rd Order IMD Dynamic Test Method</b> | Two +43 dBm carriers per IEC 62037 |

## VSWR/Return Loss

| Frequency Band | VSWR | Return Loss (dB) |
|----------------|------|------------------|
| 5.0–6.0 GHz    | 1.29 | 18               |
| 100–3000 MHz   | 1.07 | 30               |

# MLOC-5-FIXM-HM-M3

---

|                      |      |    |
|----------------------|------|----|
| <b>3000–4200 MHz</b> | 1.11 | 26 |
| <b>4200–5000 MHz</b> | 1.12 | 25 |

## Mechanical Specifications

|  |                |
|--|----------------|
| <b>Minimum Bend Radius, multiple Bends</b> | 25.4 mm   1 in |
| <b>Minimum Bend Radius, single Bend</b>    | 25.4 mm   1 in |

## Environmental Specifications

|                                 |   |
|---------------------------------|---|
| <b>Installation temperature</b> | -40 °C to +60 °C (-40 °F to +140 °F)          |
| <b>Operating Temperature</b>    | -55 °C to +85 °C (-67 °F to +185 °F)          |
| <b>Storage Temperature</b>      | -55 °C to +85 °C (-67 °F to +185 °F)          |
| <b>Immersion Test Method</b>    | Meets IEC 60529:2001, IP68 in mated condition |

## Regulatory Compliance/Certifications

| <b>Agency</b> | <b>Classification</b>  |
|---------------|--|
| CHINA-ROHS    | Below maximum concentration value  |
| ISO 9001:2015 | Designed, manufactured and/or distributed under this quality management system   |
| REACH-SVHC    | Compliant as per SVHC revision on <a href="http://www.commscope.com/ProductCompliance">www.commscope.com/ProductCompliance</a> |
| ROHS          | Compliant  |

