

HBXX-3319DS-VTM | HBXX-3319DS-A2M



4-port sector antenna, 4x 1710–2180 MHz, 33° HPBW, RET compatible

General Specifications

Antenna Type	Sector
Band	Single band
Color	Light Gray (RAL 7035)
Grounding Type	RF connector inner conductor and body grounded to reflector and mounting bracket
Performance Note	Outdoor usage
Radome Material	Fiberglass, UV resistant
Radiator Material	Low loss circuit board
RF Connector Interface	7-16 DIN Female
RF Connector Location	Bottom
RF Connector Quantity, high band	4
RF Connector Quantity, total	4

Remote Electrical Tilt (RET) Information

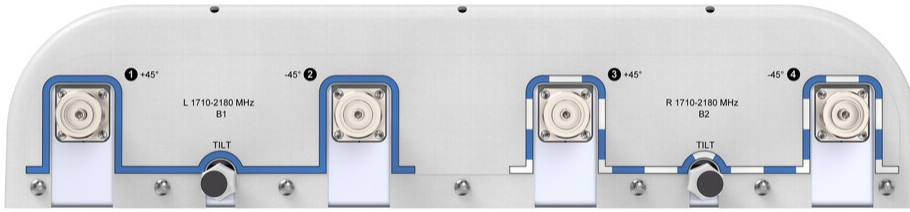
Model with Factory Installed AISG 2.0 Actuator	HBXX-3319DS-A2M
---	-----------------

Dimensions

Width	564 mm 22.205 in
Depth	125 mm 4.921 in
Length	1448 mm 57.008 in
Net Weight, without mounting kit	17.3 kg 38.14 lb

Port Configuration

HBXX-3319DS-VTM | HBXX-3319DS-A2M



Electrical Specifications

Impedance	50 ohm
Operating Frequency Band	1710 – 2180 MHz
Polarization	±45°

Electrical Specifications

Frequency Band, MHz	1710–1880	1850–1990	1920–2180
Gain, dBi	20.3	20.3	20.7
Beamwidth, Horizontal, degrees	36	35.1	34
Beamwidth, Vertical, degrees	6.5	6.2	5.9
Beam Tilt, degrees	0–10	0–10	0–10
USLS (First Lobe), dB	15	16	16
Front-to-Back Ratio at 180°, dB	41	42	42
Isolation, Cross Polarization, dB	30	30	30
Isolation, Inter-band, dB	28	30	30
VSWR Return loss, dB	1.5 14.0	1.5 14.0	1.5 14.0
PIM, 3rd Order, 2 x 20 W, dBc	-153	-153	-153
Input Power per Port at 50°C, maximum, watts	250	250	250

Electrical Specifications, BASTA

Frequency Band, MHz	1710–1880	1850–1990	1920–2180
Gain by all Beam Tilts, average, dBi	20	20	20.3
Gain by all Beam Tilts Tolerance, dB	±0.5	±0.5	±0.8
Gain by Beam Tilt, average, dBi	0° 20.1 5° 20.1 10° 19.7	0° 20.0 5° 20.1 10° 19.7	0° 20.4 5° 20.5 10° 19.9
Beamwidth, Horizontal Tolerance, degrees	±2.8	±1.6	±2.4
Beamwidth, Vertical Tolerance, degrees	±0.3	±0.3	±0.4
USLS, beampeak to 20° above beampeak, dB	14	15	15

HBXX-3319DS-VTM | HBXX-3319DS-A2M

Front-to-Back Total Power at 180° ± 30°, dB	36	38	37
CPR at Boresight, dB	25	24	24

Mechanical Specifications

Wind Loading @ Velocity, frontal	1,019.0 N @ 150 km/h (229.1 lbf @ 150 km/h)
Wind Loading @ Velocity, lateral	176.0 N @ 150 km/h (39.6 lbf @ 150 km/h)
Wind Loading @ Velocity, rear	1,089.0 N @ 150 km/h (244.8 lbf @ 150 km/h)
Wind Speed, maximum	201 km/h (125 mph)

Packaging and Weights

Width, packed	758 mm 29.843 in
Depth, packed	281 mm 11.063 in
Length, packed	1934 mm 76.142 in
Weight, gross	30.8 kg 67.902 lb

Regulatory Compliance/Certifications

Agency	Classification
CE	Compliant with the relevant CE product directives
CHINA-ROHS	Below maximum concentration value
ISO 9001:2015	Designed, manufactured and/or distributed under this quality management system
REACH-SVHC	Compliant as per SVHC revision on www.commscope.com/ProductCompliance
ROHS	Compliant
UK-ROHS	Compliant



Included Products

- BSAMNT-3 – Wide Profile Antenna Downtilt Mounting Kit for 2.4 - 4.5 in (60 - 115 mm) OD round members. Kit contains one scissor top bracket set and one bottom bracket set.

* Footnotes

Performance Note Severe environmental conditions may degrade optimum performance