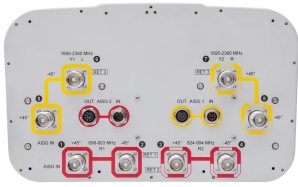


# JAHH-65B-R3B-V3



8-port sector antenna, 2x 698–803, 2x 824–894 and 4x 1695–2360 MHz, 65° HPBW, 3x RET and low bands have diplexers. Internal SBT's on first LB(Port 1) and first HB(Port 5).

- Internal SBT on low and high band allow remote RET control from the radio over the RF jumper cable
- One RET for 700MHz, one RET for 850MHz, and one RET for both high bands to ensure same tilt level for 4x Rx or 4x MIMO
- Internal filter on low band and interleaved dipole technology providing for attractive, low wind load mechanical package
- Separate RS-485 RET input/output for low and high band
- Supports re-configurable antenna sharing capability enabling control of the internal RET system using up to two separate RET compatible OEM radios
- The antenna is supplied with mounting kits that provide 0 degree of mechanical downtilt; optional downtilt mounting kits are available

## General Specifications

<b>Antenna Type</b>	Sector
<b>Band</b>	Multiband
<b>Color</b>	Light Gray (RAL 7035)
<b>Grounding Type</b>	RF connector body grounded to reflector and mounting bracket
<b>Performance Note</b>	Outdoor usage   Wind loading figures are validated by wind tunnel measurements described in white paper WP-112534-EN
<b>Radome Material</b>	Fiberglass, UV resistant
<b>Radiator Material</b>	Low loss circuit board
<b>Reflector Material</b>	Aluminum
<b>RF Connector Interface</b>	4.3-10 Female
<b>RF Connector Location</b>	Bottom
<b>RF Connector Quantity, high band</b>	4
<b>RF Connector Quantity, low band</b>	4
<b>RF Connector Quantity, total</b>	8

## Remote Electrical Tilt (RET) Information

<b>RET Hardware</b>	CommRET v2
<b>RET Interface</b>	8-pin DIN Female   8-pin DIN Male
<b>RET Interface, quantity</b>	2 female   2 male

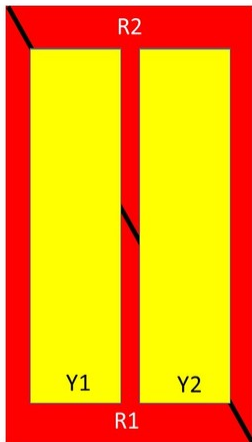
# JAHH-65B-R3B-V3

<b>Input Voltage</b>	10–30 Vdc
<b>Internal Bias Tee</b>	Port 1   Port 5
<b>Internal RET</b>	High band (1)   Low band (2)
<b>Power Consumption, idle state, maximum</b>	1 W
<b>Power Consumption, normal conditions, maximum</b>	8 W
<b>Protocol</b>	3GPP/AISG 2.0 (Single RET)

## Dimensions

<b>Width</b>	350 mm   13.78 in
<b>Depth</b>	208 mm   8.189 in
<b>Length</b>	1828 mm   71.969 in
<b>Net Weight, without mounting kit</b>	31.1 kg   68.564 lb

## Array Layout



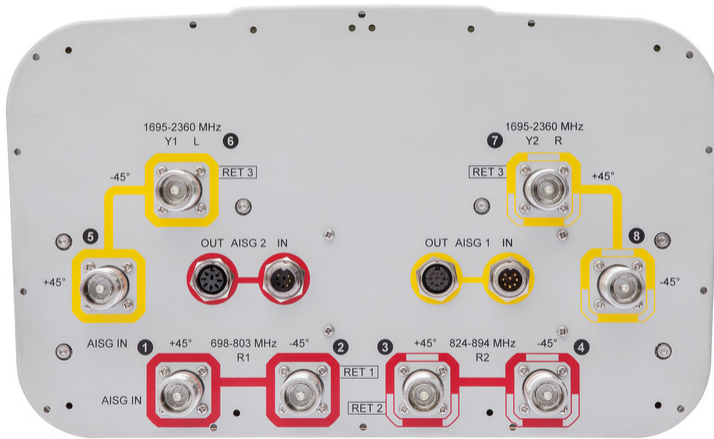
Array	Freq (MHz)	Conns	RET (SRET)	AISG RET UID
R1	698-803	1-2	1	CPxxxxxxxxxxxxxxxxR1
R2	824-894	3-4	2	CPxxxxxxxxxxxxxxxxR2
Y1	1695-2360	5-6	3	CPxxxxxxxxxxxxxxxxY1
Y2	1695-2360	7-8		

Left                  Right  
Bottom

(Sizes of colored boxes are not true depictions of array sizes)

## Port Configuration

# JAHH-65B-R3B-V3



## Electrical Specifications

<b>Impedance</b>	50 ohm
<b>Operating Frequency Band</b>	1695 – 2360 MHz   698 – 803 MHz   824 – 894 MHz
<b>Polarization</b>	±45°
<b>Total Input Power, maximum</b>	900 W @ 50 °C

## Electrical Specifications

Frequency Band, MHz	698–803	824–894	1695–1880	1850–1990	1920–2200	2300–2360
<b>Gain, dBi</b>	14.9	15.3	17.9	18.5	18.8	19.3
<b>Beamwidth, Horizontal, degrees</b>	67	65	62	60	61	64
<b>Beamwidth, Vertical, degrees</b>	11.8	10.4	5.6	5.2	4.9	4.5
<b>Beam Tilt, degrees</b>	2–14	2–14	0–10	0–10	0–10	0–10
<b>USLS (First Lobe), dB</b>	20	20	17	17	18	20
<b>Front-to-Back Ratio at 180°, dB</b>	32	32	34	39	36	40
<b>Isolation, Cross Polarization, dB</b>	25	25	25	25	25	25
<b>Isolation, Inter-band, dB</b>	30	30	30	30	30	30
<b>VSWR   Return loss, dB</b>	1.5   14.0	1.5   14.0	1.5   14.0	1.5   14.0	1.5   14.0	1.5   14.0

# JAHH-65B-R3B-V3

<b>PIM, 3rd Order, 2 x 20 W, dBc</b>	-150	-150	-150	-150	-150	-150
<b>Input Power per Port at 50°C, maximum, watts</b>	300	300	250	250	250	200

## Electrical Specifications, BASTA

<b>Frequency Band, MHz</b>	<b>698–803</b>	<b>824–894</b>	<b>1695–1880</b>	<b>1850–1990</b>	<b>1920–2200</b>	<b>2300–2360</b>
<b>Gain by all Beam Tilts, average, dBi</b>	14.7	15.2	17.6	18.2	18.5	18.8
<b>Gain by all Beam Tilts Tolerance, dB</b>	±0.3	±0.3	±0.6	±0.5	±0.5	±0.7
<b>Gain by Beam Tilt, average, dBi</b>	2°   14.6 8°   14.8 14°   14.5	2°   15.2 8°   15.3 14°   15.1	0°   17.3 5°   17.7 10°   17.7	0°   17.8 5°   18.3 10°   18.3	0°   17.9 5°   18.5 10°   18.5	0°   18.1 5°   18.9 10°   19.0
<b>Beamwidth, Horizontal Tolerance, degrees</b>	±1.6	±1.2	±4.0	±2	±1.9	±3.3
<b>Beamwidth, Vertical Tolerance, degrees</b>	±0.9	±0.5	±0.3	±0.2	±0.3	±0.2
<b>USLS, beampeak to 20° above beampeak, dB</b>	19	20	15	16	17	17
<b>Front-to-Back Total Power at 180° ± 30°, dB</b>	24	23	27	30	25	28
<b>CPR at Boresight, dB</b>	18	17	19	21	21	21
<b>CPR at Sector, dB</b>	9	11	12	12	12	8

## Mechanical Specifications

<b>Effective Projective Area (EPA), frontal</b>	0.28 m <sup>2</sup>   3.014 ft <sup>2</sup>
<b>Effective Projective Area (EPA), lateral</b>	0.24 m <sup>2</sup>   2.583 ft <sup>2</sup>
<b>Mechanical Tilt Range</b>	0°–16°
<b>Wind Loading @ Velocity, frontal</b>	301.0 N @ 150 km/h (67.7 lbf @ 150 km/h)
<b>Wind Loading @ Velocity, lateral</b>	254.0 N @ 150 km/h (57.1 lbf @ 150 km/h)
<b>Wind Loading @ Velocity, maximum</b>	638.0 N @ 150 km/h (143.4 lbf @ 150 km/h)
<b>Wind Loading @ Velocity, rear</b>	319.0 N @ 150 km/h (71.7 lbf @ 150 km/h)
<b>Wind Speed, maximum</b>	241 km/h (150 mph)

## Packaging and Weights

<b>Width, packed</b>	450 mm   17.717 in
<b>Depth, packed</b>	355 mm   13.976 in
<b>Length, packed</b>	1975 mm   77.756 in

# JAHH-65B-R3B-V3

---

**Weight, gross**

39.8 kg | 87.744 lb

## Regulatory Compliance/Certifications

**Agency**

**Classification**

CHINA-ROHS

Above maximum concentration value

ISO 9001:2015

Designed, manufactured and/or distributed under this quality management system

ROHS

Compliant/Exempted

UK-ROHS

Compliant/Exempted



## Included Products

BSAMNT-2F

– Mounting bracket for cylindrical pipe installations (60-115mm pipe diameter) for fix mechanical tilt applications.

## \* Footnotes

**Performance Note**

Severe environmental conditions may degrade optimum performance

# BSAMNT-2F



Mounting bracket for cylindrical pipe installations (60-115mm pipe diameter) for fix mechanical tilt applications.

## Product Classification

**Product Type** Fixed tilt mounting kit

## General Specifications

**Application** Outdoor

**Color** Silver

## Dimensions

**Compatible Diameter, maximum** 115 mm | 4.528 in

**Compatible Diameter, minimum** 60 mm | 2.362 in

**Weight, net** 3.8 kg | 8.378 lb

## Material Specifications

**Material Type** Galvanized steel

## Packaging and Weights

**Included** Brackets | Hardware

**Packaging quantity** 1

**Weight, gross** 4 kg | 8.818 lb

## Regulatory Compliance/Certifications

Agency	Classification
CE	Compliant with the relevant CE product directives
CHINA-ROHS	Below maximum concentration value
ISO 9001:2015	Designed, manufactured and/or distributed under this quality management system
REACH-SVHC	Compliant as per SVHC revision on <a href="http://www.commscope.com/ProductCompliance">www.commscope.com/ProductCompliance</a>
ROHS	Compliant
UK-ROHS	Compliant

# BSAMNT-2F

---

