

# LDX-3316DS-VTM | LDX-3316DS-A1M



2-port sector antenna, 2x 790–960 MHz, 33° HPBW, RET compatible

## OBSOLETE

This product was discontinued on: March 27, 2020

## General Specifications

<b>Antenna Type</b>	Sector
<b>Band</b>	Single band
<b>Color</b>	Light Gray (RAL 7035)
<b>Grounding Type</b>	RF connector inner conductor and body grounded to reflector and mounting bracket
<b>Performance Note</b>	Outdoor usage
<b>Radome Material</b>	Fiberglass, UV resistant
<b>Radiator Material</b>	Aluminum
<b>RF Connector Interface</b>	7-16 DIN Female
<b>RF Connector Location</b>	Bottom
<b>RF Connector Quantity, low band</b>	2
<b>RF Connector Quantity, total</b>	2

## Remote Electrical Tilt (RET) Information

<b>Model with Factory Installed AISG 2.0 Actuator</b>	LDX-3316DS-A1M
---	----------------

## Dimensions

<b>Width</b>	591 mm   23.268 in
<b>Depth</b>	179 mm   7.047 in
<b>Length</b>	1306 mm   51.417 in
<b>Net Weight, without mounting kit</b>	17.9 kg   39.463 lb

## Electrical Specifications

<b>Impedance</b>	50 ohm
------------------	--------

# LDX-3316DS-VTM | LDX-3316DS-A1M

<b>Operating Frequency Band</b>	790 – 960 MHz
<b>Polarization</b>	±45°

## Electrical Specifications

<b>Frequency Band, MHz</b>	<b>790–896</b>	<b>870–960</b>
<b>Gain, dBi</b>	17.8	18.3
<b>Beamwidth, Horizontal, degrees</b>	34	32
<b>Beamwidth, Vertical, degrees</b>	16	15
<b>Beam Tilt, degrees</b>	2–12	2–12
<b>USLS (First Lobe), dB</b>	14	13
<b>Front-to-Back Ratio at 180°, dB</b>	31	36
<b>CPR at Boresight, dB</b>	15	11
<b>Isolation, Cross Polarization, dB</b>	30	30
<b>VSWR   Return loss, dB</b>	1.4   15.6	1.4   15.6
<b>PIM, 3rd Order, 2 x 20 W, dBc</b>	-150	-150
<b>Input Power per Port, maximum, watts</b>	300	300

## Electrical Specifications, BASTA

<b>Frequency Band, MHz</b>	<b>790–896</b>	<b>870–960</b>
<b>Gain by all Beam Tilts, average, dBi</b>	17.5	17.9
<b>Gain by all Beam Tilts Tolerance, dB</b>	±0.6	±0.3
<b>Gain by Beam Tilt, average, dBi</b>	2°   17.6 7°   17.5 12°   17.5	2°   18.0 7°   18.0 12°   17.7
<b>Beamwidth, Horizontal Tolerance, degrees</b>	±2	±2
<b>Beamwidth, Vertical Tolerance, degrees</b>	±1	±1
<b>USLS, beampeak to 20° above beampeak, dB</b>	14	14
<b>Front-to-Back Total Power at 180° ± 30°, dB</b>	29	29
<b>CPR at Boresight, dB</b>	15	12

## Mechanical Specifications

<b>Wind Loading @ Velocity, frontal</b>	933.0 N @ 150 km/h (209.7 lbf @ 150 km/h)
<b>Wind Loading @ Velocity, lateral</b>	129.0 N @ 150 km/h (29.0 lbf @ 150 km/h)
<b>Wind Loading @ Velocity, rear</b>	1,059.0 N @ 150 km/h (238.1 lbf @ 150 km/h)
<b>Wind Speed, maximum</b>	241 km/h (150 mph)

# LDX-3316DS-VTM | LDX-3316DS-A1M

---

## Packaging and Weights

<b>Width, packed</b>	814 mm   32.047 in
<b>Depth, packed</b>	320 mm   12.598 in
<b>Length, packed</b>	1712 mm   67.402 in
<b>Weight, gross</b>	29.4 kg   64.816 lb

## Regulatory Compliance/Certifications

<b>Agency</b>	<b>Classification</b>
CE	Compliant with the relevant CE product directives
CHINA-ROHS	Below maximum concentration value
ISO 9001:2015	Designed, manufactured and/or distributed under this quality management system
REACH-SVHC	Compliant as per SVHC revision on <a href="http://www.commscope.com/ProductCompliance">www.commscope.com/ProductCompliance</a>
ROHS	Compliant
UK-ROHS	Compliant



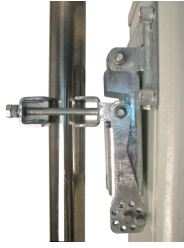
## Included Products

- BSAMNT-3 – Wide Profile Antenna Downtilt Mounting Kit for 2.4 - 4.5 in (60 - 115 mm) OD round members. Kit contains one scissor top bracket set and one bottom bracket set.

## \* Footnotes

**Performance Note** Severe environmental conditions may degrade optimum performance

# BSAMNT-3



Wide Profile Antenna Downtilt Mounting Kit for 2.4 - 4.5 in (60 - 115 mm) OD round members. Kit contains one scissor top bracket set and one bottom bracket set.

## Product Classification

**Product Type** Downtilt mounting kit

## General Specifications

**Application** Outdoor

**Color** Silver

## Dimensions

**Compatible Diameter, maximum** 115 mm | 4.528 in

**Compatible Diameter, minimum** 60 mm | 2.362 in

**Weight, net** 6.2 kg | 13.669 lb

## Material Specifications

**Material Type** Galvanized steel

## Packaging and Weights

**Included** Brackets | Hardware

**Packaging quantity** 1

**Weight, gross** 6.4 kg | 14.11 lb

## Regulatory Compliance/Certifications

Agency	Classification
CE	Compliant with the relevant CE product directives
CHINA-ROHS	Below maximum concentration value
ISO 9001:2015	Designed, manufactured and/or distributed under this quality management system
REACH-SVHC	Compliant as per SVHC revision on <a href="http://www.commscope.com/ProductCompliance">www.commscope.com/ProductCompliance</a>
ROHS	Compliant
UK-ROHS	Compliant

# BSAMNT-3

---

