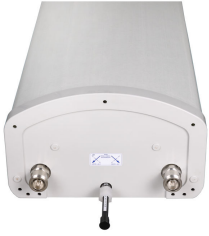


LNx-8514DS-A1M



2-port sector antenna, 698–896 MHz, 85° HPBW, ATM200

- Great solution to maximize network coverage and capacity
- Excellent front-to-back ratio, USLS, VSWR, and PIM specifications to enhance network quality
- Fully compatible with Andrew remote electrical tilt system for greater OpEx savings
- Vertical beam optimized for capacity efficiency
- The RF connectors are designed for IP67 rating and the radome for IP56 rating

OBSOLETE

This product was discontinued on: November 30, 2023

General Specifications

Antenna Type	Sector
Band	Single band
Color	Light Gray (RAL 7035)
Grounding Type	RF connector inner conductor and body grounded to reflector and mounting bracket
Performance Note	Outdoor usage Wind loading figures are validated by wind tunnel measurements described in white paper WP-112534-EN
Radome Material	Fiberglass, UV resistant
Radiator Material	Aluminum
RF Connector Interface	7-16 DIN Female
RF Connector Location	Bottom
RF Connector Quantity, high band	0
RF Connector Quantity, mid band	0
RF Connector Quantity, low band	2
RF Connector Quantity, total	2

Dimensions

Width	301 mm 11.85 in
Depth	181 mm 7.126 in
Length	2449 mm 96.417 in
Net Weight, without mounting kit	23.1 kg 50.927 lb

LNx-8514DS-A1M

Electrical Specifications

Impedance	50 ohm
Operating Frequency Band	698 – 896 MHz
Polarization	±45°

Electrical Specifications

Frequency Band, MHz	698–806	806–896
Gain, dBi	16.1	16.8
Beamwidth, Horizontal, degrees	85	84
Beamwidth, Vertical, degrees	8.6	7.8
Beam Tilt, degrees	0–8	0–8
USLS (First Lobe), dB	17	17
Front-to-Back Ratio at 180°, dB	27	27
CPR at Boresight, dB	18	18
CPR at Sector, dB	12	11
Isolation, Cross Polarization, dB	30	30
VSWR Return loss, dB	1.4 15.6	1.4 15.6
PIM, 3rd Order, 2 x 20 W, dBc	-153	-153
Input Power per Port, maximum, watts	400	400

Mechanical Specifications

Wind Loading @ Velocity, frontal	879.0 N @ 150 km/h (197.6 lbf @ 150 km/h)
Wind Loading @ Velocity, lateral	273.0 N @ 150 km/h (61.4 lbf @ 150 km/h)
Wind Loading @ Velocity, rear	1,033.0 N @ 150 km/h (232.2 lbf @ 150 km/h)
Wind Speed, maximum	241 km/h (150 mph)

Packaging and Weights

Width, packed	437 mm 17.205 in
Depth, packed	347 mm 13.661 in
Length, packed	2907 mm 114.449 in
Weight, gross	42.4 kg 93.476 lb

Regulatory Compliance/Certifications

Agency	Classification
---------------	-----------------------

LNx-8514DS-A1M

CHINA-ROHS	Above maximum concentration value
ISO 9001:2015	Designed, manufactured and/or distributed under this quality management system
ROHS	Compliant/Exempted
UK-ROHS	Compliant/Exempted



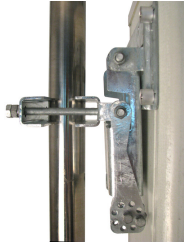
Included Products

- | | | |
|----------|---|--|
| BSAMNT-1 | - | Wide Profile Antenna Downtilt Mounting Kit for 2.4 - 4.5 in (60 - 115 mm) OD round members. Kit contains one scissor top bracket set and one bottom bracket set. |
| BSAMNT-M | - | Middle Downtilt Mounting Kit for Long Antennas for 2.4 - 4.5 in (60 - 115 mm) OD round members. Kit contains one scissor bracket set. |

* Footnotes

Performance Note Severe environmental conditions may degrade optimum performance

BSAMNT-1



Wide Profile Antenna Downtilt Mounting Kit for 2.4 - 4.5 in (60 - 115 mm) OD round members. Kit contains one scissor top bracket set and one bottom bracket set.

Product Classification

Product Type Downtilt mounting kit

General Specifications

Application Outdoor

Color Silver

Dimensions

Compatible Diameter, maximum 114.3 mm | 4.5 in

Compatible Diameter, minimum 61 mm | 2.402 in

Weight, net 6 kg | 13.228 lb

Material Specifications

Material Type Galvanized steel

Packaging and Weights

Included Brackets | Hardware

Packaging quantity 1

Weight, gross 6.2 kg | 13.669 lb

Regulatory Compliance/Certifications

Agency	Classification
CE	Compliant with the relevant CE product directives
CHINA-ROHS	Above maximum concentration value
ISO 9001:2015	Designed, manufactured and/or distributed under this quality management system
ROHS	Compliant/Exempted
UK-ROHS	Compliant/Exempted



BSAMNT-M



Middle Downtilt Mounting Kit for Long Antennas for 2.4 - 4.5 in (60 - 115 mm) OD round members. Kit contains one scissor bracket set.

Product Classification

Product Type Downtilt mounting kit

General Specifications

Application Outdoor

Color Silver

Dimensions

Compatible Diameter, maximum 115 mm | 4.528 in

Compatible Diameter, minimum 60 mm | 2.362 in

Weight, net 4.5 kg | 9.921 lb

Material Specifications

Material Type Galvanized steel

Packaging and Weights

Included Brackets | Hardware

Packaging quantity 1

Regulatory Compliance/Certifications

Agency	Classification
CHINA-ROHS	Below maximum concentration value
ISO 9001:2015	Designed, manufactured and/or distributed under this quality management system
REACH-SVHC	Compliant as per SVHC revision on www.commscope.com/ProductCompliance
ROHS	Compliant
UK-ROHS	Compliant

