

VV-65A-R2-V2



4-port sector antenna, 4x 1695–2690 MHz, 65° HPBW, 2x RET with manual override and tilt scales.

OBSOLETE

This product was discontinued on: November 30, 2023

Replaced By:

4P-4M-A2-V5

4-port sector antenna, 4x 1695–2690 MHz, 65°HPBW, 2x RET

General Specifications

Antenna Type	Sector
Band	Single band
Color	Light Gray (RAL 7035)
Grounding Type	RF connector inner conductor and body grounded to reflector and mounting bracket
Performance Note	Outdoor usage
Radome Material	Fiberglass, UV resistant
RF Connector Interface	7-16 DIN Female
RF Connector Location	Bottom
RF Connector Quantity, high band	4
RF Connector Quantity, total	4

Remote Electrical Tilt (RET) Information

RET Interface	8-pin DIN Female 8-pin DIN Male
RET Interface, quantity	1 female 1 male
Input Voltage	10–30 Vdc
Internal RET	High band (2)
Power Consumption, idle state, maximum	1 W
Power Consumption, normal conditions, maximum	10 W
Protocol	3GPP/AISG 2.0 (Single RET)

VV-65A-R2-V2

Dimensions

Width	300 mm 11.811 in
Depth	115 mm 4.528 in
Length	1400 mm 55.118 in
Net Weight, without mounting kit	14 kg 30.865 lb

Port Configuration



Electrical Specifications

Impedance	50 ohm
Operating Frequency Band	1695 – 2690 MHz
Polarization	±45°
Total Input Power, maximum	450 W @ 50 °C

Electrical Specifications

Frequency Band, MHz	1695–1880	1850–1990	1920–2180	2300–2500	2500–2690
Gain, dBi	17.5	17.7	17.8	17.9	17.7
Beamwidth, Horizontal, degrees	66	66	68	68	67
Beamwidth, Vertical, degrees	6.7	6.3	5.9	5.2	4.9

VV-65A-R2-V2

Beam Tilt, degrees	0–10	0–10	0–10	0–10	0–10
USLS (First Lobe), dB	17	18	19	20	20
Front-to-Back Ratio at 180°, dB	33	35	36	32	32
Isolation, Cross Polarization, dB	28	28	28	28	28
Isolation, Inter-band, dB	28	28	28	28	28
VSWR Return loss, dB	1.5 14.0	1.5 14.0	1.5 14.0	1.5 14.0	1.5 14.0
PIM, 3rd Order, 2 x 20 W, dBc	-153	-153	-153	-153	-153
Input Power per Port at 50°C, maximum, watts	300	300	300	300	250

Electrical Specifications, BASTA

Frequency Band, MHz	1695–1880	1850–1990	1920–2180	2300–2500	2500–2690
Gain by all Beam Tilts, average, dBi	17.1	17.4	17.6	17.6	17.5
Gain by all Beam Tilts Tolerance, dB	±0.5	±0.4	±0.3	±0.4	±0.3
Gain by Beam Tilt, average, dBi	0° 16.8 5° 17.1 10° 17.1	0° 17.1 5° 17.4 10° 17.5	0° 17.3 5° 17.6 10° 17.6	0° 17.4 5° 17.7 10° 17.6	0° 17.3 5° 17.6 10° 17.4
Beamwidth, Horizontal Tolerance, degrees	±3.7	±3	±3.2	±3.7	±5.6
Beamwidth, Vertical Tolerance, degrees	±0.4	±0.2	±0.4	±0.2	±0.2
USLS, beampeak to 20° above beampeak, dB	16	17	16	16	16
Front-to-Back Total Power at 180° ± 30°, dB	25	25	27	26	23
CPR at Boresight, dB	16	16	17	19	22
CPR at Sector, dB	11	10	12	9	11

Mechanical Specifications

Mechanical Tilt Range	0°–18°
Wind Loading @ Velocity, frontal	510.0 N @ 150 km/h (114.7 lbf @ 150 km/h)
Wind Loading @ Velocity, lateral	131.0 N @ 150 km/h (29.5 lbf @ 150 km/h)
Wind Loading @ Velocity, rear	608.0 N @ 150 km/h (136.7 lbf @ 150 km/h)
Wind Speed, maximum	241 km/h (150 mph)

VV-65A-R2-V2

Packaging and Weights

Width, packed	445 mm 17.52 in
Depth, packed	240 mm 9.449 in
Length, packed	1520 mm 59.843 in
Weight, gross	22.9 kg 50.486 lb

Regulatory Compliance/Certifications

Agency	Classification
ISO 9001:2015	Designed, manufactured and/or distributed under this quality management system



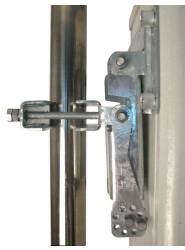
Included Products

- BSAMNT-3 – Wide Profile Antenna Downtilt Mounting Kit for 2.4 - 4.5 in (60 - 115 mm) OD round members. Kit contains one scissor top bracket set and one bottom bracket set.

* Footnotes

Performance Note	Severe environmental conditions may degrade optimum performance
-------------------------	---

BSAMNT-3



Wide Profile Antenna Downtilt Mounting Kit for 2.4 - 4.5 in (60 - 115 mm) OD round members. Kit contains one scissor top bracket set and one bottom bracket set.

Product Classification

Product Type Downtilt mounting kit

General Specifications

Application Outdoor

Color Silver

Dimensions

Compatible Diameter, maximum 115 mm | 4.528 in

Compatible Diameter, minimum 60 mm | 2.362 in

Weight, net 6.2 kg | 13.669 lb

Material Specifications

Material Type Galvanized steel

Packaging and Weights

Included Brackets | Hardware

Packaging quantity 1

Weight, gross 6.4 kg | 14.11 lb

Regulatory Compliance/Certifications

Agency	Classification
CE	Compliant with the relevant CE product directives
CHINA-ROHS	Below maximum concentration value
ISO 9001:2015	Designed, manufactured and/or distributed under this quality management system
REACH-SVHC	Compliant as per SVHC revision on www.commscope.com/ProductCompliance
ROHS	Compliant
UK-ROHS	Compliant

BSAMNT-3

