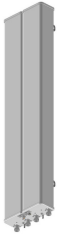


# VVPX310R-V5



4-port sector antenna, 4x 1710–2690 MHz, 65° HPBW, 2x RET with manual override

- Integrated Internal Remote Electrical Tilt (RET), with independent control of electrical tilt with manual override on all arrays

## Alternative products available:

VV-65A-R1B

4-port sector antenna, 4x 1695–2690 MHz, 65° HPBW, 1x RET and 1x SBT, the two highband arrays utilize a common tilt.

## General Specifications

<b>Antenna Type</b>	Sector
<b>Band</b>	Single band
<b>Grounding Type</b>	RF connector inner conductor and body grounded to reflector and mounting bracket
<b>Performance Note</b>	Outdoor usage
<b>Radome Material</b>	ASA, UV stabilized
<b>RF Connector Interface</b>	7-16 DIN Female
<b>RF Connector Location</b>	Bottom
<b>RF Connector Quantity, high band</b>	4
<b>RF Connector Quantity, total</b>	4

## Remote Electrical Tilt (RET) Information

<b>RET Interface</b>	8-pin DIN Female   8-pin DIN Male
<b>RET Interface, quantity</b>	1 female   1 male
<b>Input Voltage</b>	10–30 Vdc
<b>Internal RET</b>	High band (2)
<b>Power Consumption, idle state, maximum</b>	2 W
<b>Power Consumption, normal conditions, maximum</b>	13 W
<b>Protocol</b>	3GPP/AISG 2.0 (Single RET)

## Dimensions

<b>Width</b>	290 mm   11.417 in
--------------	--------------------

# VVPX310R-V5

<b>Depth</b>	103 mm   4.055 in
<b>Length</b>	1328 mm   52.283 in
<b>Net Weight, without mounting kit</b>	12.5 kg   27.558 lb

## Electrical Specifications

<b>Impedance</b>	50 ohm
<b>Operating Frequency Band</b>	1710 – 2690 MHz
<b>Polarization</b>	±45°

## Electrical Specifications

<b>Frequency Band, MHz</b>	<b>1710–1920</b>	<b>1920–2180</b>	<b>2300–2690</b>
<b>Gain, dBi</b>	17	17.7	18.4
<b>Beamwidth, Horizontal, degrees</b>	68	66.8	63
<b>Beamwidth, Vertical, degrees</b>	8.1	7.2	5.9
<b>Beam Tilt, degrees</b>	0–10	0–10	0–10
<b>USLS (First Lobe), dB</b>	19	19	18
<b>Front-to-Back Ratio at 180°, dB</b>	29	30	33
<b>CPR at Boresight, dB</b>	18	18	18
<b>CPR at Sector, dB</b>	13	10	9
<b>Isolation, Cross Polarization, dB</b>	30	30	30
<b>VSWR   Return loss, dB</b>	1.5   14.0	1.5   14.0	1.5   14.0
<b>PIM, 3rd Order, 2 x 20 W, dBc</b>	-150	-150	-150
<b>Input Power per Port, maximum, watts</b>	250	250	250

## Electrical Specifications, BASTA

<b>Frequency Band, MHz</b>	<b>1710–1920</b>	<b>1920–2180</b>	<b>2300–2690</b>
<b>Gain by all Beam Tilts, average, dBi</b>	16.8	17.4	18
<b>Gain by all Beam Tilts Tolerance, dB</b>	±0.3	±0.5	±0.4
<b>Gain by Beam Tilt, average, dBi</b>	0°   16.8 5°   16.8 10°   16.8	0°   17.4 5°   17.4 10°   17.4	0°   18.2 5°   18.1 10°   17.7
<b>Beamwidth, Horizontal Tolerance, degrees</b>	±2.7	±3.1	±4.5
<b>Beamwidth, Vertical Tolerance, degrees</b>	±0.5	±0.5	±0.5
<b>USLS, beampeak to 20° above beampeak, dB</b>	18	18	18
<b>Front-to-Back Total Power at 180° ± 30°, dB</b>	25	27	30

# VVPX310R-V5

---

<b>CPR at Boresight, dB</b>	19	19	20
<b>CPR at Sector, dB</b>	14	12	11

## Mechanical Specifications

<b>Wind Loading @ Velocity, maximum</b>	560.0 N @ 160 km/h (125.9 lbf @ 160 km/h)
<b>Wind Speed, maximum</b>	200 km/h (124 mph)

## Packaging and Weights

<b>Width, packed</b>	360 mm   14.173 in
<b>Depth, packed</b>	216 mm   8.504 in
<b>Length, packed</b>	1510 mm   59.449 in

## Regulatory Compliance/Certifications

<b>Agency</b>	<b>Classification</b>
CE	Compliant with the relevant CE product directives
CHINA-ROHS	Below maximum concentration value
ISO 9001:2015	Designed, manufactured and/or distributed under this quality management system
REACH-SVHC	Compliant as per SVHC revision on <a href="http://www.commscope.com/ProductCompliance">www.commscope.com/ProductCompliance</a>
ROHS	Compliant
UK-ROHS	Compliant



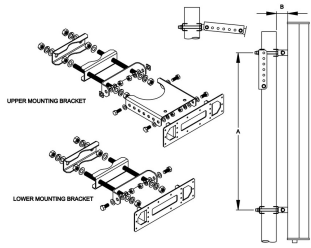
## Included Products

T-041-GL-E	-	Adjustable Tilt Pipe Mounting Kit for 2.0"-4.5" (60-115mm) OD round members for panel antennas. Includes 2 clamp sets.
------------	---	--

## \* Footnotes

<b>Performance Note</b>	Severe environmental conditions may degrade optimum performance
-------------------------	---

# T-041-GL-E



Adjustable Tilt Pipe Mounting Kit for 2.0"-4.5" (60-115mm) OD round members for panel antennas. Includes 2 clamp sets.

## Product Classification

**Product Type** Adjustable tilt mounting kit

## General Specifications

**Application** Outdoor

**Color** Silver

## Dimensions

**Compatible Length, maximum** 1500 mm | 59.055 in

**Compatible Length, minimum** 1200 mm | 47.244 in

**Compatible Diameter, maximum** 115 mm | 4.528 in

**Compatible Diameter, minimum** 60 mm | 2.362 in

**Antenna-to-Pipe Distance** 85 mm | 3.346 in

**Bracket-to-Bracket Distance** 976 mm | 38.425 in

**Weight, net** 5.5 kg | 12.125 lb

## Material Specifications

**Material Type** Galvanized steel

## Mechanical Specifications

**Mechanical Tilt** 0°-12° in steps of 2°

## Packaging and Weights

**Included** Brackets | Hardware

**Packaging quantity** 1

## Regulatory Compliance/Certifications

Agency	Classification
CE	Compliant with the relevant CE product directives

# T-041-GL-E

---

CHINA-ROHS	Below maximum concentration value
ISO 9001:2015	Designed, manufactured and/or distributed under this quality management system
REACH-SVHC	Compliant as per SVHC revision on <a href="http://www.commscope.com/ProductCompliance">www.commscope.com/ProductCompliance</a>
ROHS	Compliant
UK-ROHS	Compliant

