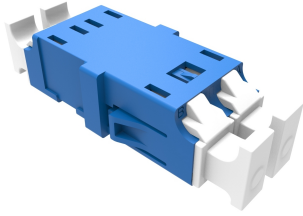


EJ1991-000 | OC-ADP-L1-L1-NFCD



Fiber Optic Duplex Adapter, Singlemode LC/UPC, blue, flangeless

- High quality zirconia ceramic split sleeves ensuring high precision alignment, reliability and improved reconnect ability
- Translucent easy grip dust cap and integrated mounting clips
- High quality one piece housing, no ultrasonic welding

OBSOLETE

This product was discontinued on: June 1, 2022

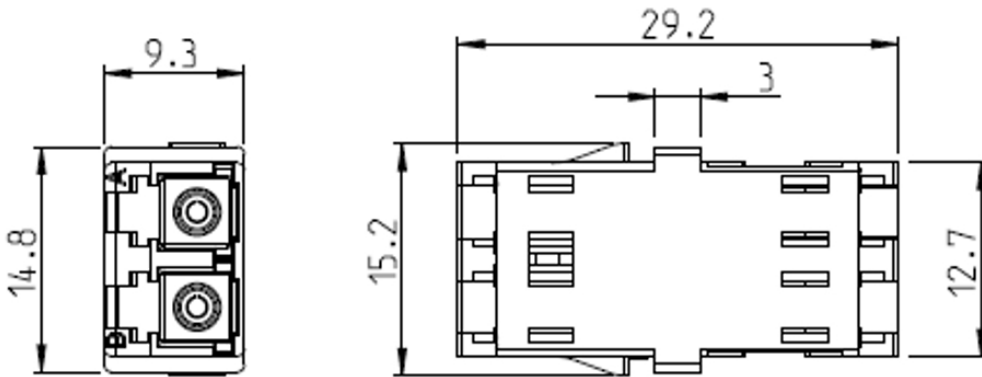
Product Classification

| | |
|------------------------------|---|
| Regional Availability | Asia Australia/New Zealand EMEA Latin America North America |
| Product Type | Fiber adapter |
| Product Series | OC-ADP |

General Specifications

| | |
|-------------------------------|------------------------------|
| Body Style | Duplex |
| Color | Blue |
| Interface | LC/UPC |
| Mounting | Square flange |
| Total Ports, quantity | 2 |
| Transmission Standards | IEC 60754-1 IEC 61300-3-42 |

Outline Drawing



Material Specifications

Alignment Sleeve Material Ceramic

Mechanical Specifications

Coupling Retention Force 70 N | 15.737 lbf

Optical Specifications

Fiber Mode Singlemode

Insertion Loss, maximum 0.1 dB

Environmental Specifications

Operating Temperature -40 °C to +70 °C (-40 °F to +158 °F)

Packaging and Weights

Packaging quantity 1

Packaging Type Bag

Regulatory Compliance/Certifications

| Agency | Classification |
|------------|---|
| CHINA-ROHS | Below maximum concentration value |
| REACH-SVHC | Compliant as per SVHC revision on www.commscope.com/ProductCompliance |
| ROHS | Compliant |

UK-ROHS

Compliant

