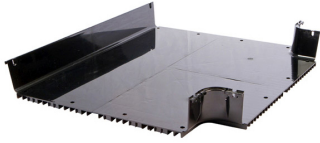


FGSB-MHRT-H/F



FiberGuide® Horizontal T, 4x24in, 4x12in Exit, Black

Product Classification

Regional Availability	Asia Australia/New Zealand EMEA Latin America North America
Portfolio	CommScope®
Product Type	Tee
Product Brand	FiberGuide®
Product Series	FGS

General Specifications

Product Feature	Transition
Color	Black
Orientation	Horizontal
Section Type	Tee section

Dimensions

System Dimensions	102 mm x 305 mm (4 in x 12 in) 102 mm x 610 mm (4 in x 24 in)
--------------------------	---

Ordering Tree

FGSB-MHRT-H/F

9 10
 FGS B - MHRT - H

Section Color

9	empty	yellow
	B	black

Section Size

10	A	4 x 4 in
	B	4 x 6 in
	B-VS	4 x 6 in, variable support bracket
	F	4 x 12 in
	F/B	4 x 12 in, 6 in exit
	F/B-S	4 x 12 in, 6 in exit, with variable support bracket
	F/B-VS	4 x 12 in, 6 in exit, variable support bracket
	F-VS	4 x 12 in, variable support bracket
	G	2 x 6 in
	H	4 x 24 in
	H/F	4 x 24 in, 12 in exit
	H/F-VS	4 x 24 in, 12 in exit, variable support bracket
	M	4 x 18 in
	M/F	4 x 18 in, 12 in exit
	M/H	4 x 18 in, 24 in exit
H/M	4 x 18 in	

* Support brackets only come in black

Material Specifications

Material Type Engineering Thermoplastic

Environmental Specifications

Flammability Rating CSA S143 | UL 2024 | UL 94 V-0

Halogen Characteristics Blue Angel | TCO '99 | WEEE

Safety Standard CSA | UL

Packaging and Weights

Weight, net 0.907 kg | 2 lb

Regulatory Compliance/Certifications

Agency

CHINA-ROHS

REACH-SVHC

ROHS

UK-ROHS

Classification

Below maximum concentration value

Compliant as per SVHC revision on www.commscope.com/ProductCompliance

Compliant

Compliant



