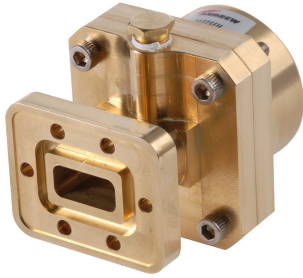


1127SEM



Fixed-tuned PDR120 for elliptical waveguide 127

Product Classification

Product Type Elliptical waveguide connector

General Specifications

Attachment Method Tab-flare | Tool-flare
Body Style Straight, fixed-tuned
Inner Contact Plating Unplated
Interface PDR120
Outer Contact Plating Unplated
Pressurizable Yes

Dimensions

Width 57.404 mm | 2.26 in
Length 72.39 mm | 2.85 in
Transition Length 39.37 mm | 1.55 in
Waveguide Size WR75 | WG17 | R120

Electrical Specifications

Insertion Loss, typical 0.01 dB
Operating Frequency Band 11.7 – 13.25 GHz
Peak Power at Frequency, maximum 34.00 kW @ 12.70 GHz

Material Specifications

Material Type Brass

Environmental Specifications

1127SEM

Operating Temperature -55 °C to +85 °C (-67 °F to +185 °F)

Storage Temperature -55 °C to +85 °C (-67 °F to +185 °F)

Packaging and Weights

Weight, net 0.7 kg | 1.543 lb

Regulatory Compliance/Certifications

Agency

ISO 9001:2015



Classification

Designed, manufactured and/or distributed under this quality management system

* Footnotes

Insertion Loss, typical $0.05\sqrt{\text{freq}}$ (GHz) (not applicable for elliptical waveguide)