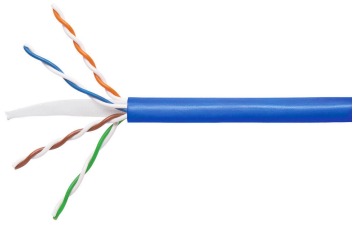


# 884023914/10 | CS34Z3 BLU C6 4/24 U/UTP CPK 305M



CS34Z3 Category 6 U/UTP Cable, low smoke zero halogen, blue jacket, 4 pair count, 1000 ft (305 m) length CommPak

## Product Classification

<b>Regional Availability</b>	EMEA
<b>Portfolio</b>	NETCONNECT®
<b>Product Type</b>	Twisted pair cable
<b>Ordering Note</b>	Available in Europe, Middle East, and Africa

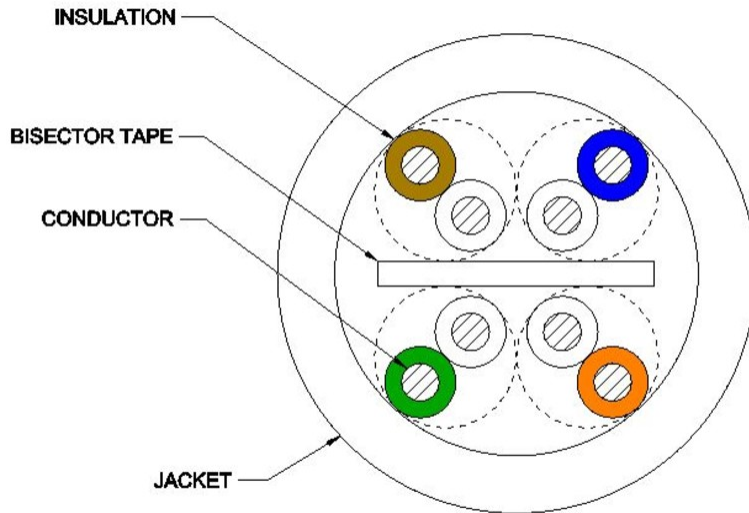
## General Specifications

<b>Product Number</b>	CS34Z3
<b>ANSI/TIA Category</b>	6
<b>Cable Component Type</b>	Horizontal
<b>Cable Type</b>	U/UTP (unshielded)
<b>Conductor Type, singles</b>	Solid
<b>Conductors, quantity</b>	8
<b>Jacket Color</b>	Blue
<b>Note</b>	All electrical transmission tests include swept frequency measurements
<b>Pairs, quantity</b>	4
<b>Separator Type</b>	Tape separator
<b>Transmission Standards</b>	ANSI/TIA-568.2-D   CENELEC EN 50288-6-1   ISO/IEC 11801 Class E

## Dimensions

<b>Cable Length</b>	304.8 m   1000 ft
<b>Diameter Over Insulated Conductor</b>	1.041 mm   0.041 in
<b>Diameter Over Jacket, nominal</b>	5.715 mm   0.225 in
<b>Jacket Thickness</b>	0.559 mm   0.022 in
<b>Conductor Gauge, singles</b>	24 AWG

## Cross Section Drawing



## Electrical Specifications

<b>Characteristic Impedance</b>	100 ohm
<b>dc Resistance Unbalance, maximum</b>	5 %
<b>dc Resistance, maximum</b>	9.38 ohms/100 m   2.859 ohms/100 ft
<b>Delay Skew, maximum</b>	24 ns
<b>Dielectric Strength, minimum</b>	1500 Vac   2500 Vdc
<b>Mutual Capacitance at Frequency</b>	5.6 nF/100 m @ 1 kHz
<b>Nominal Velocity of Propagation (NVP)</b>	71 %
<b>Operating Frequency, maximum</b>	250 MHz
<b>Operating Voltage, maximum</b>	80 V
<b>Remote Powering</b>	Fully complies with the recommendations set forth by IEEE 802.3bt (Type 4) for the safe delivery of power over LAN cable when installed according to ISO/IEC 14763-2, CENELEC EN 50174-1, CENELEC EN 50174-2 or TIA TSB-184-A
<b>Safety Voltage Rating</b>	300 V
<b>Segregation Class</b>	b

## Electrical Cable Performance

<b>CS</b>	CommScope	<b>NEXT</b>	Near End Crosstalk (dB/100m)
<b>STD</b>	Refers to the standard value listed under Transmission Standards in the Electrical Specifications above	<b>PSNEXT</b>	Power Sum Near End Crosstalk (db/100m)
<b>TYP</b>	Typical Electrical Performance	<b>ACRF</b>	Attenuation to Crosstalk Ratio - Far End (dB/100m)
<b>IL</b>	Insertion Loss (dB/100m)	<b>RL</b>	Return Loss (dB)
<b>ACR</b>	Attenuation to Crosstalk Ratio (dB/100m)	<b>ELTCTL</b>	Equal Level Transverse Conversion Transfer Loss (dB/100m)
<b>PSACR</b>	Power Sum Attenuation to Crosstalk Ratio (dB/100m)		
<b>PSACRF</b>	Power Sum Attenuation to Crosstalk Ratio - Far End (dB/100m)		
<b>TCL</b>	Transverse Conversion Loss (dB/100m)		

Freq. MHz	IL		NEXT		ACR		PSNEXT		PSACR		ACRF		PSACRF		RL		TCL		ELTCTL	
	CS	STD	CS	STD	CS	STD	CS	STD	CS	STD	CS	STD	CS	STD	CS	STD	CS	STD	CS	STD
1	2	2	75.3	74.3	73.3	72.3	72.3	72.3	70.3	70.3	68	67.8	65	64.8	20	20	40	40	35	35
4	3.8	3.8	66.3	65.3	62.5	61.5	63.3	63.3	59.5	59.5	56	55.8	53	52.8	23	23	40	40	23	23
8	5.3	5.3	61.8	60.8	56.4	55.4	58.8	58.8	53.4	53.4	49.9	49.7	46.9	46.7	24.5	24.5	40	40	16.9	16.9
10	6	6	60.3	59.3	54.3	53.3	57.3	57.3	51.3	51.3	48	47.8	45	44.8	25	25	40	40	15	15
16	7.6	7.6	57.2	56.2	49.7	48.7	54.2	54.2	46.7	46.7	43.9	43.7	40.9	40.7	25	25	38	38	10.9	10.9
20	8.5	8.5	55.8	54.8	47.3	46.3	52.8	52.8	44.3	44.3	42	41.8	39	38.8	25	25	37	37	9	9
25	9.5	9.5	54.3	53.3	44.8	43.8	51.3	51.3	41.8	41.8	40	39.8	37	36.8	24.3	24.3	36	36	7	7
31.25	10.7	10.7	52.9	51.9	42.2	41.2	49.9	49.9	39.2	39.2	38.1	37.9	35.1	34.9	23.6	23.6	35.1	35.1		
62.5	15.4	15.4	48.4	47.4	33	32	45.4	45.4	30	30	32.1	31.9	29.1	28.9	21.5	21.5	32	32		
100	19.8	19.8	45.3	44.3	25.5	24.5	42.3	42.3	22.5	22.5	28	27.8	25	24.8	20.1	20.1	30	30		
155	25.2	25.2	42.4	41.4	17.3	16.3	39.4	39.4	14.3	14.3	24.2	24	21.2	21	18.8	18.8	28.1	28.1		
200	29	29	40.8	39.8	11.8	10.8	37.8	37.8	8.8	8.8	22	21.8	19	18.8	18	18	27	27		
250	32.8	32.8	39.3	38.3	6.5	5.5	36.3	36.3	3.5	3.5	20	19.8	17	16.8	17.3	17.3	26	26		

## Material Specifications

<b>Conductor Material</b>	Bare copper
<b>Insulation Material</b>	Polyolefin
<b>Jacket Material</b>	Low Smoke Zero Halogen (LSZH)
<b>Separator Material</b>	Polyolefin

## Mechanical Specifications

<b>Pulling Tension, maximum</b>	11.34 kg   25 lb
---------------------------------	------------------

## Environmental Specifications

<b>Installation temperature</b>	0 °C to +60 °C (+32 °F to +140 °F)
<b>Operating Temperature</b>	-20 °C to +60 °C (-4 °F to +140 °F)
<b>Acid Gas Test Method</b>	IEC 60754-2
<b>EN50575 CPR Cable EuroClass Fire Performance</b>	Dca

# 884023914/10 | CS34Z3 BLU C6 4/24 U/UTP CPK 305M

---

<b>EN50575 CPR Cable EuroClass Smoke Rating</b>	s2
<b>EN50575 CPR Cable EuroClass Droplets Rating</b>	d2
<b>EN50575 CPR Cable EuroClass Acidity Rating</b>	a1
<b>Environmental Space</b>	Low Smoke Zero Halogen (LSZH)
<b>Flame Test Method</b>	IEC 60332-3-22
<b>Smoke Test Method</b>	IEC 61034-2

## Packaging and Weights

<b>Cable weight</b>	28.424 kg/km   19.1 lb/kft
<b>Packaging Type</b>	CommPak® box

## Regulatory Compliance/Certifications

<b>Agency</b>	<b>Classification</b>
CENELEC	EN 50575 compliant, Declaration of Performance (DoP) available
CHINA-ROHS	Below maximum concentration value
ISO 9001:2015	Designed, manufactured and/or distributed under this quality management system
REACH-SVHC	Compliant as per SVHC revision on <a href="http://www.commscope.com/ProductCompliance">www.commscope.com/ProductCompliance</a>
ROHS	Compliant
UK-ROHS	Compliant

