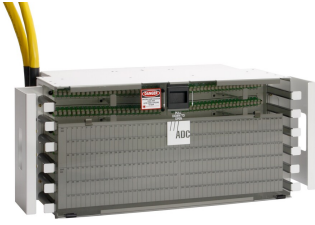


# FCM-7L/OZC031



FDF Fiber Termination Panel, 96 SC/APC, singlemode, 8 in x 23 in, putty white, pre-terminated with IFC cable, 31 meters, Stub tail at far end

## Product Classification

|                              |                                   |
|------------------------------|-----------------------------------|
| <b>Regional Availability</b> | Latin America   North America     |
| <b>Portfolio</b>             | CommScope®                        |
| <b>Product Type</b>          | Fiber patch panel, with IFC cable |
| <b>Product Series</b>        | FDF                               |

## General Specifications

|                                  |   |
|----------------------------------|---|
| <b>Functionality</b>             | Patching                                |
| <b>Application</b>               | Used in rear-load FDF-style frames only |
| <b>Body Style</b>                | Symmetrical                             |
| <b>Cable Exit Location</b>       | Upward                                  |
| <b>Cable Stub Type</b>           | IFC, stranded                           |
| <b>Color</b>                     | Putty white                             |
| <b>Color, front</b>              | Putty white                             |
| <b>Growth Configuration</b>      | Fully loaded                            |
| <b>Interface, front</b>          | SC/APC                                  |
| <b>Interface, rear</b>           | Stub tail                               |
| <b>Patch Cord Entry Location</b> | Front, left side   Front, right side    |
| <b>Rack Type</b>                 | EIA 23 in                               |
| <b>Rack Units</b>                | 4.57                                    |
| <b>Shelf Movement</b>            | Fixed                                   |
| <b>Total Ports, quantity</b>     | 96                                      |

## Dimensions

|               |                  |
|---------------|------------------|
| <b>Height</b> | 203.2 mm   8 in  |
| <b>Width</b>  | 584.2 mm   23 in |
| <b>Depth</b>  | 304.8 mm   12 in |

# FCM-7L/OZC031

---

**Cable Length** 31 m | 101.706 ft

## Material Specifications

**Finish** Powder coated

**Material Type** Steel

## Optical Specifications

**Fiber Mode** Singlemode

## Environmental Specifications

**Operating Temperature** -40 °C to +70 °C (-40 °F to +158 °F)

**Qualification Standards** Telcordia GR-409

## Packaging and Weights

**Packaging quantity** 1

## Regulatory Compliance/Certifications

| Agency     | Classification   |
|------------|--|
| CHINA-ROHS | Below maximum concentration value  |
| REACH-SVHC | Compliant as per SVHC revision on <a href="http://www.commscope.com/ProductCompliance">www.commscope.com/ProductCompliance</a> |
| ROHS       | Compliant  |
| UK-ROHS    | Compliant  |

