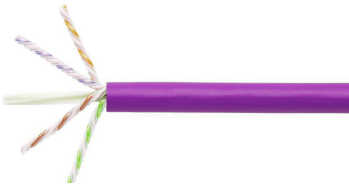


# UN874041684/30 | CS44P VLT C6A 4/23 U/UTP RL 3KFT

---



CS44P ETL Verified Category 6A U/UTP Cable, plenum, violet jacket, 4 pair count, 3000 ft (914 m) length reel

## Product Classification

<b>Regional Availability</b>	North America
<b>Portfolio</b>	Uniprise®
<b>Product Type</b>	Twisted pair cable

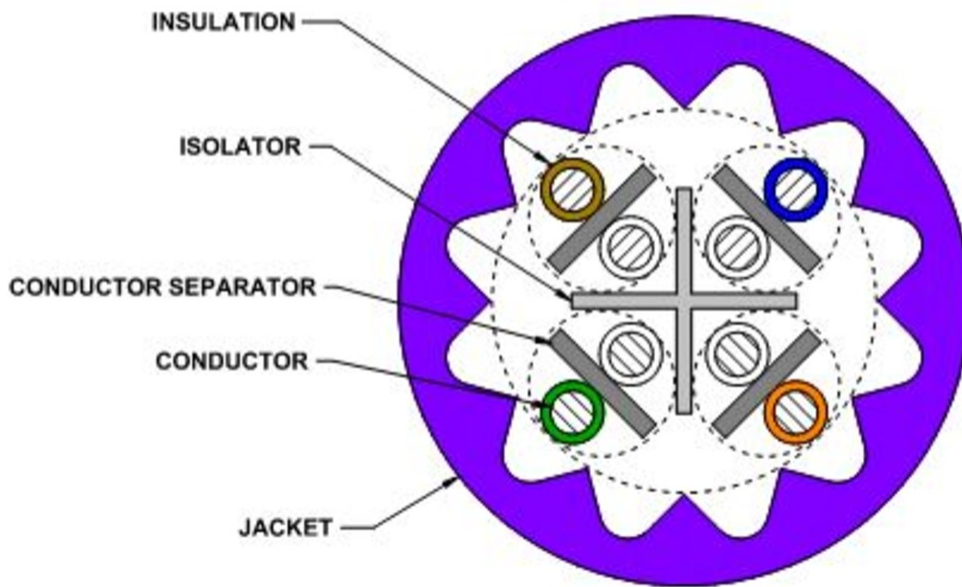
## General Specifications

<b>Product Number</b>	CS44P
<b>ANSI/TIA Category</b>	6A
<b>Cable Component Type</b>	Horizontal
<b>Cable Type</b>	U/UTP (unshielded)
<b>Conductor Type, singles</b>	Solid
<b>Conductors, quantity</b>	8
<b>Jacket Color</b>	Violet
<b>Note</b>	Consult ANSI/TIA-568-C.2 Annex G for length de-rating guidance for cable installation in higher temperature environments
<b>Pairs, quantity</b>	4
<b>Separator Type</b>	Bisector
<b>Transmission Standards</b>	ANSI/TIA-568.2-D   ISO/IEC 11801 Class EA

## Dimensions

<b>Cable Length</b>	914.4 m   3000 ft
<b>Diameter Over Insulated Conductor</b>	0.889 mm   0.035 in
<b>Diameter Over Jacket, nominal</b>	7.239 mm   0.285 in
<b>Jacket Thickness</b>	1.295 mm   0.051 in
<b>Conductor Gauge, singles</b>	23 AWG

## Cross Section Drawing



## Electrical Specifications

<b>dc Resistance Unbalance, maximum</b>	4 %
<b>dc Resistance, maximum</b>	7.61 ohms/100 m   2.32 ohms/100 ft
<b>Dielectric Strength, minimum</b>	1500 Vac   2500 Vdc
<b>LP (Limited Power) Rating</b>	0.6 A
<b>Mutual Capacitance at Frequency</b>	6.0 nF/100 m @ 1 kHz
<b>Nominal Velocity of Propagation (NVP)</b>	66 %
<b>Operating Frequency, maximum</b>	500 MHz
<b>Operating Voltage, maximum</b>	80 V
<b>Remote Powering</b>	Fully complies with the recommendations set forth by IEEE 802.3bt (Type 4) for the safe delivery of power over LAN cable when installed according to ISO/IEC 14763-2, CENELEC EN 50174-1, CENELEC EN 50174-2 or TIA TSB-184-A
<b>Safety Voltage Rating</b>	300 V

## Electrical Cable Performance

<b>CS</b>	CommScope	<b>NEXT</b>	Near End Crosstalk (dB/100m)
<b>STD</b>	Refers to the standard value listed under Transmission Standards in the Electrical Specifications above	<b>PSNEXT</b>	Power Sum Near End Crosstalk (db/100m)
<b>TYP</b>	Typical Electrical Performance	<b>ACRF</b>	Attenuation to Crosstalk Ratio - Far End (dB/100m)
<b>IL</b>	Insertion Loss (dB/100m)	<b>RL</b>	Return Loss (dB)
<b>ACR</b>	Attenuation to Crosstalk Ratio (dB/100m)	<b>ELTCTL</b>	Equal Level Transverse Conversion Transfer Loss (dB/100m)
<b>PSACR</b>	Power Sum Attenuation to Crosstalk Ratio (dB/100m)		
<b>PSACRF</b>	Power Sum Attenuation to Crosstalk Ratio - Far End (dB/100m)		
<b>TCL</b>	Transverse Conversion Loss (dB/100m)		

Freq. MHz	IL		NEXT		ACR		PSNEXT		PSACR		ACRF		PSACRF		RL	
	STD	TYP	STD	TYP	STD	TYP	STD	TYP	STD	TYP	STD	TYP	STD	TYP	STD	TYP
1	2.1	1.8	74.3	90.6	72.2	88.8	72.3	88.3	70.2	86.5	67.8	82.1	64.8	80.3	20	32.2
4	3.8	3.6	65.3	82.4	61.5	78.8	63.3	80.2	59.5	76.6	55.8	70.1	52.8	68.4	23	33.9
8	5.3	5.1	60.8	77.6	55.4	72.5	58.8	75.8	53.4	70.7	49.7	64.1	46.7	62.3	24.5	36.7
10	5.9	5.7	59.3	76.4	53.4	70.7	57.3	74.4	51.4	68.7	47.8	62.2	44.8	60.4	25	37.7
16	7.5	7.3	56.2	73.1	48.8	65.9	54.2	71.3	46.8	64	43.7	58.2	40.7	56.4	25	38.7
20	8.4	8.1	54.8	71.5	46.4	63.4	52.8	69.7	44.4	61.6	41.8	56.4	38.8	54.5	25	38.7
25	9.4	9.1	53.3	70.2	44	61.1	51.3	68.3	42	59.2	39.8	54.5	36.8	52.6	24.3	35.5
31.25	10.5	10.2	51.9	68.6	41.4	58.4	49.9	66.7	39.4	56.5	37.9	52.7	34.9	50.7	23.6	37.2
62.5	15	14.6	47.4	64.2	32.4	49.6	45.4	62.3	30.4	47.7	31.9	46.6	28.9	44.7	21.5	34.6
100	19.1	18.6	44.3	60.8	25.2	42.1	42.3	59	23.2	40.3	27.8	42.5	24.8	40.5	20.1	30.3
155	24.1	23.4	41.4	58.4	17.4	35	39.4	56.4	15.4	33	24	38.9	21	37	18.8	30.8
200	27.6	26.8	39.8	56	12.2	29.2	37.8	54.2	10.2	27.4	21.8	36.6	18.8	34.6	18	30
250	31.1	30.1	38.3	54.3	7.3	24.2	36.3	52.5	5.3	22.3	19.8	34.6	16.8	32.6	17.3	30.5
300	34.3	33.1	37.1	53.1	2.9	19.9	35.1	51.2	0.9	18.1	18.3	33.1	15.3	31.2	16.8	31.1
350	37.2	36	36.1	51.8	-1.1	15.8	34.1	49.9	-3.1	13.9	16.9	31.9	13.9	29.9	16.3	31.7
400	40.1	38.8	35.3	50.8	-4.8	12	33.3	48.8	-6.8	10	15.8	30.6	12.8	28.6	15.9	31.5
500	45.3	43.6	33.8	47.9	-11.4	4.3	31.8	45.8	-13.4	2.2	13.8	28.7	10.8	26.7	15.2	32
550		43.8		48		4.1		45.9		2		28.6		26.7		31.9
650		50.2		43.5		-6.7		41.5		-8.8		25.7		23.5		25.3

## Material Specifications

<b>Conductor Material</b>	Bare copper
<b>Insulation Material</b>	FEP
<b>Jacket Material</b>	PVC
<b>Separator Material</b>	Polyolefin

## Mechanical Specifications

**Pulling Tension, maximum** 11.34 kg | 25 lb

## Environmental Specifications

# UN874041684/30 | CS44P VLT C6A 4/23 U/UTP RL 3KFT

---

<b>Installation temperature</b>	0 °C to +60 °C (+32 °F to +140 °F)
<b>Operating Temperature</b>	-20 °C to +75 °C (-4 °F to +167 °F)
<b>Environmental Space</b>	Plenum
<b>Temperature Rating, ETL</b>	105 °C   221 °F
<b>Flame Test Method</b>	CMP/FT6   NEC Article 800   NFPA 262   UL 444   UL 910
<b>Smoke Test Method</b>	CMP/FT6

## Packaging and Weights

<b>Cable weight</b>	63.098 kg/km   42.4 lb/kft
<b>Packaging Type</b>	Reel

## Regulatory Compliance/Certifications

<b>Agency</b>	<b>Classification</b>
ISO 9001:2015	Designed, manufactured and/or distributed under this quality management system

