

095144-000 Revision K, May 2016

Fiberglass Omni Antenna

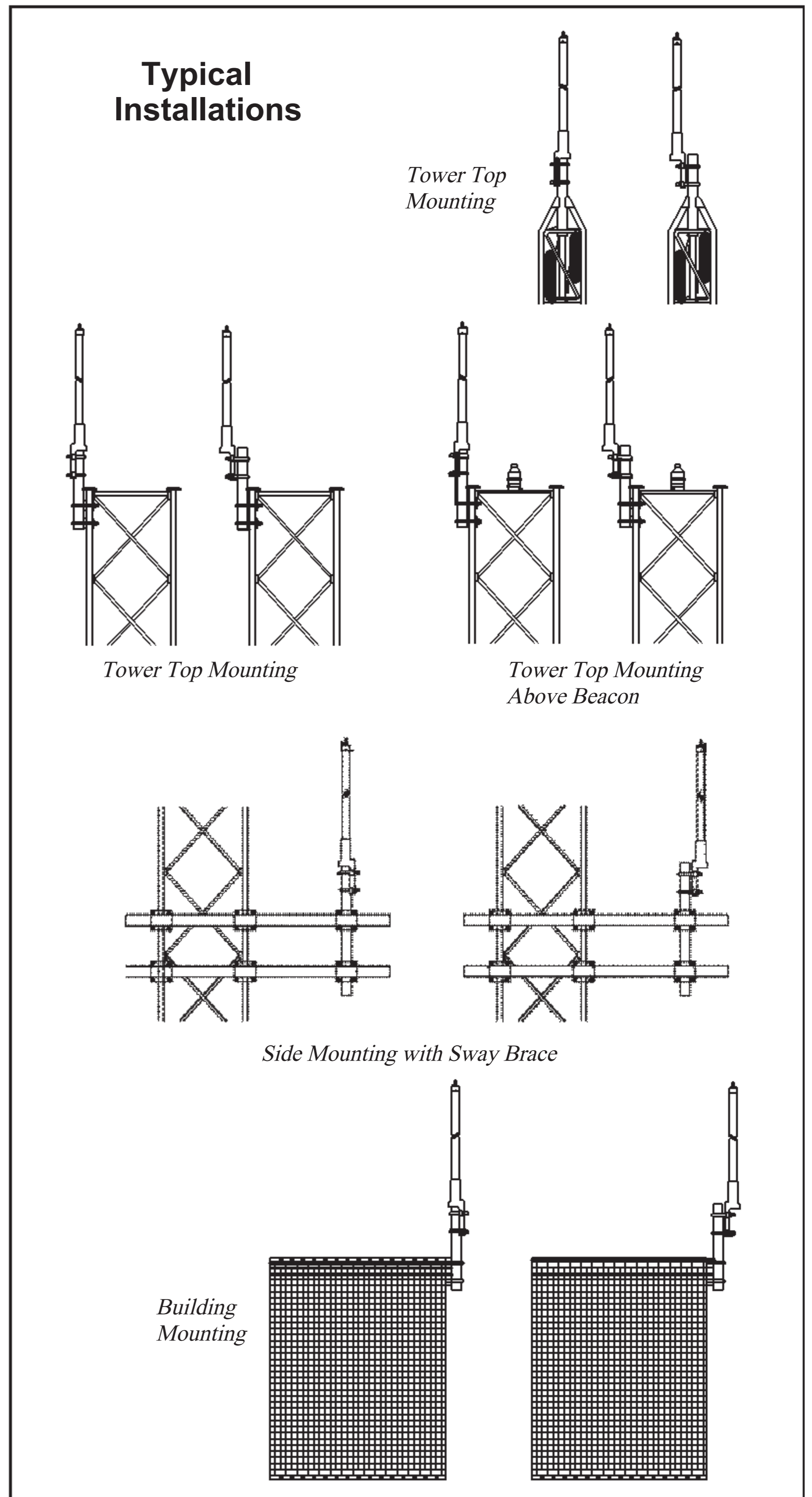
GENERAL INFORMATION

- These broadband omnidirectional antennas are equipped with an integral cast mounting and includes V-bolts, nuts, and washers.
- These antennas are designed for mounting at the top of the tower. The customer and installer should consider the mounting configuration, since proximity to any conductor may affect the performance of the antenna. Antennas may be mounted to a 1-1/2 or 2 inch pipe.
- These antennas are grounded through the mounting cast. A clean ground on the tower leg or support pipe is required where the antenna is attached.

INSTALLATION NOTES

1. Although the antenna has been quality checked, the customer and installer should examine the antenna and kit to prevent possible installation or application problems.
2. Antenna should be installed plumb and "V" bolts should be tightened with a 9/16 inch hand wrench only.
3. After securing connectors by hand only, carefully weatherproof all connections. Be sure to cover all cracks and the outer jacket of the transmission line. Failure to waterproof the connection could result in improper operation of the antenna.
4. Do not plug up the drain hole next to the connector.
5. While installing the antenna in the upright position, be sure to unplug the bottom drain hole. For the inverted position, remove the plastic plug (with O-ring) from the top cap and insert it into the bottom drain hole.

Caution: Models with electrical downtilt capabilities must *not* be mounted in the inverted position. Doing so will cause the beamtilt to be incorrectly directed *upward*.



SAFETY NOTICE

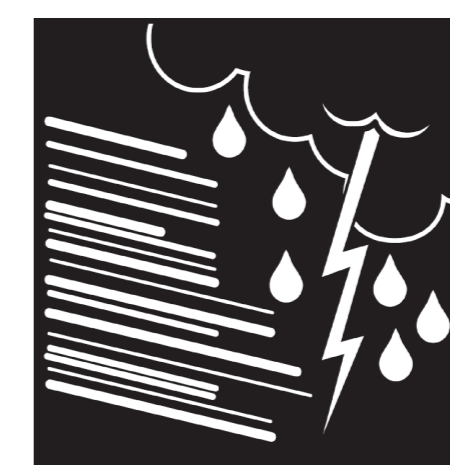
The installation, maintenance, or removal of an antenna requires qualified, experienced personnel. CommScope installation instructions are written for such installation personnel. Antenna systems should be inspected once a year by qualified personnel to verify proper installation, maintenance, and condition of equipment.

CommScope disclaims any liability or responsibility for the results of improper or unsafe installation practices.

It is recommended that transmit power be turned off when the field installation is performed. Follow all applicable safety precautions as shown on this page.



Do not install near power lines. Power lines, telephone lines, and guy wires look the same. Assume any wire or line can electrocute you.



Do not install on a wet or windy day or when lightning or thunder is in the area. Do not use metal ladder.



Wear shoes with rubber soles and heels. Wear protective clothing including a long-sleeved shirt and rubber gloves.