

Installation Instructions



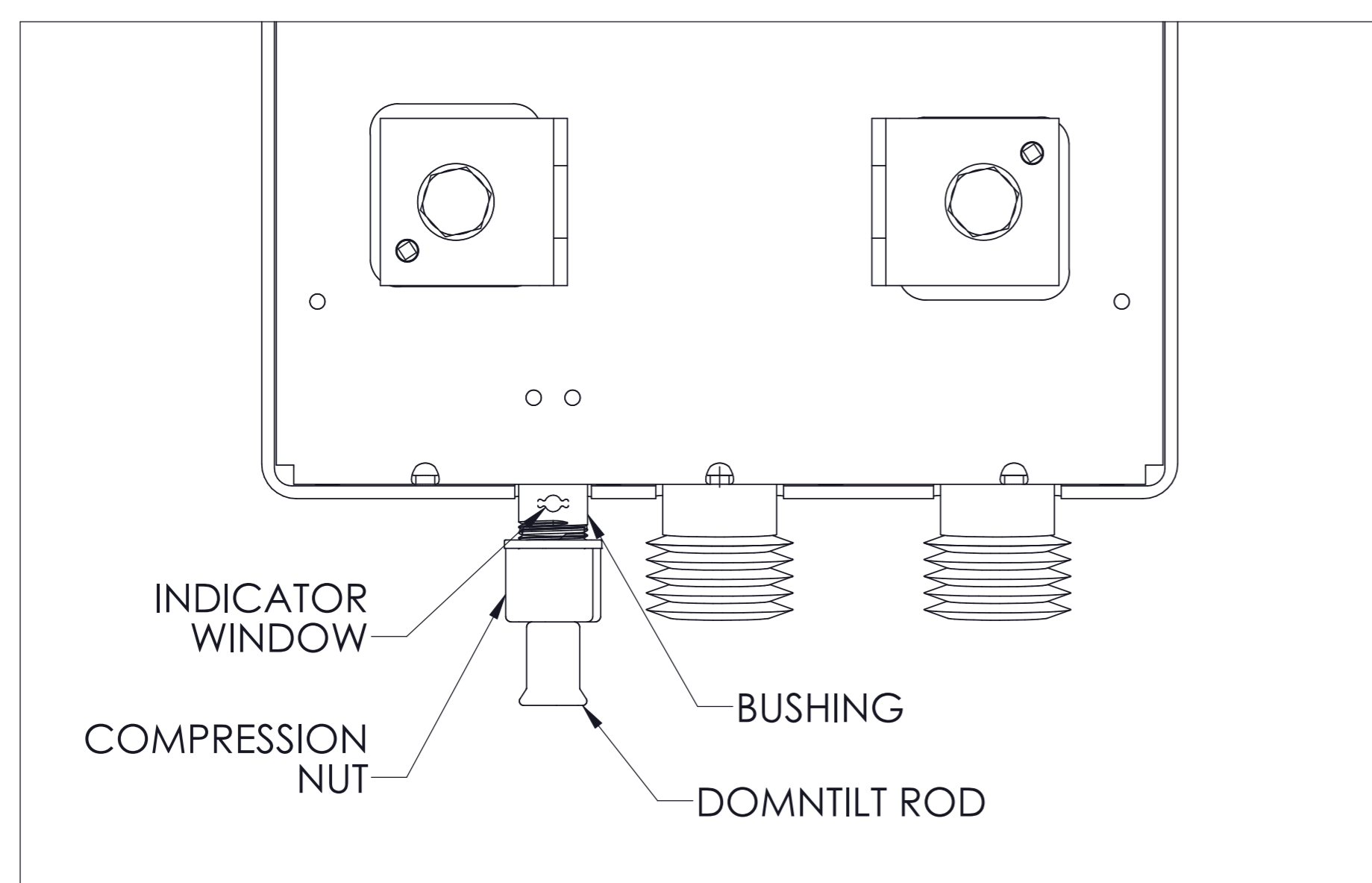
Variable Electrical Tilts

Bulletin 095537-000 • Revision D • October 2012
Page 1 of 1

Andrew Institute offers installation training.

GENERAL INFORMATION

Certain antenna models are equipped with a mechanism for field adjustment of the electrical tilt angle.



Andrew style antennas; VTM & VT

Figure 1. Compression Nut- Locking Variable Electrical Tilt Mechanism.

Compression Nut-Locking Variable Electrical Tilt Mechanism with Downtilt Rod (Figure 1).

1. Rotate the compression nut two or three revolutions to release the compression on the downtilt rod. Removing the nut is not necessary.
2. Position the downtilt rod so that the desired angle shows through the indicator window.
Note: The number in the indicator window corresponds to the degree of electrical downtilt.
3. Rotate the compression nut clockwise to lock the downtilt rod in place. The nut should only be hand tight.

NOTICE

The installation, maintenance, or removal of an antenna requires qualified, experienced personnel. Andrew installation instructions are written for such installation personnel. Antenna systems should be inspected once a year by qualified personnel to verify proper installation, maintenance, and condition of equipment.

Andrew disclaims any liability or responsibility for the results of improper or unsafe installation practices.



Do not install near power lines. Power lines, telephone lines, and guy wires look the same. Assume any wire or line can electrocute you.



Do not install on a wet or windy day or when lightning or thunder is in the area. Do not use metal ladder.



Wear shoes with rubber soles and heels. Wear protective clothing including a long-sleeved shirt and rubber gloves.