

# CCVVPX308.11R2



8-port sector antenna, 4x 790–960 and 4x 1695–2690 MHz, 65° HPBW, 4x RET with manual override. Bands cascaded SRET designed for Site-Sharing purpose (two Operators / Primaries operating their assigned RET's independently)

- The RET interface comprises two pairs of AISG input/output ports, each pair controlling “one side” of the antenna independently: one pair for the left-hand bands 1 and 3 (R1, Y1); one pair for the right-hand bands 2 and 4 (R2, Y2)
- Integrated Internal Remote Electrical Tilt (RET), with independent control of electrical tilt with manual override on all arrays
- All Internal RET actuators on each antenna side are connected in “Cascaded SRET” configuration

## OBSOLETE

This product was discontinued on: **March 27, 2020**

### Replaced By:

RRZ4TT-65D-R8	16-port sector antenna, 4x 694–960, 8x 1427-2690 and 4x 1427–2690 MHz, 65° HPBW, 4x RET
RRZZ-65B-R4	8-port sector antenna, 4x 694–960 and 4x 1427–2690 MHz, 65° HPBW, 4x RET
RRZZTT-65A-R6	12-port sector antenna, 4x 694–960, 4x 1427-2180 and 4x 2490–2690 MHz, 65° HPBW, 6x RET
RRZZTT-65B-R6	12-port sector antenna, 4x 694–960, 4x 1427-2180 and 4x 2490–2690 MHz, 65° HPBW, 6x RET

## General Specifications

<b>Antenna Type</b>	Sector
<b>Band</b>	Multiband
<b>Color</b>	Light Gray (RAL 7035)
<b>Grounding Type</b>	RF connector inner conductor and body grounded to reflector and mounting bracket
<b>Performance Note</b>	Outdoor usage   Wind loading figures are validated by wind tunnel measurements described in white paper WP-112534-EN
<b>Radome Material</b>	Fiberglass, UV resistant
<b>Radiator Material</b>	Low loss circuit board
<b>Reflector Material</b>	Aluminum
<b>RF Connector Interface</b>	7-16 DIN Female
<b>RF Connector Location</b>	Bottom
<b>RF Connector Quantity, high band</b>	4

# CCVVPX308.11R2

<b>RF Connector Quantity, low band</b>	4
<b>RF Connector Quantity, total</b>	8

## Remote Electrical Tilt (RET) Information

<b>RET Interface</b>	8-pin DIN Female   8-pin DIN Male
<b>RET Interface, quantity</b>	2 female   2 male
<b>Input Voltage</b>	10–30 Vdc
<b>Internal RET</b>	High band (2)   Low band (2)
<b>Power Consumption, idle state, maximum</b>	2 W
<b>Power Consumption, normal conditions, maximum</b>	13 W
<b>Protocol</b>	3GPP/AISG 2.0 (Single RET)

## Dimensions

<b>Width</b>	498 mm   19.606 in
<b>Depth</b>	197 mm   7.756 in
<b>Length</b>	2100 mm   82.677 in
<b>Net Weight, without mounting kit</b>	39 kg   85.98 lb

## Array Layout



Array	Freq (MHz)	Conns	RET (SRET)	AISG RET UID
R1	790-960	1-2	1	ARxxxxxxxxxxxxxxxxx1
R2	790-960	3-4	2	ARxxxxxxxxxxxxxxxxxX2
Y1	1695-2690	5-6	3	ARxxxxxxxxxxxxxxxxx3
Y2	1695-2690	7-8	4	ARxxxxxxxxxxxxxxxxx4

Left Bottom Right

(Sizes of colored boxes are not true depictions of array sizes)

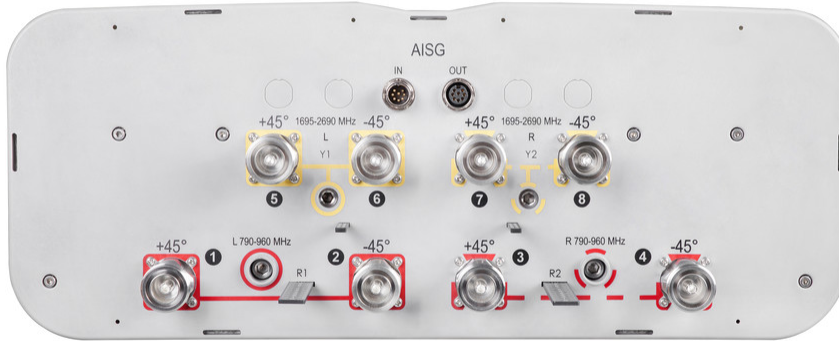
## Port Configuration

# CCVVPX308.11R2

---



# CCVVPX308.11R2



## Electrical Specifications

<b>Impedance</b>	50 ohm
<b>Operating Frequency Band</b>	1695 – 2690 MHz   790 – 960 MHz
<b>Polarization</b>	±45°

## Electrical Specifications

Frequency Band, MHz	790–862	880–960	1695–1880	1850–1990	1920–2180	2300–2500	2500–2690
<b>Gain, dBi</b>	14.9	15.6	16.6	16.8	17.4	18.1	18.2
<b>Beamwidth, Horizontal, degrees</b>	74	63	63	66	68	62	63
<b>Beamwidth, Vertical, degrees</b>	11.3	10.2	7.6	7	6.6	5.6	5.2
<b>Beam Tilt, degrees</b>	0–10	0–10	0–10	0–10	0–10	0–10	0–10
<b>USLS (First Lobe), dB</b>	18	18	18	18	18	18	18
<b>Front-to-Back Ratio at 180°, dB</b>	35	35	34	38	40	39	40
<b>Isolation, Cross Polarization, dB</b>	28	28	28	28	28	28	28
<b>Isolation, Inter-band, dB</b>	28	28	28	28	28	28	28
<b>VSWR   Return loss, dB</b>	1.5 14.0	1.5 14.0	1.5 14.0	1.5 14.0	1.5 14.0	1.5 14.0	1.5 14.0
<b>PIM, 3rd Order, 2 x 20 W, dBc</b>	-150	-150	-150	-150	-150	-150	-150

# CCVVPX308.11R2

<b>Input Power per Port, maximum, watts</b>	300	300	250	250	250	250	250
---	-----	-----	-----	-----	-----	-----	-----

## Electrical Specifications, BASTA

<b>Frequency Band, MHz</b>	<b>790–862</b>	<b>880–960</b>	<b>1695–1880</b>	<b>1850–1990</b>	<b>1920–2180</b>	<b>2300–2500</b>	<b>2500–2690</b>
<b>Gain by all Beam Tilts, average, dBi</b>	14.7	15.4	16.4	16.5	16.9	17.8	17.9
<b>Gain by all Beam Tilts Tolerance, dB</b>	±0.5	±0.3	±0.4	±0.6	±0.7	±0.5	±0.5
<b>Gain by Beam Tilt, average, dBi</b>	0° 14.7 5° 14.7 10° 14.6	0° 15.5 5° 15.5 10° 15.4	0° 16.4 5° 16.4 10° 16.4	0° 16.5 5° 16.5 10° 16.4	0° 16.9 5° 16.9 10° 16.9	0° 17.9 5° 17.9 10° 17.7	0° 17.8 5° 17.9 10° 17.9
<b>Beamwidth, Horizontal Tolerance, degrees</b>	±4.2	±4.7	±3.3	±7.3	±4.4	±3.4	±2.6
<b>Beamwidth, Vertical Tolerance, degrees</b>	±0.5	±0.4	±0.5	±0.3	±0.5	±0.2	±0.2
<b>USLS, beampeak to 20° above beampeak, dB</b>	18	18	18	18	18	17	18
<b>Front-to-Back Total Power at 180° ± 30°, dB</b>	24	25	27	31	30	31	32
<b>CPR at Boresight, dB</b>	20	18	20	20	18	16	18
<b>CPR at Sector, dB</b>	11	9	9	11	12	11	11

## Mechanical Specifications

<b>Wind Loading @ Velocity, frontal</b>	803.0 N @ 150 km/h (180.5 lbf @ 150 km/h)
<b>Wind Loading @ Velocity, lateral</b>	275.0 N @ 150 km/h (61.8 lbf @ 150 km/h)
<b>Wind Loading @ Velocity, maximum</b>	1,040.0 N @ 150 km/h (233.8 lbf @ 150 km/h)
<b>Wind Loading @ Velocity, rear</b>	661.0 N @ 150 km/h (148.6 lbf @ 150 km/h)
<b>Wind Speed, maximum</b>	200 km/h (124 mph)

## Packaging and Weights

<b>Width, packed</b>	565 mm   22.244 in
<b>Depth, packed</b>	312 mm   12.283 in
<b>Length, packed</b>	2286 mm   90 in
<b>Weight, gross</b>	60 kg   132.277 lb

## Regulatory Compliance/Certifications

<b>Agency</b>	<b>Classification</b>
CE	Compliant with the relevant CE product directives

# CCVVPX308.11R2

---

ISO 9001:2015

Designed, manufactured and/or distributed under this quality management system



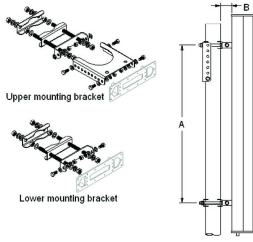
## Included Products

- T-029-GL-E – Adjustable Tilt Pipe Mounting Kit for 2.362"-4.5" (60-115mm) OD round members for panel antennas. Includes 2 clamp sets.

## \* Footnotes

**Performance Note** Severe environmental conditions may degrade optimum performance

# T-029-GL-E



Adjustable Tilt Pipe Mounting Kit for 2.362"-4.5" (60-115mm) OD round members for panel antennas. Includes 2 clamp sets.

## Product Classification

**Product Type** Adjustable tilt mounting kit

## General Specifications

**Application** Outdoor

**Color** Silver

## Dimensions

**Compatible Length, maximum** 2850 mm | 112.205 in

**Compatible Length, minimum** 1500 mm | 59.055 in

**Compatible Diameter, maximum** 115 mm | 4.528 in

**Compatible Diameter, minimum** 60 mm | 2.362 in

**Antenna-to-Pipe Distance** 85 mm | 3.346 in

**Bracket-to-Bracket Distance** 1400 mm | 55.118 in

**Weight, net** 6 kg | 13.228 lb

## Material Specifications

**Material Type** Galvanized steel

## Mechanical Specifications

**Mechanical Tilt** 0°-8°

## Packaging and Weights

**Included** Brackets | Hardware

**Packaging quantity** 1

## Regulatory Compliance/Certifications

Agency	Classification
CE	Compliant with the relevant CE product directives

# T-029-GL-E

---

CHINA-ROHS	Below maximum concentration value
ISO 9001:2015	Designed, manufactured and/or distributed under this quality management system
REACH-SVHC	Compliant as per SVHC revision on <a href="http://www.commscope.com/ProductCompliance">www.commscope.com/ProductCompliance</a>
ROHS	Compliant
UK-ROHS	Compliant

