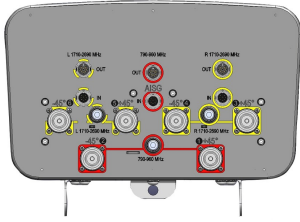


# CVVPX308.10R3



6-port sector antenna, 2x 790–960 and 4x 1710–2690 MHz, 65° HPBW, 3x RET with manual override.

- Integrated Internal Remote Electrical Tilt (RET), with independent control of electrical tilt with manual override on all arrays

## OBSOLETE

This product was discontinued on: March 27, 2020

## General Specifications

<b>Antenna Type</b>	Sector
<b>Band</b>	Multiband
<b>Grounding Type</b>	RF connector inner conductor and body grounded to reflector and mounting bracket
<b>Performance Note</b>	Outdoor usage
<b>Radome Material</b>	ASA, UV stabilized
<b>Radiator Material</b>	Low loss circuit board
<b>Reflector Material</b>	Aluminum
<b>RF Connector Interface</b>	7-16 DIN Female
<b>RF Connector Location</b>	Bottom
<b>RF Connector Quantity, high band</b>	4
<b>RF Connector Quantity, low band</b>	2
<b>RF Connector Quantity, total</b>	6

## Remote Electrical Tilt (RET) Information

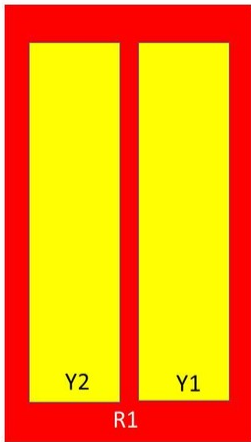
<b>RET Interface</b>	8-pin DIN Female   8-pin DIN Male
<b>RET Interface, quantity</b>	3 female   3 male
<b>Input Voltage</b>	10–30 Vdc
<b>Internal RET</b>	High band (2)   Low band (1)
<b>Power Consumption, idle state, maximum</b>	2 W
<b>Power Consumption, normal conditions, maximum</b>	13 W
<b>Protocol</b>	3GPP/AISG 2.0 (Single RET)

# CVVPX308.10R3

## Dimensions

<b>Width</b>	354 mm   13.937 in
<b>Depth</b>	210 mm   8.268 in
<b>Length</b>	2025 mm   79.724 in
<b>Net Weight, without mounting kit</b>	26.1 kg   57.541 lb

## Array Layout



Array	Freq (MHz)	Conns	RET (SRET)	AISG RET UID
R1	790-960	1-2	1	ARxxxxxxxxxxxxxxxxx1
Y1	1710-2690	3-4	2	ARxxxxxxxxxxxxxxxxx2
Y2	1710-2690	5-6	3	ARxxxxxxxxxxxxxxxxx3

Left Right  
Bottom

(Sizes of colored boxes are not true depictions of array sizes)

## Electrical Specifications

<b>Impedance</b>	50 ohm
<b>Operating Frequency Band</b>	1710 – 2690 MHz   790 – 960 MHz
<b>Polarization</b>	±45°

## Electrical Specifications

Frequency Band, MHz	790–890	890–960	1710–1920	1920–2180	2300–2690
<b>Gain, dBi</b>	15.5	15.9	16.5	17.1	17.8
<b>Beamwidth, Horizontal, degrees</b>	65	64	61	60	62.6
<b>Beamwidth, Vertical, degrees</b>	11.2	10.3	8.3	7.4	5.9
<b>Beam Tilt, degrees</b>	0–10	0–10	0–10	0–10	0–10
<b>USLS (First Lobe), dB</b>	18	18	18	18	18
<b>Front-to-Back Ratio at 180°,</b>	27	28	30	35	33

# CVVPX308.10R3

dB

<b>Isolation, Cross Polarization, dB</b>	25	25	25	25	25
<b>Isolation, Inter-band, dB</b>	30	30	30	30	30
<b>VSWR   Return loss, dB</b>	1.43   15.0	1.43   15.0	1.5   14.0	1.5   14.0	1.5   14.0
<b>PIM, 3rd Order, 2 x 20 W, dBc</b>	-150	-150	-150	-150	-150
<b>Input Power per Port, maximum, watts</b>	300	300	250	250	250

## Electrical Specifications, BASTA

<b>Frequency Band, MHz</b>	<b>790–890</b>	<b>890–960</b>	<b>1710–1920</b>	<b>1920–2180</b>	<b>2300–2690</b>
<b>Gain by all Beam Tilts, average, dBi</b>	15.3	15.7	16.2	16.7	17.4
<b>Gain by all Beam Tilts Tolerance, dB</b>	±0.3	±0.2	±0.4	±0.3	±0.5
<b>Gain by Beam Tilt, average, dBi</b>	0°   15.4 5°   15.3 10°   15.2	0°   15.7 5°   15.7 10°   15.6	0°   16.3 5°   16.2 10°   16.3	0°   16.7 5°   16.7 10°   16.7	0°   17.6 5°   17.5 10°   17.1
<b>Beamwidth, Horizontal Tolerance, degrees</b>	±1.4	±1.3	±2.5	±2.1	±6.1
<b>Beamwidth, Vertical Tolerance, degrees</b>	±0.6	±0.3	±0.5	±0.6	±0.5
<b>USLS, beampeak to 20° above beampeak, dB</b>	18	18	18	18	18
<b>Front-to-Back Total Power at 180° ± 30°, dB</b>	25	26	23	25	27
<b>CPR at Boresight, dB</b>	17	15	21	20	17
<b>CPR at Sector, dB</b>	9	9	7	5	7

## Mechanical Specifications

<b>Wind Loading @ Velocity, frontal</b>	904.0 N @ 150 km/h (203.2 lbf @ 150 km/h)
<b>Wind Loading @ Velocity, lateral</b>	348.0 N @ 150 km/h (78.2 lbf @ 150 km/h)
<b>Wind Loading @ Velocity, rear</b>	929.0 N @ 150 km/h (208.8 lbf @ 150 km/h)
<b>Wind Speed, maximum</b>	241 km/h (150 mph)

## Packaging and Weights

<b>Width, packed</b>	420 mm   16.535 in
<b>Depth, packed</b>	320 mm   12.598 in
<b>Length, packed</b>	2210 mm   87.008 in

# CVVPX308.10R3

---

**Weight, gross**

43 kg | 94.799 lb

## Regulatory Compliance/Certifications

<b>Agency</b>	<b>Classification</b>
CE	Compliant with the relevant CE product directives
CHINA-ROHS	Below maximum concentration value
ISO 9001:2015	Designed, manufactured and/or distributed under this quality management system
REACH-SVHC	Compliant as per SVHC revision on <a href="http://www.commscope.com/ProductCompliance">www.commscope.com/ProductCompliance</a>
ROHS	Compliant
UK-ROHS	Compliant



## Included Products

- T-029-GL-E – Adjustable Tilt Pipe Mounting Kit for 2.362"-4.5" (60-115mm) OD round members for panel antennas. Includes 2 clamp sets.

## \* Footnotes

**Performance Note** Severe environmental conditions may degrade optimum performance