

639588 Revision E, May 2016

## dc 2.1 Bias Tee Kit ATBTK-FM and ATBTK-MF Series

### GENERAL INFORMATION

- The ATC300-1000/2000 controller feeds voltage and control commands through SMB ports into a dc 2.1 Bias Tee for connectivity over coaxial cables to antenna line devices.
- The dc 2.1 Bias Tee Kit provides all the parts needed to connect the ATC300-1000/2000 Controller to a coaxial cable.

### INCLUDED PARTS

The dc 2.1 Bias Tee Kit includes the parts detailed in Figure 1.

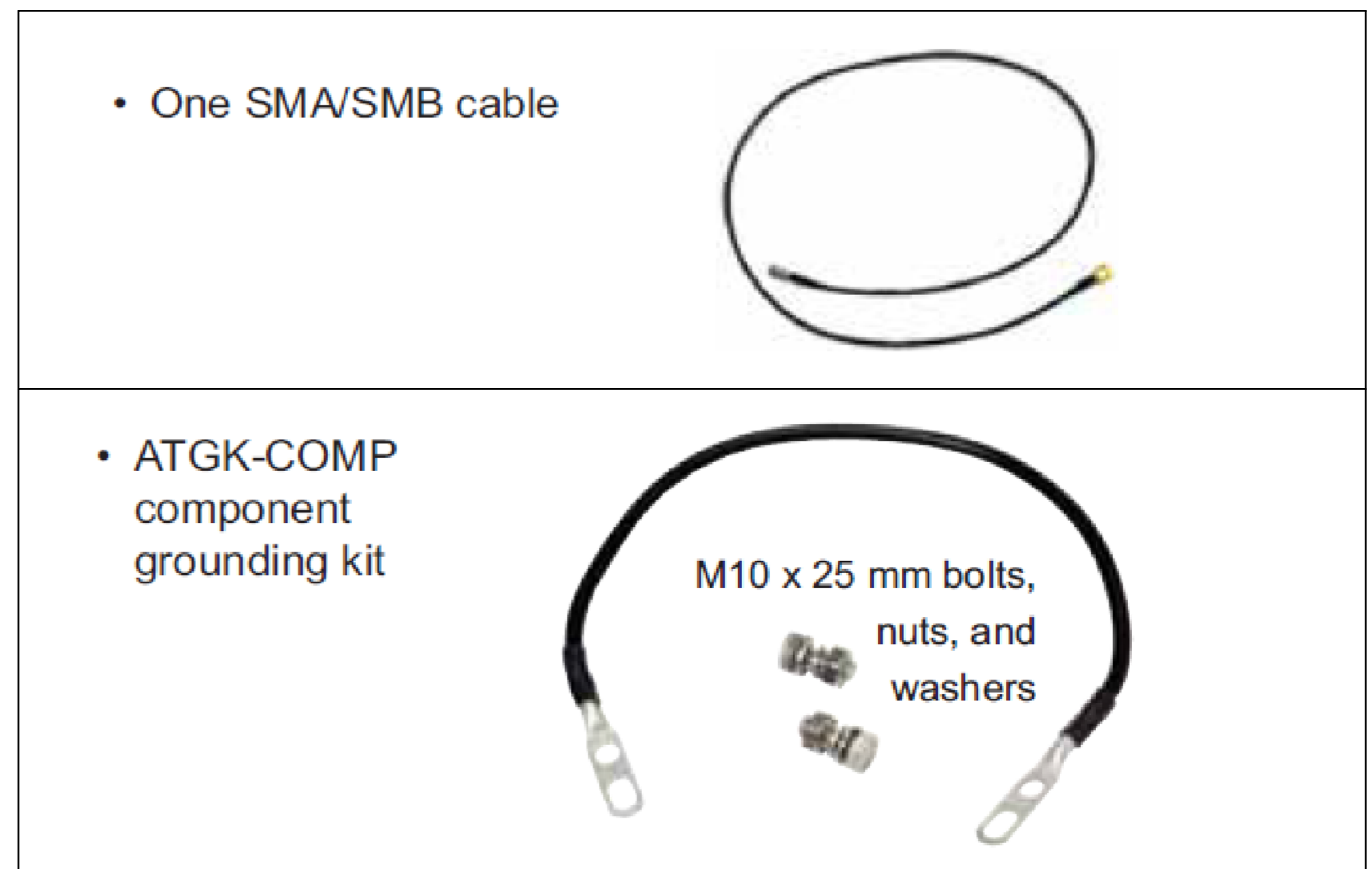
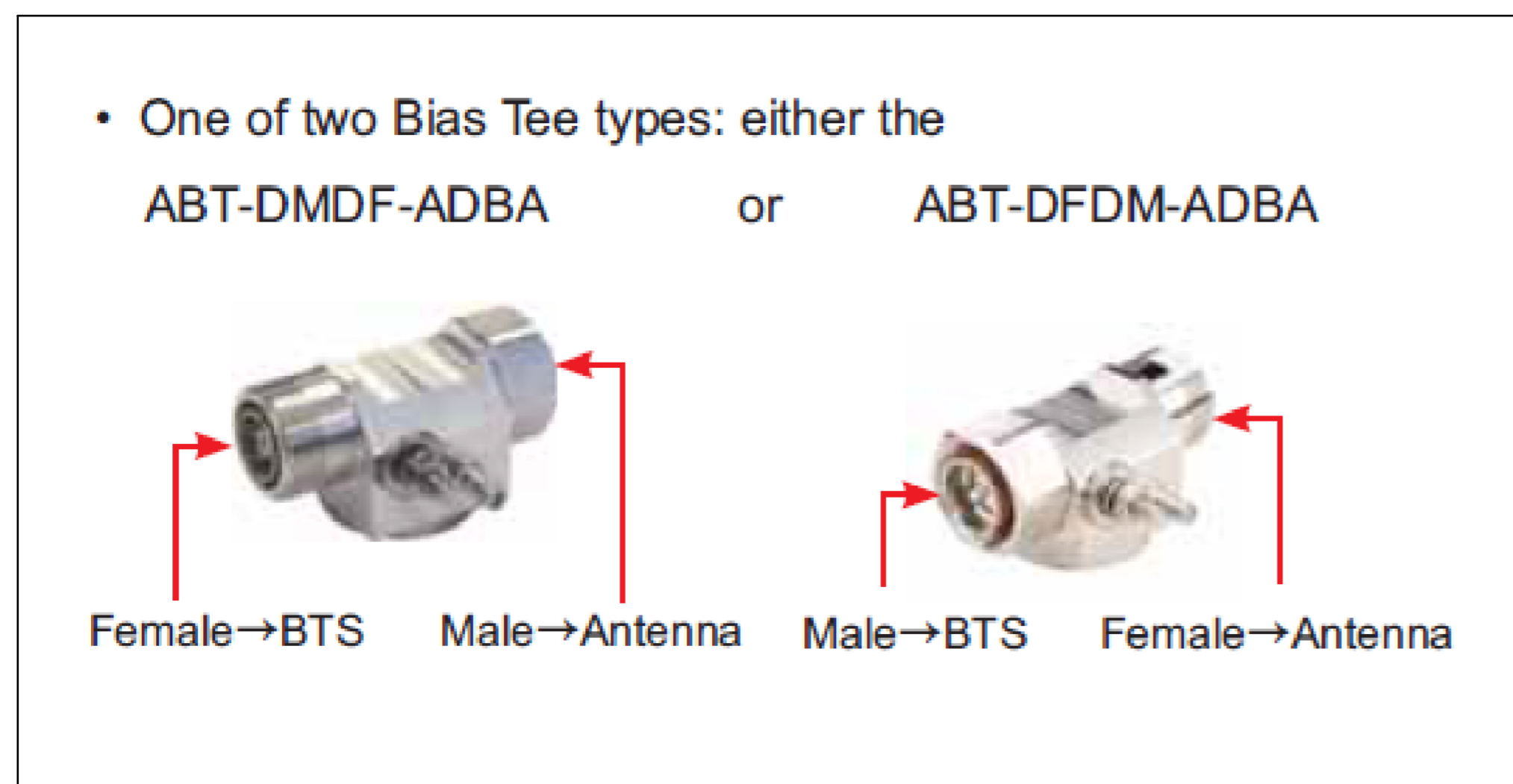


Figure 1. dc 2.1 Bias Tee Kit.

(continued on page 2)

### **WARRANTY NOTICE**

Proper installation procedures must be followed when installing and operating RET equipment. Failure to assure installations are done properly by trained installation personnel and to follow procedures discussed in this bulletin may cause warranty for such products to be void.

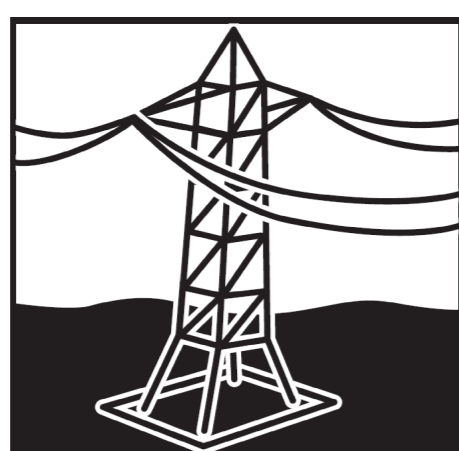
**CommScope requires pretesting actuators on the ground prior to installation, using the CommScope portable controller and the latest version of the controller software** (available online at [www.commscope.com/Resources/Software](http://www.commscope.com/Resources/Software)). This will verify proper actuator functionality and also ensure that the latest available actuator firmware release is installed on the actuator. Failure to conduct pre-test and pre-installation procedures defined by CommScope will void warranty.

**Unauthorized removal of a protective shroud to replace actuators voids the CommScope warranty.**

### **SAFETY NOTICE**

The installation, maintenance, or removal of an antenna requires qualified, experienced personnel. CommScope installation instructions are written for such installation personnel. Antenna systems should be inspected once a year by qualified personnel to verify proper installation, maintenance, and condition of equipment.

CommScope disclaims any liability or responsibility for the results of improper or unsafe installation practices. It is recommended that transmit power be turned off when the field installation is performed. Follow all applicable safety precautions as shown on this page.



Do not install near power lines. Power lines, telephone lines, and guy wires look the same. Assume any wire or line can electrocute you.



Do not install on a wet or windy day or when lightning or thunder is in the area. Do not use metal ladder.



Wear shoes with rubber soles and heels. Wear protective clothing including a long-sleeved shirt and rubber gloves.

(Continued from page 1)

## INSTALLATION PROCEDURE

1. Installation of the ATBTK-FM is shown below. Follow steps 1 through 6 in Figure 2.

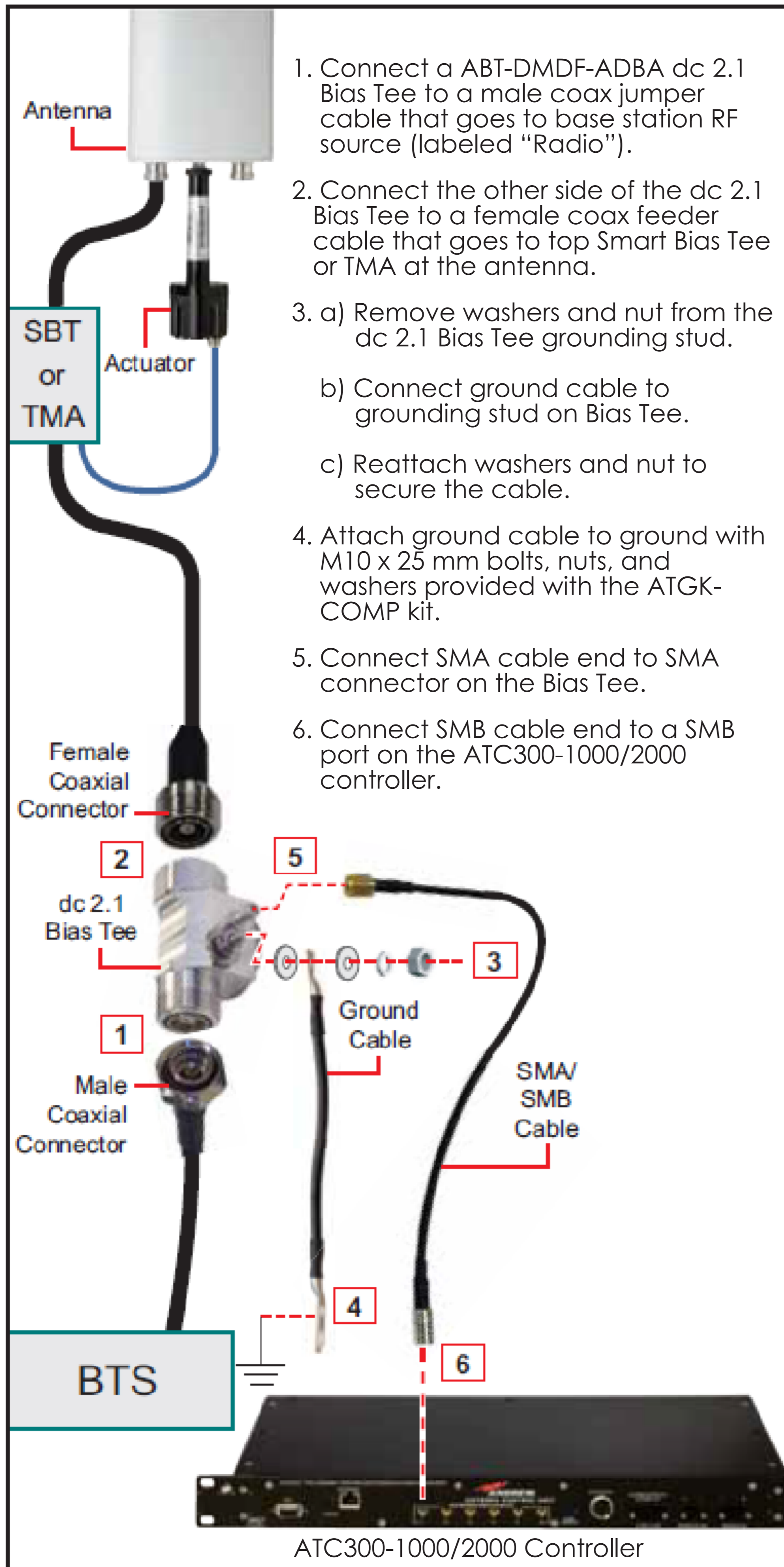


Figure 2. Setting Up The ATBTK-FM In A RET System.

2. Installation of the ATBTK-MF is shown below. Follow steps 1 through 6 in Figure 3.

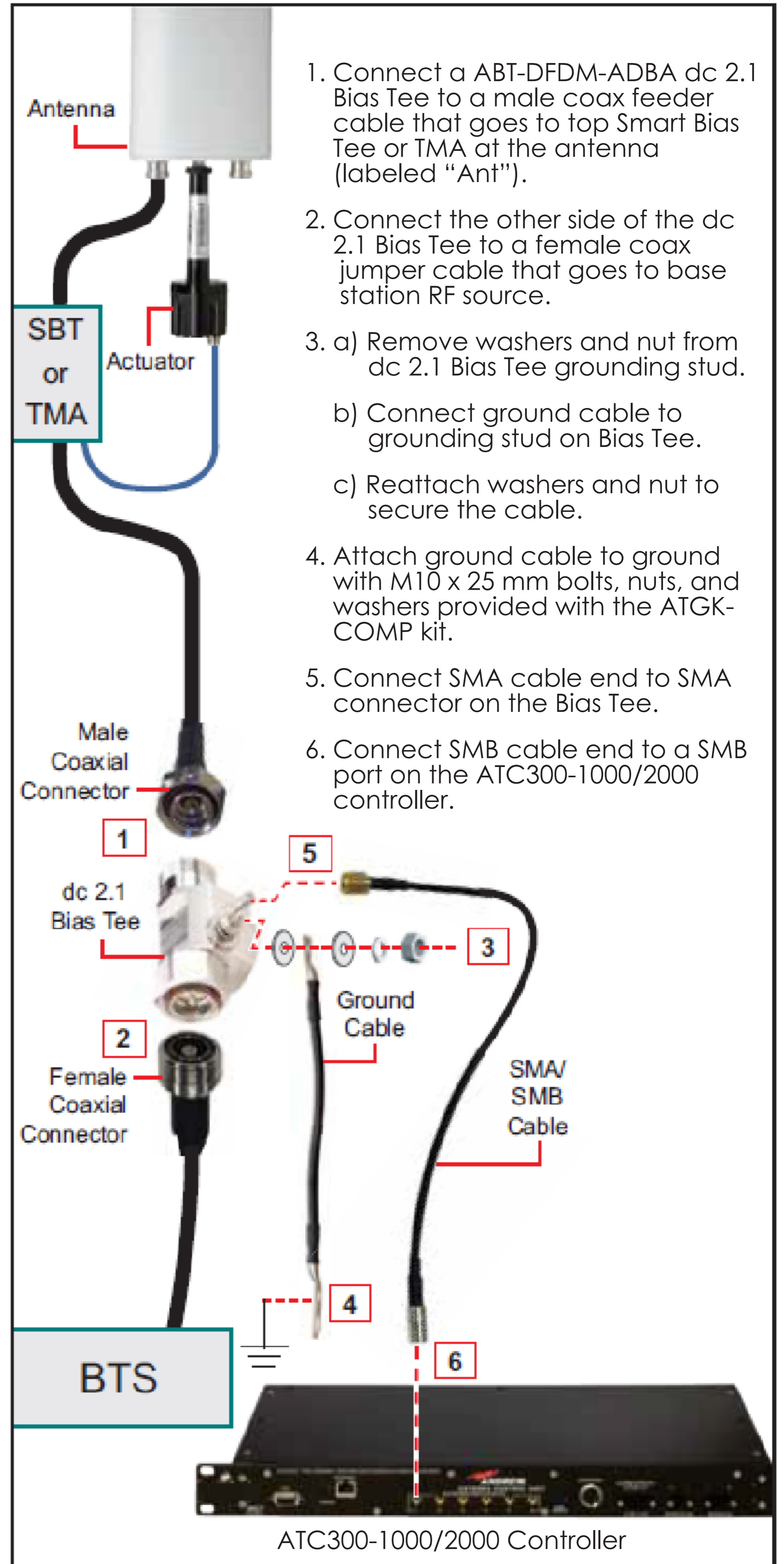


Figure 3. Setting Up The ATBTK-MF In A RET System.