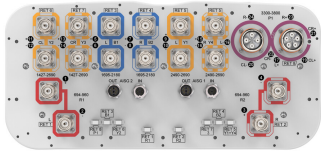


RRZZHHTT-S4-B8V2



24-port sector antenna, 4x 694-960, 4x 1427-2690, 4x 1695-2180, 4x 2490-2690 and 8x 3300-3800 MHz, 65° HPBW, 8x RET

- Antenna includes 2x Single Column X-Pol Arrays for 694-960MHz and 2x Single Column X-Pol Arrays for 1427-2690MHz, suitable for 4x MIMO applications
- Includes 2x Single Column X-Pol Diplexed Arrays providing 4-Ports x 1695-2180MHz and 4 Ports x 2490-2690MHz, suitable for 4x MIMO applications
- Retractable tilt indicator rods
- Excellent wind loading characteristics
- MQ4/MQ5 cluster connector for 3.3-3.8GHz, equipped with calibration port
- Includes eight Internal RET's. All 2490-2690MHz (Y1&Y4) ports share common RET

OBSOLETE

This product was discontinued on: **March 30, 2024**

General Specifications

Antenna Type	Sector and beamforming
Band	Multiband
Calibration Connector Interface	MQ5
Calibration Connector Quantity	1
Color	Light Gray (RAL 7035)
Performance Note	Outdoor usage
Radome Material	Fiberglass, UV resistant
RF Connector Interface	4.3-10 Female MQ4 MQ5
RF Connector Location	Bottom
RF Connector Quantity, high band	20
RF Connector Quantity, mid band	0
RF Connector Quantity, low band	4
RF Connector Quantity, total	24

Remote Electrical Tilt (RET) Information

RET Hardware	CommRET v2
RET Interface, quantity	2 female 2 male
Internal RET	High band (6) Low band (2)

RRZZHHTT-S4-B8V2

Protocol 3GPP/AISG 2.0

Dimensions

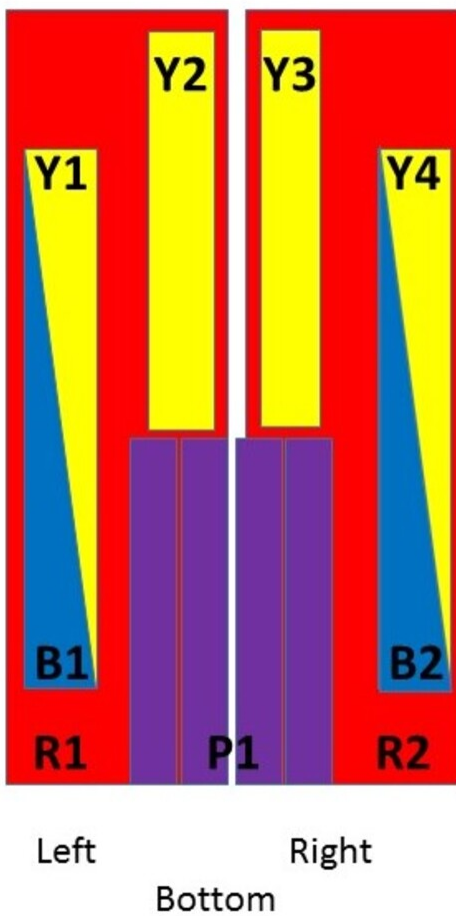
Width 430 mm | 16.929 in

Depth 197 mm | 7.756 in

Length 2100 mm | 82.677 in

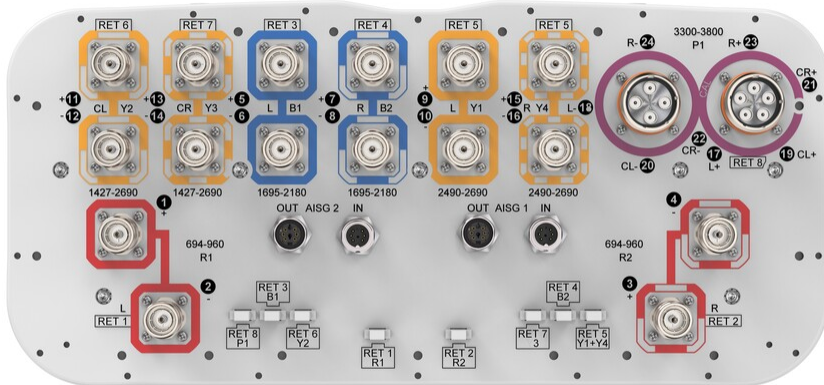
Net Weight, antenna only 41.2 kg | 90.83 lb

Array Layout



Port Configuration

RRZZHHTT-S4-B8V2



Electrical Specifications

Impedance	50 ohm
Operating Frequency Band	1427 – 2690 MHz 1695 – 2180 MHz 2490 – 2690 MHz 3300 – 3800 MHz 694 – 960 MHz
Polarization	±45°

Electrical Specifications

Frequency Band, MHz	694-790	790-890	890-960	1427-1518	1695-2200	2300-2690	1695-2180	2490-2690	3300-3800
Gain, dBi	14.1	15	15	14.1	15.9	16.6	17.1	17.7	15.8
Beamwidth, Horizontal, degrees	70	60	59	69	63	61	69	64	82
Beamwidth, Vertical, degrees	10.6	9.5	8.7	9.9	7.6	6.2	5.2	4.2	6.2
Beam Tilt, degrees	2-12	2-12	2-12	2-12	2-12	2-12	2-12	2-12	2-12
USLS (First Lobe), dB	20	19	18	13	18	20	19	21	16
Front-to-Back Ratio at 180°, dB	31	31	30	34	34	31	32	32	28
Front-to-Back Ratio, Copolarization 180° ± 30°, dB	28	29	27	29	30	28	28	26	23
Coupling level, Amp, Antenna port to Cal port, dB									26
Coupling level, max Amp Δ, Antenna port to Cal port, dB									±2
Coupler, max Amp Δ,									0.9

RRZZHHTT-S4-B8V2

Antenna port to Cal port, dB

Coupler, max Phase Δ, Antenna port to Cal port, degrees									7
Isolation, Cross Polarization, dB	27	27	27	26	26	26	27	27	25
Isolation, Inter-band, dB	27	27	27	26	26	26	26	27	19
VSWR Return loss, dB	1.5 14.0	1.5 14.0	1.5 14.0	1.5 14.0	1.5 14.0	1.5 14.0	1.5 14.0	1.5 14.0	1.5 14.0
PIM, 3rd Order, 2 x 20 W, dBc	-153	-153	-153	-153	-153	-153	-153	-153	-130
Input Power per Port at 50° C, maximum, watts	250	250	250	200	200	150	200	150	75

Electrical Specifications, Broadcast 65°

Frequency Band, MHz	3300–3800
Gain, dBi	16.5
Beamwidth, Horizontal, degrees	59
Beamwidth, Vertical, degrees	6.1
USLS (First Lobe), dB	17

Electrical Specifications, Service Beam

Frequency Band, MHz	3300–3800
Steered 0° Gain, dBi	20.7
Steered 0° Beamwidth, Horizontal, degrees	24
Steered 0° Front-to-Back Total Power at 180° ± 30°, dB	29
Steered 0° Horizontal Sidelobe, dB	15
Steered 30° Gain, dBi	19.6
Steered 30° Beamwidth, Horizontal, degrees	28
Steered 30° Front-to-Back Total Power at 180° ± 30°, dB	26
Steered 30° Horizontal Sidelobe, dB	10

RRZZHHTT-S4-B8V2

Electrical Specifications, Soft Split

Frequency Band, MHz	3300–3800
Gain, dBi	19.6
Beamwidth, Horizontal, degrees	31
Front-to-Back Total Power at 180° ± 30°, dB	26
Horizontal Sidelobe, dB	16

Mechanical Specifications

Wind Loading @ Velocity, frontal	538.0 N @ 150 km/h (120.9 lbf @ 150 km/h)
Wind Loading @ Velocity, lateral	268.0 N @ 150 km/h (60.2 lbf @ 150 km/h)
Wind Loading @ Velocity, maximum	829.0 N @ 150 km/h (186.4 lbf @ 150 km/h)
Wind Loading @ Velocity, rear	387.0 N @ 150 km/h (87.0 lbf @ 150 km/h)
Wind Speed, maximum	241 km/h (150 mph)

Packaging and Weights

Width, packed	530 mm 20.866 in
Depth, packed	349 mm 13.74 in
Length, packed	2272 mm 89.449 in
Weight, gross	53.5 kg 117.947 lb

Regulatory Compliance/Certifications

Agency	Classification
CHINA-ROHS	Below maximum concentration value
ISO 9001:2015	Designed, manufactured and/or distributed under this quality management system
REACH-SVHC	Compliant as per SVHC revision on www.commscope.com/ProductCompliance
ROHS	Compliant
UK-ROHS	Compliant/Exempted



Included Products

- BSAMNT-3 – Wide Profile Antenna Downtilt Mounting Kit for 2.4 - 4.5 in (60 - 115 mm) OD round members. Kit contains one scissor top bracket set and one bottom bracket set.

RRZZHHTT-S4-B8V2

* Footnotes

Performance Note

Severe environmental conditions may degrade optimum performance

BSAMNT-3



Wide Profile Antenna Downtilt Mounting Kit for 2.4 - 4.5 in (60 - 115 mm) OD round members. Kit contains one scissor top bracket set and one bottom bracket set.

Product Classification

Product Type Downtilt mounting kit

General Specifications

Application Outdoor

Color Silver

Dimensions

Compatible Diameter, maximum 115 mm | 4.528 in

Compatible Diameter, minimum 60 mm | 2.362 in

Weight, net 6.2 kg | 13.669 lb

Material Specifications

Material Type Galvanized steel

Packaging and Weights

Included Brackets | Hardware

Packaging quantity 1

Weight, gross 6.4 kg | 14.11 lb

Regulatory Compliance/Certifications

Agency	Classification
CE	Compliant with the relevant CE product directives
CHINA-ROHS	Below maximum concentration value
ISO 9001:2015	Designed, manufactured and/or distributed under this quality management system
REACH-SVHC	Compliant as per SVHC revision on www.commscope.com/ProductCompliance
ROHS	Compliant
UK-ROHS	Compliant

BSAMNT-3

