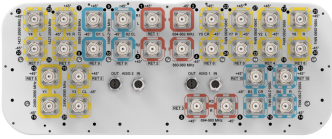


EGRZZH4T4VV65DR10



30-port sector antenna, 2x 694-862 (R1), 2x 880-960 (R2), 2x 694-960 (R3), 4x 1427-2690 (Y4/Y6), 8x 1695-2180 (B1-B4), 8x 2490-2690 (Y1 /Y3/Y5/Y7) & 4x 1695-2690 (Y2&Y8) MHz, 65° HPBW, 10x RET.

- All Internal RET actuators are connected in “Cascaded SRET” configuration
- Supports re-configurable antenna sharing capability enabling control of the internal RET system using up to two separate RET compatible OEM radios
- RET configuration is factory pre-set for antenna sharing - R2, B1, B2, Y1, Y3, Y4, Y6 assigned to AISG2 / R1, R3, B3, B4, Y2, Y5, Y7, Y8 assigned to AISG1

General Specifications

Antenna Type	Sector
Band	Multiband
Color	Light Gray (RAL 7035)
Grounding Type	RF connector inner conductor and body grounded to reflector and mounting bracket
Performance Note	Outdoor usage
Radome Material	Fiberglass, UV resistant
Radiator Material	Low loss circuit board
Reflector Material	Aluminum
RF Connector Interface	4.3-10 Female
RF Connector Location	Bottom
RF Connector Quantity, high band	24
RF Connector Quantity, low band	6
RF Connector Quantity, total	30

Remote Electrical Tilt (RET) Information

RET Hardware	CommRET v2
RET Interface	8-pin DIN Female 8-pin DIN Male
RET Interface, quantity	2 female 2 male
Input Voltage	10–30 Vdc
Internal RET	High band (7) Low band (3)
Power Consumption, active state, maximum	8 W
Power Consumption, idle state, maximum	1 W

EGRZZH4T4VV65DR10

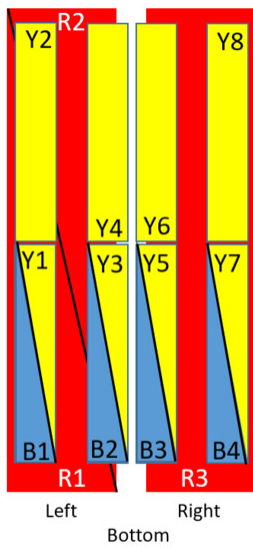
Protocol

3GPP/AISG 2.0 (Single RET)

Dimensions

Width 498 mm | 19.606 in
Depth 197 mm | 7.756 in
Length 2688 mm | 105.827 in
Net Weight, antenna only 67.3 kg | 148.371 lb

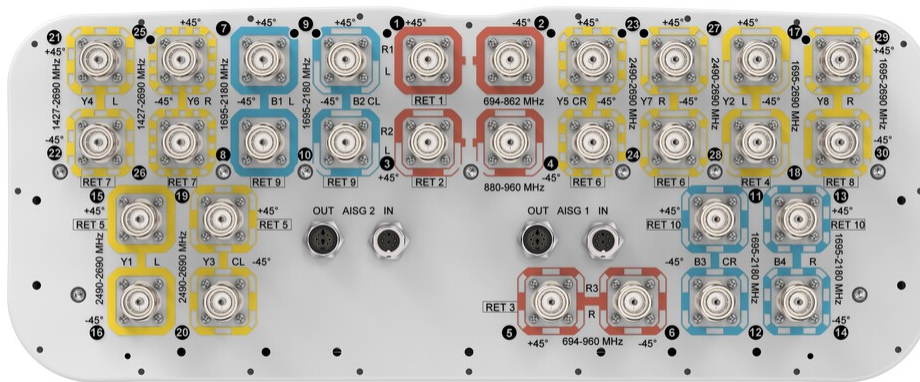
Array Layout



Array	Freq (MHz)	Conns	RET (SRET)	AISG RET UID	AISG
R1	694-862	1-2	1	CPxxxxxxxxxxxxR1	AISG 1
R2	880-960	3-4	2	CPxxxxxxxxxxxxR2	AISG 2
R3	694-960	5-6	3	CPxxxxxxxxxxxxR3	AISG 1
B1	1695-2180	7-8	9	CPxxxxxxxxxxxxB1	AISG 2
B2	1695-2180	9-10	10	CPxxxxxxxxxxxxB3	AISG 1
B3	1695-2180	11-12			
B4	1695-2180	13-14			
Y1	2490-2690	15-16	5	CPxxxxxxxxxxxxY1	AISG 2
Y3	2490-2690	19-20	6	CPxxxxxxxxxxxxY5	AISG 1
Y5	2490-2690	23-24			
Y7	2490-2690	27-28			
Y4	1427-2690	21-22	7	CPxxxxxxxxxxxxY4	AISG 2
Y6	1427-2690	25-26			
Y2	1695-2690	17-18	4	CPxxxxxxxxxxxxY2	AISG 1
Y8	1695-2690	29-30	8	CPxxxxxxxxxxxxY8	AISG 1

(Sizes of colored boxes are not true depictions of array sizes)

Port Configuration



EGRZZH4T4VV65DR10

Electrical Specifications

Impedance	50 ohm
Operating Frequency Band	1427 – 1518 MHz 1695 – 2180 MHz 1695 – 2690 MHz 2490 – 2690 MHz 694 – 862 MHz 694 – 960 MHz 880 – 960 MHz
Polarization	±45°
Total Input Power, maximum	900 W @ 50 °C

Electrical Specifications

	R1/R3	R2/R3	B1-B4	B1-B4	Y1/Y3/Y5/Y7	Y2/Y4/Y6/Y8	Y2/Y4/Y6/Y8	Y4/Y6
Frequency Band, MHz	694–862	880–960	1695–1880	1920–2180	2490–2690	1695–2180	2490–2690	1427–1518
RF Port	1,2,5,6	3,4,5,6	7-14	7-14	15,16,19,20,23,24,27,28	17,18,21,22,25,26,29,30	17,18,21,22,25,26,29,30	21,22,25,26
Gain, dBi	15.9	16	15.8	16.8	17.5	17.1	17.8	15
Beamwidth, Horizontal, degrees	68	64	69	63	56	62	55	71
Beamwidth, Vertical, degrees	8.6	7.4	7.4	6.7	5.5	7.2	5.4	9.4
Beam Tilt, degrees	2–14	2–14	2–12	2–12	2–12	2–12	2–12	2–12
USLS (First Lobe), dB	15	15	16	16	14	16	18	19
Front-to-Back Ratio at 180°, dB	32	29	32	30	27	33	31	34
Isolation, Cross Polarization, dB	28	28	25	25	25	25	25	25
Isolation, Inter-band, dB	28	28	25	25	25	25	25	25
VSWR Return loss, dB	1.5 14.0	1.5 14.0	1.5 14.0	1.5 14.0	1.5 14.0	1.5 14.0	1.5 14.0	1.5 14.0
PIM, 3rd Order, 2 x 20 W, dBc	-150	-150	-150	-150	-150	-150	-150	-150
Input Power	200	200	200	200	150	200	200	200

EGRZZH4T4VV65DR10

per Port at
50°C,
maximum,
watts

Electrical Specifications, BASTA

Frequency Band, MHz	694–862	880–960	1695–1880	1920–2180	2490–2690	1695–2180	2490–2690	1427–1518
Gain by all Beam Tilts, average, dBi	15.3	15.5	15.4	16.3	16.8	16.2	17.4	14.7
Gain by all Beam Tilts Tolerance, dB	±0.8	±0.8	±0.5	±0.7	±0.8	±1	±0.7	±0.4
Beamwidth, Horizontal Tolerance, degrees	±7	±6	±7	±5	±6	±9	±5	±7
Beamwidth, Vertical Tolerance, degrees	±0.8	±0.5	±0.4	±0.5	±0.3	±1	±0.3	±0.6
USLS, beampeak to 20° above beampeak, dB	14	14	13	14	13	15	14	15
Front-to-Back Total Power at 180° ± 30°, dB	22	22	26	24	21	25	25	26
CPR at Boresight, dB	19	15	17	20	21	18	21	19
CPR at Sector, dB	8	11	9	7	4	6	2	3

Mechanical Specifications

Wind Loading @ Velocity, frontal	914.0 N @ 150 km/h (205.5 lbf @ 150 km/h)
Wind Loading @ Velocity, lateral	239.0 N @ 150 km/h (53.7 lbf @ 150 km/h)
Wind Loading @ Velocity, maximum	1,215.0 N @ 150 km/h (273.1 lbf @ 150 km/h)
Wind Loading @ Velocity, rear	629.0 N @ 150 km/h (141.4 lbf @ 150 km/h)

EGRZZH4T4VV65DR10

Wind Speed, maximum 241 km/h (150 mph)

Packaging and Weights

Width, packed 565 mm | 22.244 in
Depth, packed 309 mm | 12.165 in
Length, packed 2935 mm | 115.551 in
Weight, gross 88.3 kg | 194.668 lb

Regulatory Compliance/Certifications

Agency	Classification
CHINA-ROHS	Below maximum concentration value
ISO 9001:2015	Designed, manufactured and/or distributed under this quality management system
REACH-SVHC	Compliant as per SVHC revision on www.commscope.com/ProductCompliance
ROHS	Compliant
UK-ROHS	Compliant



Included Products

- BSAMNT-4 – Wide Profile Antenna Downtilt Mounting Kit for 2.4 - 4.5 in (60 - 115 mm) OD round members. Kit contains one scissor top bracket set and one bottom bracket set.
- BSAMNT-M4 – Middle Downtilt Mounting Kit for Long Antennas for 2.4 - 4.5 in (60 - 115 mm) OD round members. Kit contains one scissor bracket set.

* Footnotes

Performance Note Severe environmental conditions may degrade optimum performance

BSAMNT-4



Wide Profile Antenna Downtilt Mounting Kit for 2.4 - 4.5 in (60 - 115 mm) OD round members. Kit contains one scissor top bracket set and one bottom bracket set.

Product Classification

Product Type Downtilt mounting kit

General Specifications

Application Outdoor

Color Silver

Dimensions

Compatible Diameter, maximum 115 mm | 4.528 in

Compatible Diameter, minimum 60 mm | 2.362 in

Weight, net 6.5 kg | 14.33 lb

Material Specifications

Material Type Galvanized steel

Packaging and Weights

Included Brackets | Hardware

Packaging quantity 1

Regulatory Compliance/Certifications

Agency	Classification
CHINA-ROHS	Below maximum concentration value
ISO 9001:2015	Designed, manufactured and/or distributed under this quality management system
REACH-SVHC	Compliant as per SVHC revision on www.commscope.com/ProductCompliance
ROHS	Compliant
UK-ROHS	Compliant



BSAMNT-M4



Middle Downtilt Mounting Kit for Long Antennas for 2.4 - 4.5 in (60 - 115 mm) OD round members. Kit contains one scissor bracket set.

Product Classification

Product Type Downtilt mounting kit

General Specifications

Application Outdoor

Color Silver

Dimensions

Compatible Diameter, maximum 115 mm | 4.528 in

Compatible Diameter, minimum 60 mm | 2.362 in

Weight, net 4.6 kg | 10.141 lb

Material Specifications

Material Type Galvanized steel

Packaging and Weights

Included Brackets | Hardware

Packaging quantity 1

Regulatory Compliance/Certifications

Agency	Classification
CHINA-ROHS	Below maximum concentration value
ISO 9001:2015	Designed, manufactured and/or distributed under this quality management system
REACH-SVHC	Compliant as per SVHC revision on www.commscope.com/ProductCompliance
ROHS	Compliant
UK-ROHS	Compliant

