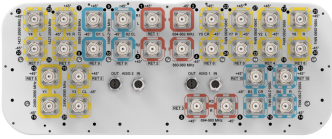


# EGRZZH4T4VV65DR10



30-port sector antenna, 2x 694-862 (R1), 2x 880-960 (R2), 2x 694-960 (R3), 4x 1427-2690 (Y4/Y6), 8x 1695-2180 (B1-B4), 8x 2490-2690 (Y1/Y3/Y5/Y7) & 4x 1695-2690 (Y2&Y8) MHz, 65° HPBW, 10x RET.

- All Internal RET actuators are connected in “Cascaded SRET” configuration
- Supports re-configurable antenna sharing capability enabling control of the internal RET system using up to two separate RET compatible OEM radios
- RET configuration is factory pre-set for antenna sharing - R2, B1, B2, Y1, Y3, Y4, Y6 assigned to AISG2 / R1, R3, B3, B4, Y2, Y5, Y7, Y8 assigned to AISG1

## General Specifications

<b>Antenna Type</b>	Sector
<b>Band</b>	Multiband
<b>Color</b>	Light Gray (RAL 7035)
<b>Grounding Type</b>	RF connector inner conductor and body grounded to reflector and mounting bracket
<b>Performance Note</b>	Outdoor usage
<b>Radome Material</b>	Fiberglass, UV resistant
<b>Radiator Material</b>	Low loss circuit board
<b>Reflector Material</b>	Aluminum
<b>RF Connector Interface</b>	4.3-10 Female
<b>RF Connector Location</b>	Bottom
<b>RF Connector Quantity, high band</b>	24
<b>RF Connector Quantity, low band</b>	6
<b>RF Connector Quantity, total</b>	30

## Remote Electrical Tilt (RET) Information

<b>RET Hardware</b>	CommRET v2
<b>RET Interface</b>	8-pin DIN Female   8-pin DIN Male
<b>RET Interface, quantity</b>	2 female   2 male
<b>Input Voltage</b>	10–30 Vdc
<b>Internal RET</b>	High band (7)   Low band (3)
<b>Power Consumption, active state, maximum</b>	8 W
<b>Power Consumption, idle state, maximum</b>	1 W

# EGRZZH4T4VV65DR10

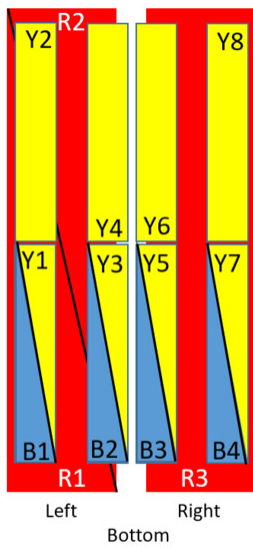
## Protocol

3GPP/AISG 2.0 (Single RET)

## Dimensions

**Width** 498 mm | 19.606 in  
**Depth** 197 mm | 7.756 in  
**Length** 2688 mm | 105.827 in  
**Net Weight, antenna only** 67.3 kg | 148.371 lb

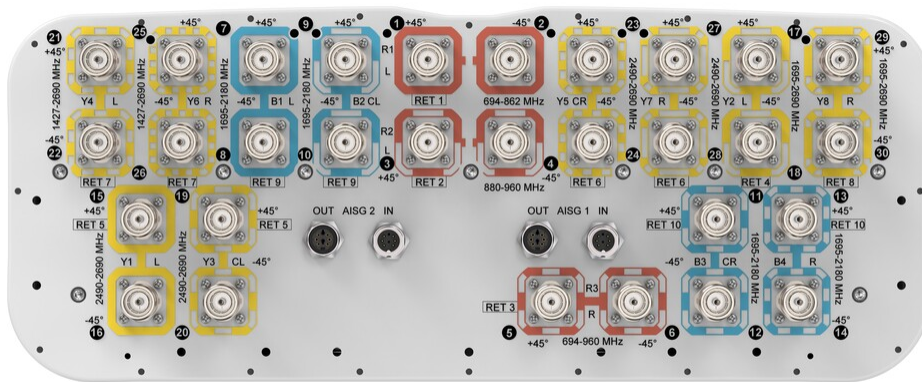
## Array Layout



Array	Freq (MHz)	Conns	RET (SRET)	AISG RET UID	AISG
R1	694-862	1-2	1	CPxxxxxxxxxxxxxxxxR1	AISG 1
R2	880-960	3-4	2	CPxxxxxxxxxxxxxxxxR2	AISG 2
R3	694-960	5-6	3	CPxxxxxxxxxxxxxxxxR3	AISG 1
B1	1695-2180	7-8	9	CPxxxxxxxxxxxxxxxxB1	AISG 2
B2	1695-2180	9-10	10	CPxxxxxxxxxxxxxxxxB3	AISG 1
B3	1695-2180	11-12			
B4	1695-2180	13-14			
Y1	2490-2690	15-16	5	CPxxxxxxxxxxxxxxxxY1	AISG 2
Y3	2490-2690	19-20	6	CPxxxxxxxxxxxxxxxxY5	AISG 1
Y5	2490-2690	23-24			
Y7	2490-2690	27-28			
Y4	1427-2690	21-22	7	CPxxxxxxxxxxxxxxxxY4	AISG 2
Y6	1427-2690	25-26			
Y2	1695-2690	17-18	4	CPxxxxxxxxxxxxxxxxY2	AISG 1
Y8	1695-2690	29-30	8	CPxxxxxxxxxxxxxxxxY8	AISG 1

(Sizes of colored boxes are not true depictions of array sizes)

## Port Configuration



# EGRZZH4T4VV65DR10

## Electrical Specifications

<b>Impedance</b>	50 ohm
<b>Operating Frequency Band</b>	1427 – 1518 MHz   1695 – 2180 MHz   1695 – 2690 MHz   2490 – 2690 MHz   694 – 862 MHz   694 – 960 MHz   880 – 960 MHz
<b>Polarization</b>	±45°
<b>Total Input Power, maximum</b>	900 W @ 50 °C

## Electrical Specifications

	<b>R1/R3</b>	<b>R2/R3</b>	<b>B1-B4</b>	<b>B1-B4</b>	<b>Y1/Y3/Y5/Y7</b>	<b>Y2/Y4/Y6/Y8</b>	<b>Y2/Y4/Y6/Y8</b>	<b>Y4/Y6</b>
<b>Frequency Band, MHz</b>	<b>694–862</b>	<b>880–960</b>	<b>1695–1880</b>	<b>1920–2180</b>	<b>2490–2690</b>	<b>1695–2180</b>	<b>2490–2690</b>	<b>1427–1518</b>
<b>RF Port</b>	1,2,5,6	3,4,5,6	7-14	7-14	15,16,19,20,23,24,27,28	17,18,21,22,25,26,29,30	17,18,21,22,25,26,29,30	21,22,25,26
<b>Gain, dBi</b>	15.9	16	15.8	16.8	17.5	17.1	17.8	15
<b>Beamwidth, Horizontal, degrees</b>	68	64	69	63	56	62	55	71
<b>Beamwidth, Vertical, degrees</b>	8.6	7.4	7.4	6.7	5.5	7.2	5.4	9.4
<b>Beam Tilt, degrees</b>	2–14	2–14	2–12	2–12	2–12	2–12	2–12	2–12
<b>USLS (First Lobe), dB</b>	15	15	16	16	14	16	18	19
<b>Front-to-Back Ratio at 180°, dB</b>	32	29	32	30	27	33	31	34
<b>Isolation, Cross Polarization, dB</b>	28	28	25	25	25	25	25	25
<b>Isolation, Inter-band, dB</b>	28	28	25	25	25	25	25	25
<b>VSWR   Return loss, dB</b>	1.5 14.0	1.5 14.0	1.5 14.0	1.5 14.0	1.5 14.0	1.5 14.0	1.5 14.0	1.5 14.0
<b>PIM, 3rd Order, 2 x 20 W, dBc</b>	-150	-150	-150	-150	-150	-150	-150	-150
<b>Input Power</b>	200	200	200	200	150	200	200	200

# EGRZZH4T4VV65DR10

per Port at  
50°C,  
maximum,  
watts

## Electrical Specifications, BASTA

Frequency Band, MHz	694–862	880–960	1695–1880	1920–2180	2490–2690	1695–2180	2490–2690	1427–1518
Gain by all Beam Tilts, average, dBi	15.3	15.5	15.4	16.3	16.8	16.2	17.4	14.7
Gain by all Beam Tilts Tolerance, dB	±0.8	±0.8	±0.5	±0.7	±0.8	±1	±0.7	±0.4
Beamwidth, Horizontal Tolerance, degrees	±7	±6	±7	±5	±6	±9	±5	±7
Beamwidth, Vertical Tolerance, degrees	±0.8	±0.5	±0.4	±0.5	±0.3	±1	±0.3	±0.6
USLS, beampeak to 20° above beampeak, dB	14	14	13	14	13	15	14	15
Front-to-Back Total Power at 180° ± 30°, dB	22	22	26	24	21	25	25	26
CPR at Boresight, dB	19	15	17	20	21	18	21	19
CPR at Sector, dB	8	11	9	7	4	6	2	3

## Mechanical Specifications

Wind Loading @ Velocity, frontal	914.0 N @ 150 km/h (205.5 lbf @ 150 km/h)
Wind Loading @ Velocity, lateral	239.0 N @ 150 km/h (53.7 lbf @ 150 km/h)
Wind Loading @ Velocity, maximum	1,215.0 N @ 150 km/h (273.1 lbf @ 150 km/h)
Wind Loading @ Velocity, rear	629.0 N @ 150 km/h (141.4 lbf @ 150 km/h)

# EGRZZH4T4VV65DR10

---

**Wind Speed, maximum** 241 km/h (150 mph)

## Packaging and Weights

**Width, packed** 565 mm | 22.244 in  
**Depth, packed** 309 mm | 12.165 in  
**Length, packed** 2935 mm | 115.551 in  
**Weight, gross** 88.3 kg | 194.668 lb

## Regulatory Compliance/Certifications

Agency	Classification
CHINA-ROHS	Below maximum concentration value
ISO 9001:2015	Designed, manufactured and/or distributed under this quality management system
REACH-SVHC	Compliant as per SVHC revision on <a href="http://www.commscope.com/ProductCompliance">www.commscope.com/ProductCompliance</a>
ROHS	Compliant
UK-ROHS	Compliant



## Included Products

- BSAMNT-4 – Wide Profile Antenna Downtilt Mounting Kit for 2.4 - 4.5 in (60 - 115 mm) OD round members. Kit contains one scissor top bracket set and one bottom bracket set.
- BSAMNT-M4 – Middle Downtilt Mounting Kit for Long Antennas for 2.4 - 4.5 in (60 - 115 mm) OD round members. Kit contains one scissor bracket set.

## \* Footnotes

**Performance Note** Severe environmental conditions may degrade optimum performance