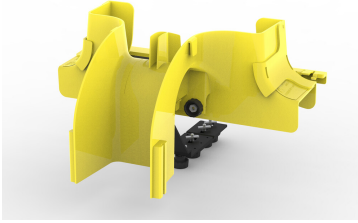


FGS-MEXP-E-ABF-NC



FiberGuide® 4-Inch Express Exit™, Cover Not Included, 4x4, 4x6, 4x12in, Yellow

Product Classification

Regional Availability	Asia Australia/New Zealand EMEA Latin America North America
Portfolio	CommScope®
Product Type	Express exit
Product Brand	FiberGuide® FiberGuide®
Product Series	FGS

General Specifications

Color	Yellow
Orientation	Horizontal
Section Type	Express exit

Dimensions

Height	189.992 mm 7.48 in
Width	315.976 mm 12.44 in
Length	406.4 mm 16 in
System Dimensions	102 mm x 102 mm (4 in x 4 in) 102 mm x 152 mm (4 in x 6 in) 102 mm x 305 mm (4 in x 12 in) 102 mm x 610 mm (4 in x 24 in)

Ordering Tree

FGS-MEXP-E-ABF-NC

FGS ⁹ B - MEXP - ¹⁰ A/B/F

Section Color

9	empty	yellow
	B	black

Section Size

10	A/B/F	4 x 4/6/12 in, with 2 x 2 in exit
	E-A/B/F	4 x 4/6/12 in, with 4 x 4 in exit
	F-F/H-NC	4 x 12/18/24 in, with 4 x 12 in exit, no cover
	G-A/B/F	4 x 4/6/12 in, with 4 x 6 in exit
	LP-A/B/F	4 x 4/6/12 in, with 2 x 2 in exit, low profile
	LP-CA	4 x 4/6/12 in, with 2 x 4 in exit, low profile
	LP-G	2 x 6 in, with 2 x 2 in exit, low profile
	GS-ABF-NC	4 x 4/6/12 in, with 4 x 6 in exit, no cover
	CV	cover
	NC	no cover

Material Specifications

Material Type Engineering Thermoplastic

Environmental Specifications

Flammability Rating CSA S143 | UL 2024 | UL 94 V-0

Halogen Characteristics Blue Angel | TCO '99 | WEEE

Safety Standard CSA | UL

Packaging and Weights

Included Hardware

Packaging quantity 1

Weight, net 2.79 kg | 6.151 lb

Regulatory Compliance/Certifications

Agency

CHINA-ROHS

REACH-SVHC

ROHS

UK-ROHS

Classification

Below maximum concentration value

Compliant as per SVHC revision on www.commscope.com/ProductCompliance

Compliant

Compliant

