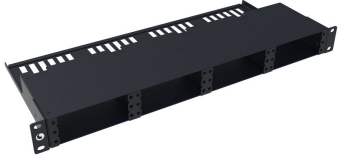


# 760248335 | CHD-ES-1U

---



CHD 1U fixed fiber panel, accepts (12) CHD ULL modules, splice cassettes or MPO panels, providing up to 72 duplex LC ports or up to 72 MPO ports, black, High Speed Migration

## Product Classification

<b>Regional Availability</b>	China
<b>Portfolio</b>	CommScope®
<b>Product Type</b>	Fiber patch panel
<b>Product Series</b>	CHD

## General Specifications

<b>Application</b>	Accepts 12 CHD Universal Modules, or CHD MPO/LC adapter packs
<b>Color</b>	Black
<b>Interface, front</b>	Unloaded
<b>Rack Type</b>	EIA 19 in
<b>Rack Units</b>	1
<b>Shelf Movement</b>	Fixed
<b>Total Ports, quantity</b>	0

## Dimensions

<b>Height</b>	44.45 mm   1.75 in
<b>Width</b>	482.6 mm   19 in
<b>Depth</b>	212.2 mm   8.354 in

## Material Specifications

<b>Finish</b>	Powder coated
<b>Material Type</b>	Steel

## Environmental Specifications

# 760248335 | CHD-ES-1U

---

**Flammability Rating**      UL 94 V-0

## Packaging and Weights

**Packaging quantity**      1

**Weight, net**              1.56 kg | 3.44 lb