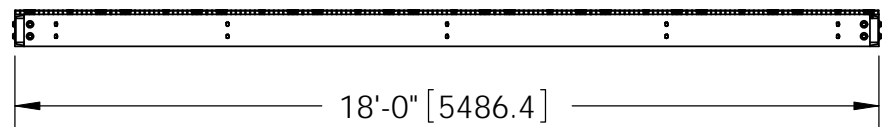
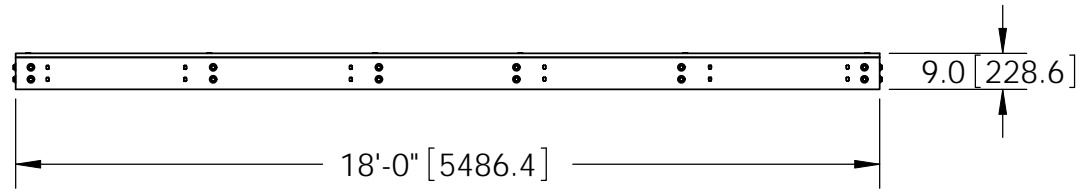
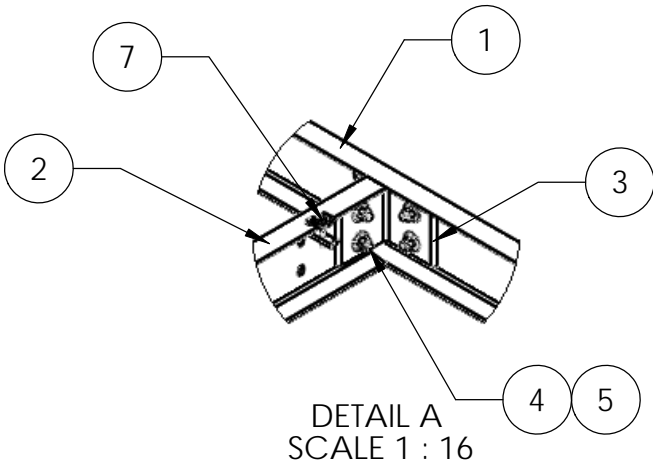
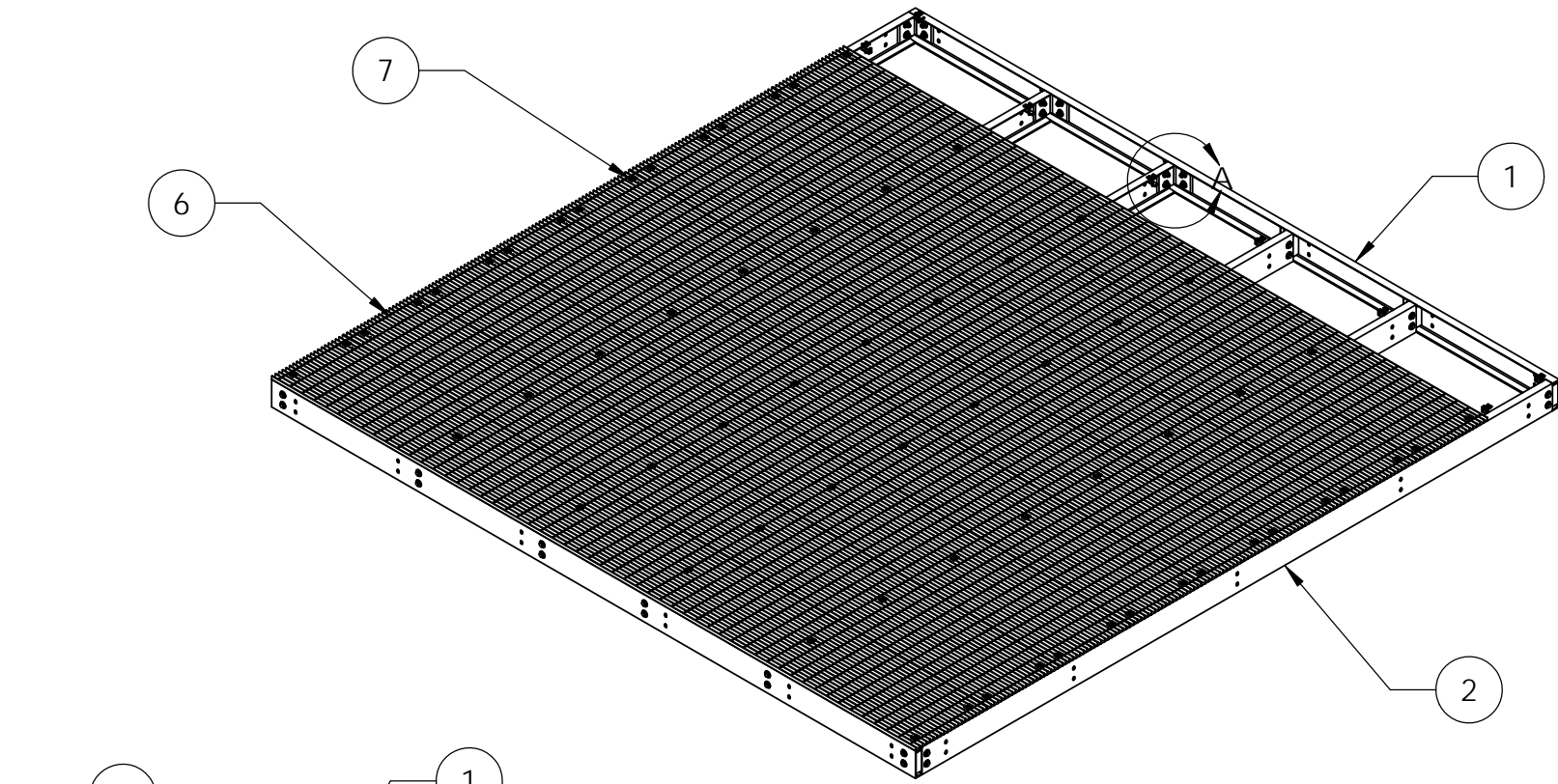
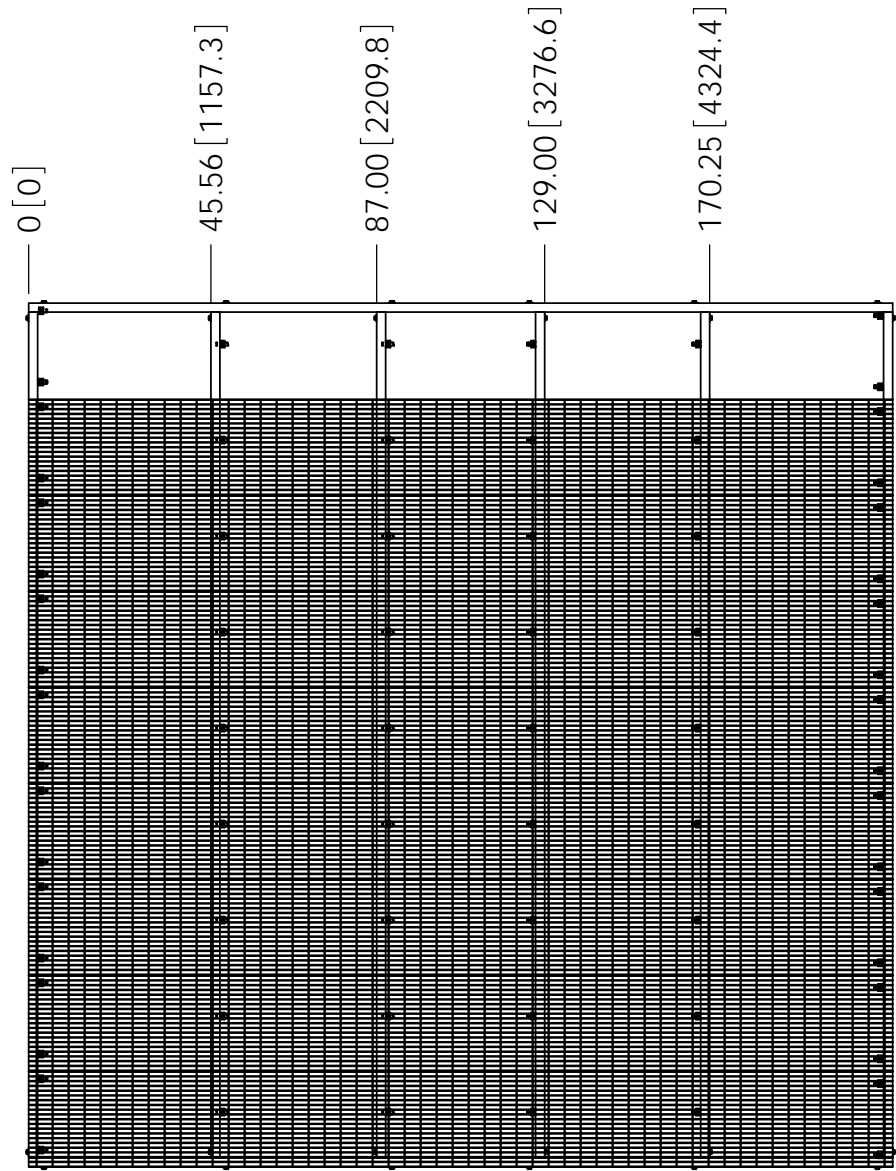


ITEM	PART NO.	DESCRIPTION	QTY.	WEIGHT
1	MTC79021018.01	18' SIDE CHANNEL	2	204.61 LBS
2	EOP181801	18' Platform Center Channel	6	200.69 LBS
3	MTC7902.03	CHANNEL ADAPTER ANGLE	12	7.07 LBS
4	GB-05205	5/8" X 2" GALV BOLT KIT	48	0.27 LBS
5	GWF-05	5/8" GALV FLAT WASHER	96	0.06 LBS
6	MTC7902101802	24" X 18' BAR GRATING	9	245.47 LBS
7	GCM03	GRATING CLIP	72	0.39 LBS

REVISIONS				
REV.	ZONE	DESCRIPTION	BY	DATE
A		INITIAL RELEASE	MSM	04/06/12



NOTES:  
 1. ALL METRIC DIMENSIONS ARE IN BRACKETS.  
 2. GRATING REMOVED FOR CLARITY.

These drawings and specifications are the proprietary property of CommScope Inc. and may be used only for the specific purpose authorized in writing by CommScope Inc.  ALL DIMENSIONS ARE IN INCHES U.O.S. TOLERANCES UNLESS OTHERWISE SPECIFIED: .X = ± .12      ANGLES ±2° .XX = ± .06      FRACTIONS ±1/32 .XXX = ± .03  REMOVE BURRS AND BREAK EDGES .005  DO NOT SCALE THIS PRINT	DRAWN BY: MSM CHECKED BY: TP DATE: 04/06/12 REVISION: A	SHEET: 1 of 1 SCALE: NTS MATERIAL: A36, A568, A529 FINISH: GALV A123 WEIGHT: 3959.03 LBS	PART NUMBER: EQ-P1818-B DESCRIPTION: Equipment Platform 18 x 18 Base DRAWING TYPE: ASSEMBLY DRAWING  <b>COMMSCOPE®</b> Hickory, NC 28602 U.S.A.
---	--	--	--