

4

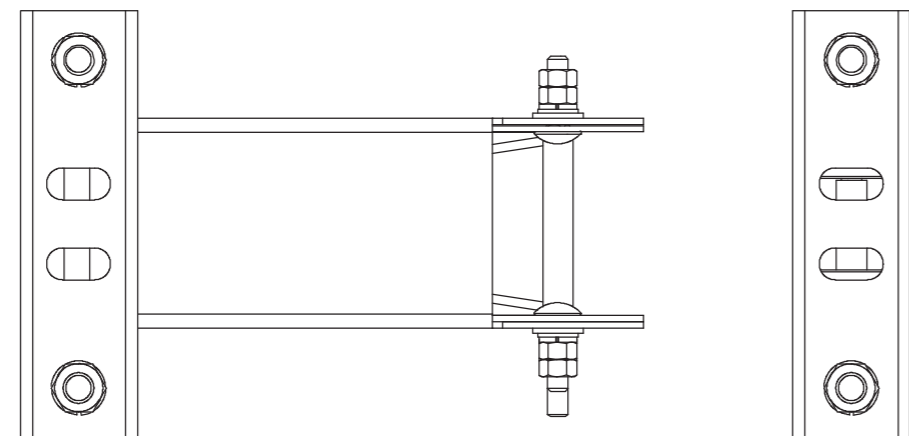
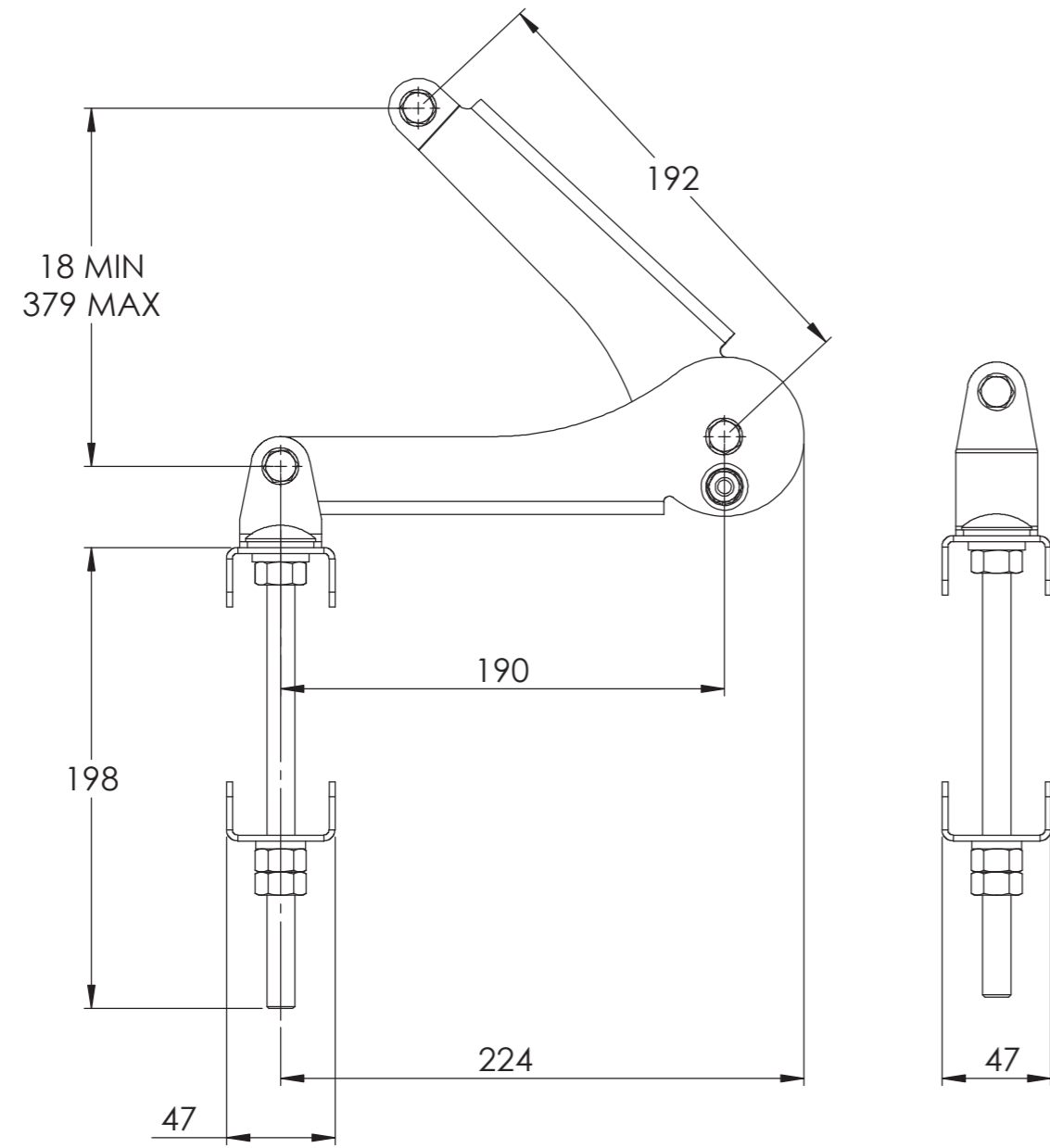
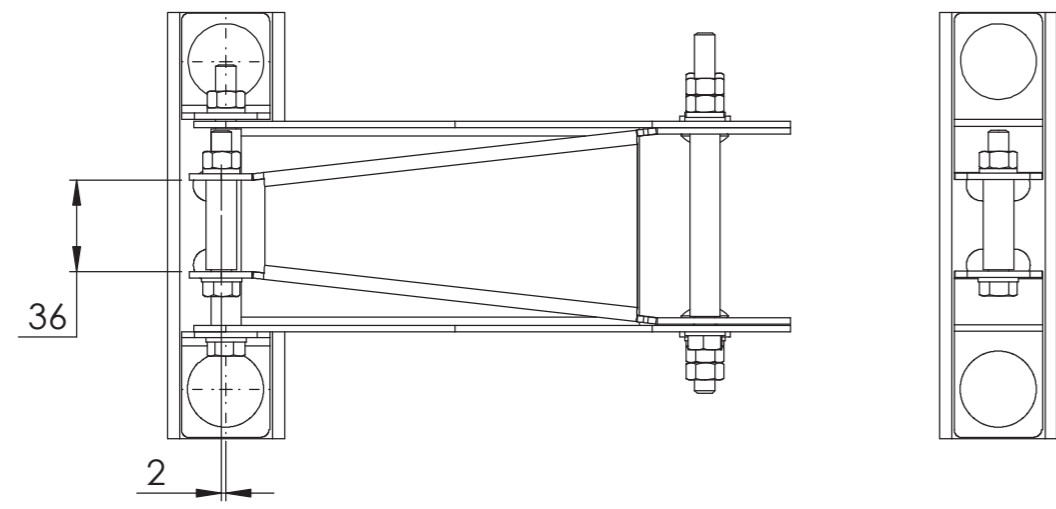
3

2

1

NOTES:

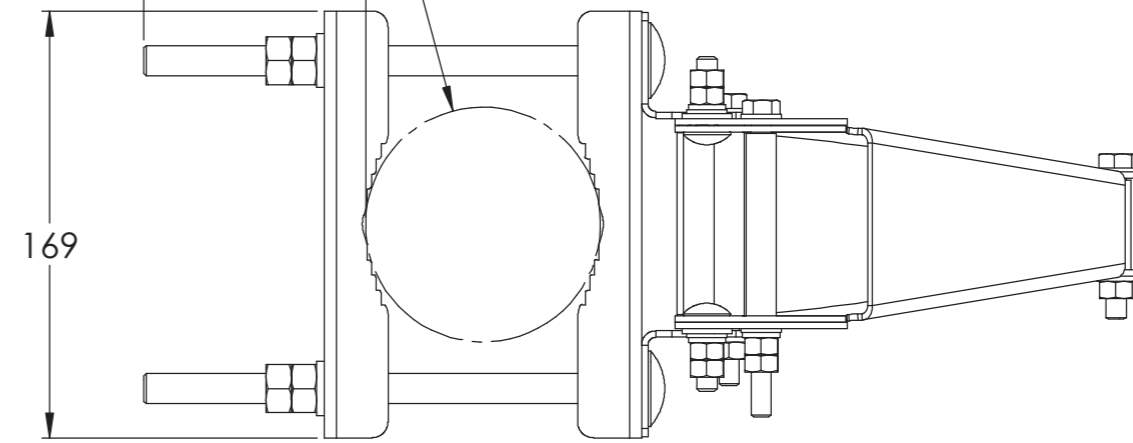
REVISIONS			
REV	DESCRIPTION	DATE	APPROVED
A	ECR 800003574: REL TO PRODUCTION PER EAO 601665	29JUL14 JJH	MB XA
C	ECR 8000010306: ADD DIMENSIONS.	10OCT15 QF	S.LIU/JIHE



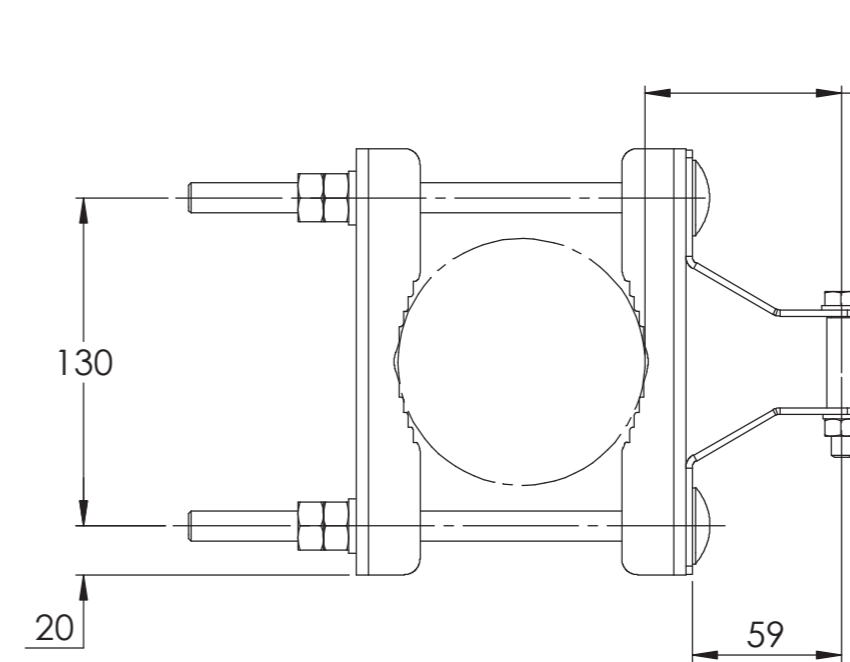
**602030A**



POLE DIAMETER: 60~115 mm

66 MIN  
122 MAX



77 MIN  
78 MAX



MATERIAL N/A	DENSITY: N/A MASS: 3.50 kg	UNLESS OTHERWISE SPECIFIED DIMENSIONS ARE IN MILLIMETERS INTERPRET PER ISO STANDARDS HANDBOOK TECHNICAL DRAWINGS VOLUMES 1 & 2, THIRD EDITION (2002)	 WESTCHESTER, IL. 60154 U.S.A.	
FINISH N/A	<b>TOLERANCES</b> 0 PLACE X ± 1 PLACE .X ± 2 PLACE .XX ± ANGLES ± ALL SURFACES ✓		<b>THIRD ANGLE PROJECTION</b> 	
	DRAWN BY JJH 29JUL14 ECN 8000010306-O		SIZE <b>A2 84147</b>	CAGE CODE DOCUMENT NO. 602030A-L
NOTICE: These drawings and specifications are the proprietary property of ANDREW CORPORATION and may be used only for the specific purpose authorized in writing by Andrew.			MODEL VERSION 01 STATUS RE REVISION B	DRAWING VERSION 03 STATUS RE REVISION C
			SHEET 1 OF 1	

4

3

2

1