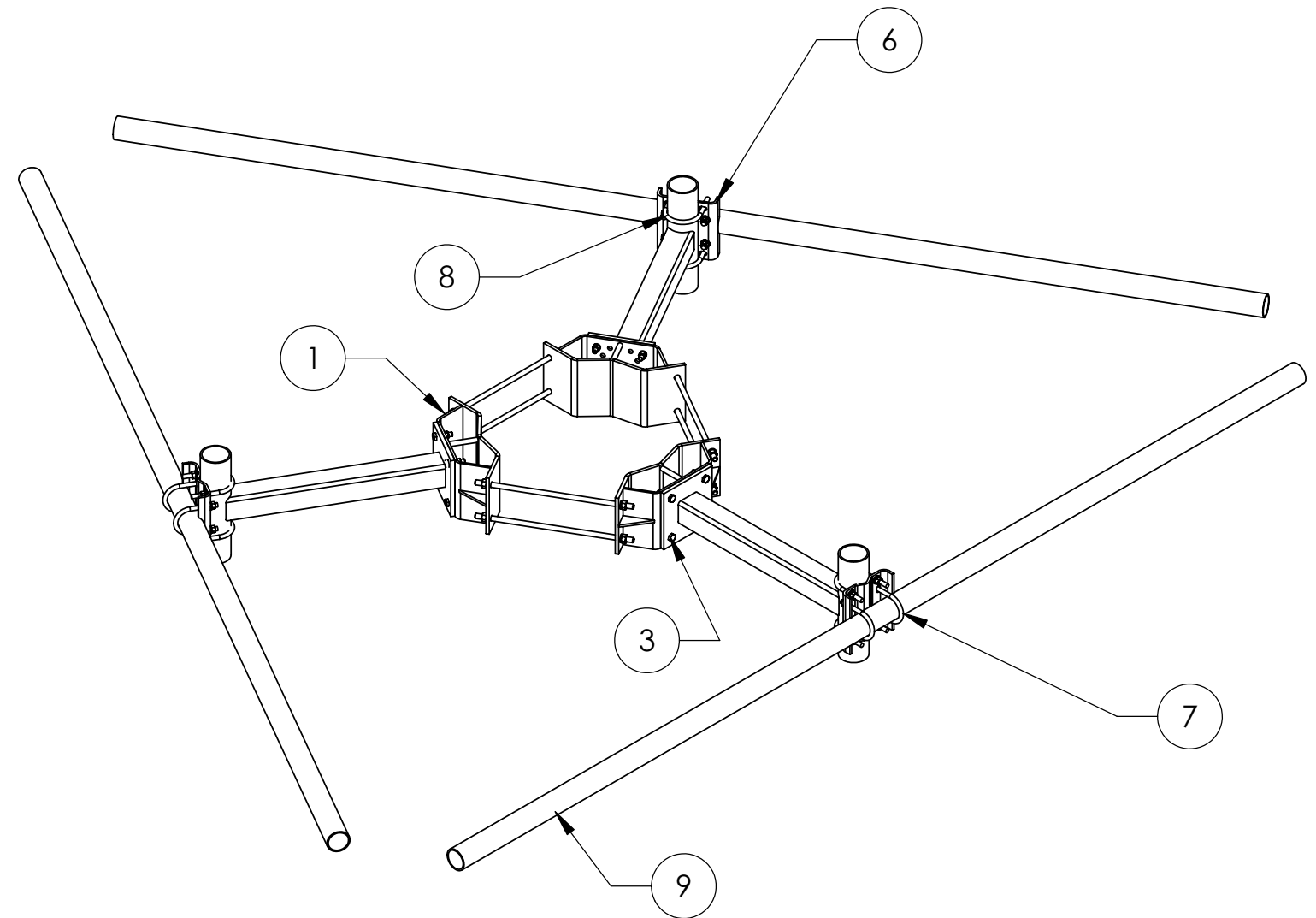



| ITEM | PART NO. | DESCRIPTION | QTY. | WEIGHT |
|------|-------------|-------------------------------------|------|------------|
| 1 | MC-RM1030-3 | Ø 10" - 30" RINGMOUNT | 1 | 189.86 LBS |
| 2 | MT197H | HARDWARE KIT (ITEM 3) | 3 | |
| 3 | GB-0524A | 5/8" X 2-1/2" GALV. BOLT KIT (A325) | 12 | 0.34 LBS |
| 4 | MT197.01 | 36" SINGLE SUPPORT ARM | 3 | 65.98 LBS |
| 5 | MT216NSH | HARDWARE KIT (ITEMS 6-8) | 3 | |
| 6 | MT216.13 | CENTER BRACKET | 3 | 11.80 LBS |
| 7 | GUB-53560 | 5/8" X 3-5/8" X 6" GALV U-BOLT | 6 | 0.72 LBS |
| 8 | GUB-5456 | 5/8" X 4-5/8" X 6-1/2" GALV U-BOLT | 6 | 0.72 LBS |
| 9 | MT-547-174 | 3½" O.D. X 14'-6" GALV. PIPE | 3 | 109.73 LBS |

| REVISIONS | | | | |
|-----------|------|------------------|-----|----------|
| REV. | ZONE | DESCRIPTION | BY | DATE |
| A | | INITIAL RELEASE | ACG | 02/19/03 |
| B | | UPDATE PART LIST | ACG | 03/21/03 |
| C | | UPDATE PART LIST | ACG | 03/08/05 |
| D | | UPDATE MT216NSH | ACG | 12/07/05 |
| E | | REDESIGN ITEM #6 | MSM | 06/06/08 |

PART LIST FOR USE WITH T-FRAME MC-K14S-B

| T-FRAME # | PIPE # | DESCRIPTION | QTY | T-FRAME WEIGHT |
|---------------|-----------|-----------------------------|-----|----------------|
| MC-K14S-B | - | - | 0 | 777.6 LBS |
| MC-K14S-6-72 | MT-651 | 2-3/8" O.D. X 72" GALV PIPE | 6 | 975.2 LBS |
| MC-K14S-6-96 | MT-651-96 | 2-3/8" O.D. X 96" GALV PIPE | 6 | 1019.2 LBS |
| MC-K14S-9-72 | MT-651 | 2-3/8" O.D. X 72" GALV PIPE | 9 | 1074.0 LBS |
| MC-K14S-9-96 | MT-651-96 | 2-3/8" O.D. X 96" GALV PIPE | 9 | 1140.0 LBS |
| MC-K14S-12-72 | MT-651 | 2-3/8" O.D. X 72" GALV PIPE | 12 | 1173.1 LBS |
| MC-K14S-12-96 | MT-651-96 | 2-3/8" O.D. X 96" GALV PIPE | 12 | 1260.8 LBS |

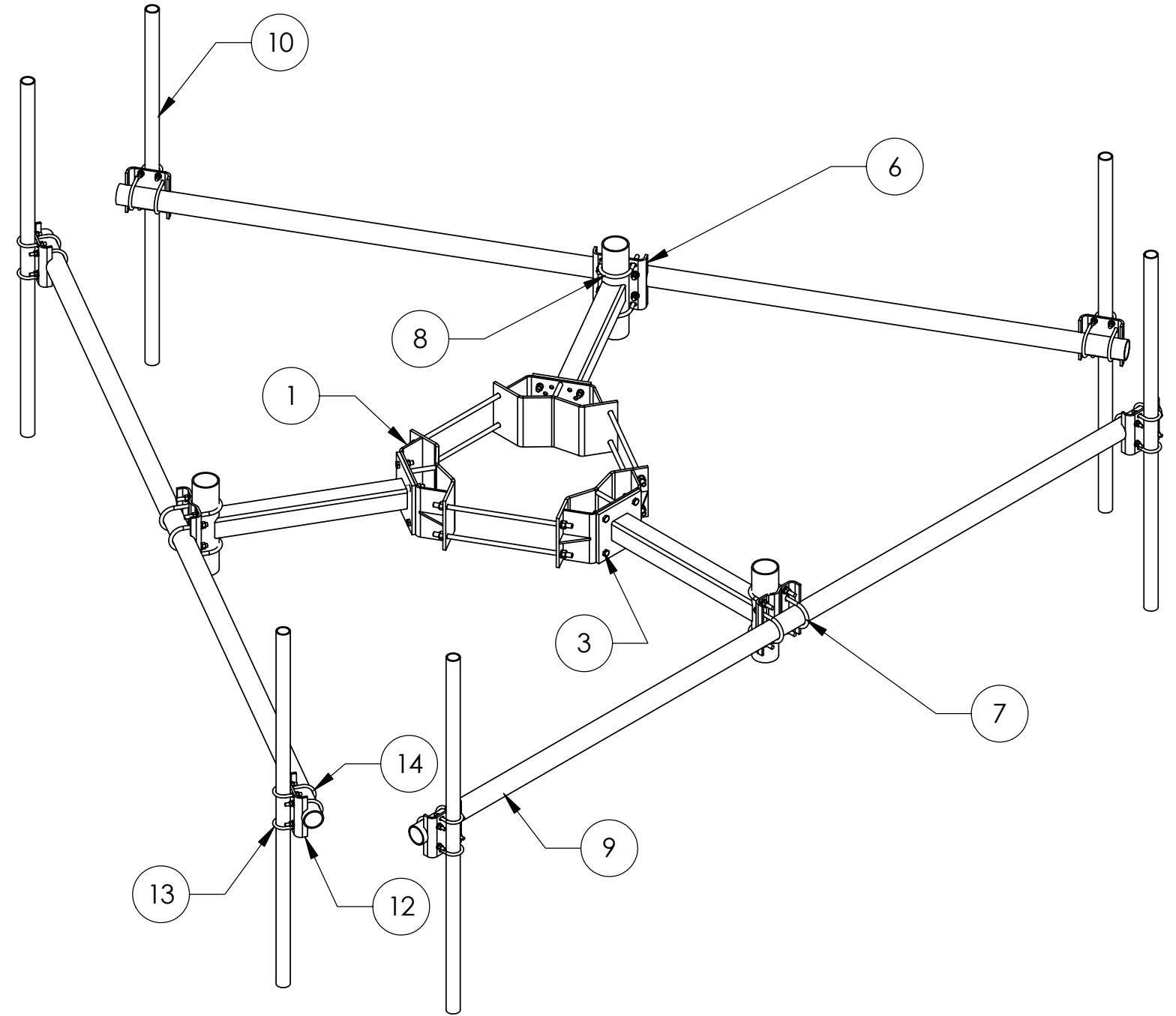



| | | | |
|--|-------------------|--|--|
| These drawings and specifications are the proprietary property of ANDREW CORPORATION and may be used only for the specific purpose authorized in writing by Andrew Corporation. ALL DIMENSIONS ARE IN INCHES U.O.S. TOLERANCES UNLESS OTHERWISE SPECIFIED: .X = .12 ANGLES 2' .XX = .06 FRACTIONS 1/32 .XXX = .03 REMOVE BURRS AND BREAK EDGES .005 DO NOT SCALE THIS PRINT | DRAWN BY: ACG | SHEET: 1 of 4 | PART NUMBER: MC-K14S-B SERIES |
| | CHECKED BY: TP | SCALE: NTS | DESCRIPTION: 10"-30" DIA. MONOPOLE T-FRAME |
| | DATE: 03/08/05 | MATERIAL: A36, A500, A53 | DRAWING TYPE: ASSEMBLY DRAWING |
| | REVISION: E | FINISH: GALV A123 WEIGHT: SEE TABLE |  ORLAND PARK, IL. 60462 U.S.A. |

| ITEM | PART NO. | DESCRIPTION | QTY. | WEIGHT |
|------|-------------|-------------------------------------|------|------------|
| 1 | MC-RM1030-3 | Ø 10" - 30" RINGMOUNT | 1 | 189.86 LBS |
| 2 | MT197H | HARDWARE KIT (ITEM 3) | 3 | |
| 3 | GB-0524A | 5/8" X 2-1/2" GALV. BOLT KIT (A325) | 12 | 0.34 LBS |
| 4 | MT197.01 | 36" SINGLE SUPPORT ARM | 3 | 65.98 LBS |
| 5 | MT216NSH | HARDWARE KIT (ITEMS 6-8) | 3 | |
| 6 | MT216.13 | CENTER BRACKET | 3 | 11.80 LBS |
| 7 | GUB-53560 | 5/8" X 3-5/8" X 6" GALV U-BOLT | 6 | 0.72 LBS |
| 8 | GUB-5456 | 5/8" X 4-5/8" X 6-1/2" GALV U-BOLT | 6 | 0.72 LBS |
| 9 | MT-547-174 | 3½" O.D. X 14'-6" GALV. PIPE | 3 | 109.73 LBS |
| 10 | MT-XXXX | 2-3/8" O.D. PIPE (SEE TABLE) | 6 | - |
| 11 | MT-219-H | HARDWARE KIT (Next 3 Items) | 6 | |
| 12 | MT217.01 | PIPE MOUNT PLATE | 6 | 7.53 LBS |
| 13 | GUB-4240 | 1/2" X 2-1/2" X 4" GALV U-BOLT KIT | 12 | 0.57 LBS |
| 14 | GUB-4356 | 1/2" X 3-5/8" X 6" GALV U-BOLT KIT | 12 | 0.83 LBS |

PART LIST FOR USE WITH T-FRAME MC-K14S-6 SERIES

| T-FRAME # | PIPE # | DESCRIPTION | QTY | T-FRAME WEIGHT |
|---------------|-----------|-----------------------------|-----|----------------|
| MC-K14S-B | - | - | 0 | 777.6 LBS |
| MC-K14S-6-72 | MT-651 | 2-3/8" O.D. X 72" GALV PIPE | 6 | 975.2 LBS |
| MC-K14S-6-96 | MT-651-96 | 2-3/8" O.D. X 96" GALV PIPE | 6 | 1019.2 LBS |
| MC-K14S-9-72 | MT-651 | 2-3/8" O.D. X 72" GALV PIPE | 9 | 1074.0 LBS |
| MC-K14S-9-96 | MT-651-96 | 2-3/8" O.D. X 96" GALV PIPE | 9 | 1140.0 LBS |
| MC-K14S-12-72 | MT-651 | 2-3/8" O.D. X 72" GALV PIPE | 12 | 1173.1 LBS |
| MC-K14S-12-96 | MT-651-96 | 2-3/8" O.D. X 96" GALV PIPE | 12 | 1260.8 LBS |

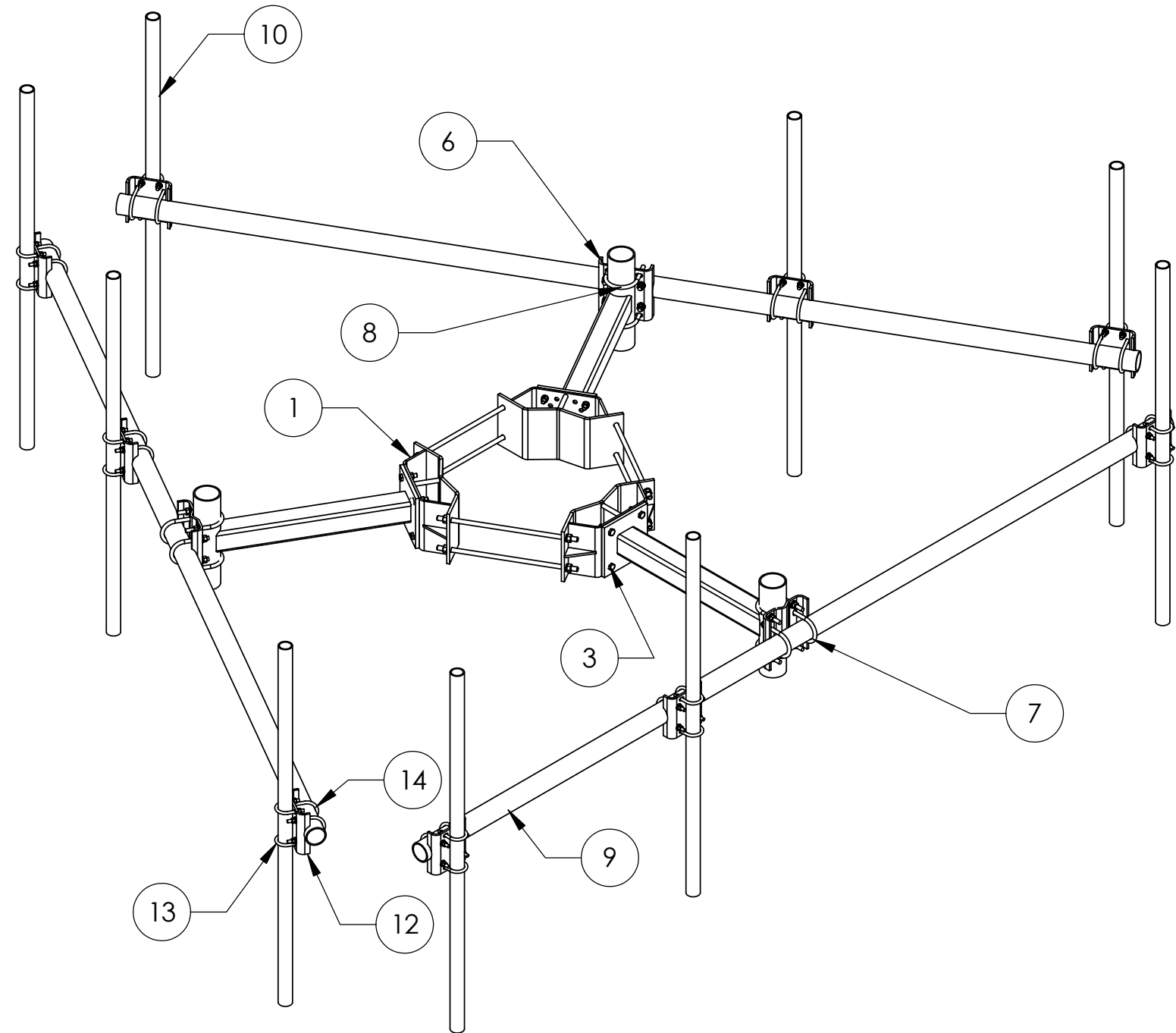


| | | | |
|--|----------------------|-----------------------------|---|
| These drawings and specifications are the proprietary property of ANDREW CORPORATION and may be used only for the specific purpose authorized in writing by Andrew Corporation. ALL DIMENSIONS ARE IN INCHES U.O.S. TOLERANCES UNLESS OTHERWISE SPECIFIED: .X = .12 ANGLES 2' .XX = .06 FRACTIONS 1/32 .XXX = .03 REMOVE BURRS AND BREAK EDGES .005 DO NOT SCALE THIS PRINT | DRAWN BY: ACG | SHEET: 2 of 4 | PART NUMBER: MC-K14S-6 SERIES |
| | CHECKED BY: TP | SCALE: NTS | DESCRIPTION: 10"-30" DIA. MONOPOLE T-FRAME |
| | DATE: 03/08/05 | MATERIAL: A36, A500, A53 | DRAWING TYPE: ASSEMBLY DRAWING |
| | REVISION: E | FINISH: GALV A123 |  ORLAND PARK, IL. 60462 U.S.A. |
| | WEIGHT: SEE TABLE | | |


| ITEM | PART NO. | DESCRIPTION | QTY. | WEIGHT |
|------|-------------|-------------------------------------|------|------------|
| 1 | MC-RM1030-3 | Ø 10" - 30" RINGMOUNT | 1 | 189.86 LBS |
| 2 | MT197H | HARDWARE KIT (ITEM 3) | 3 | |
| 3 | GB-0524A | 5/8" X 2-1/2" GALV. BOLT KIT (A325) | 12 | 0.34 LBS |
| 4 | MT197.01 | 36" SINGLE SUPPORT ARM | 3 | 65.98 LBS |
| 5 | MT216NSH | HARDWARE KIT (ITEMS 6-8) | 3 | |
| 6 | MT216.13 | CENTER BRACKET | 3 | 11.80 LBS |
| 7 | GUB-53560 | 5/8" X 3-5/8" X 6" GALV U-BOLT | 6 | 0.72 LBS |
| 8 | GUB-5456 | 5/8" X 4-5/8" X 6-1/2" GALV U-BOLT | 6 | 0.72 LBS |
| 9 | MT-547-174 | 3½" O.D. X 14'-6" GALV. PIPE | 3 | 109.73 LBS |
| 10 | MT-XXXX | 2-3/8" O.D. PIPE (SEE TABLE) | 9 | - |
| 11 | MT-219-H | HARDWARE KIT (Next 3 Items) | 9 | |
| 12 | MT217.01 | PIPE MOUNT PLATE | 9 | 7.53 LBS |
| 13 | GUB-4240 | 1/2" X 2-1/2" X 4" GALV U-BOLT KIT | 18 | 0.57 LBS |
| 14 | GUB-4356 | 1/2" X 3-5/8" X 6" GALV U-BOLT KIT | 18 | 0.83 LBS |

PART LIST FOR USE WITH T-FRAME MC-K14S-9 SERIES

| T-FRAME # | PIPE # | DESCRIPTION | QTY | T-FRAME WEIGHT |
|---------------|-----------|-----------------------------|-----|----------------|
| MC-K14S-B | - | - | 0 | 777.6 LBS |
| MC-K14S-6-72 | MT-651 | 2-3/8" O.D. X 72" GALV PIPE | 6 | 975.2 LBS |
| MC-K14S-6-96 | MT-651-96 | 2-3/8" O.D. X 96" GALV PIPE | 6 | 1019.2 LBS |
| MC-K14S-9-72 | MT-651 | 2-3/8" O.D. X 72" GALV PIPE | 9 | 1074.0 LBS |
| MC-K14S-9-96 | MT-651-96 | 2-3/8" O.D. X 96" GALV PIPE | 9 | 1140.0 LBS |
| MC-K14S-12-72 | MT-651 | 2-3/8" O.D. X 72" GALV PIPE | 12 | 1173.1 LBS |
| MC-K14S-12-96 | MT-651-96 | 2-3/8" O.D. X 96" GALV PIPE | 12 | 1260.8 LBS |



| | | | |
|---|---------------------------|-------------------------------------|---|
| <p>These drawings and specifications are the proprietary property of ANDREW CORPORATION and may be used only for the specific purpose authorized in writing by Andrew Corporation.</p> <p>ALL DIMENSIONS ARE IN INCHES U.O.S. TOLERANCES UNLESS OTHERWISE SPECIFIED: .X = .12 ANGLES 2' .XX = .06 FRACTIONS 1/32 .XXX = .03</p> <p>REMOVE BURRS AND BREAK EDGES .005</p> <p>DO NOT SCALE THIS PRINT</p> | <p>DRAWN BY: ACG</p> | <p>SHEET: 3 of 4</p> | <p>PART NUMBER: MC-K14S-9 SERIES</p> |
| | <p>CHECKED BY: TP</p> | <p>SCALE: NTS</p> | <p>DESCRIPTION: 10"-30" DIA. MONOPOLE T-FRAME</p> |
| | <p>DATE: 03/08/05</p> | <p>MATERIAL: A36, A500, A53</p> | <p>DRAWING TYPE: ASSEMBLY DRAWING</p> |
| | <p>REVISION: E</p> | <p>FINISH: GALV A123</p> | <p>WEIGHT: SEE TABLE</p> |

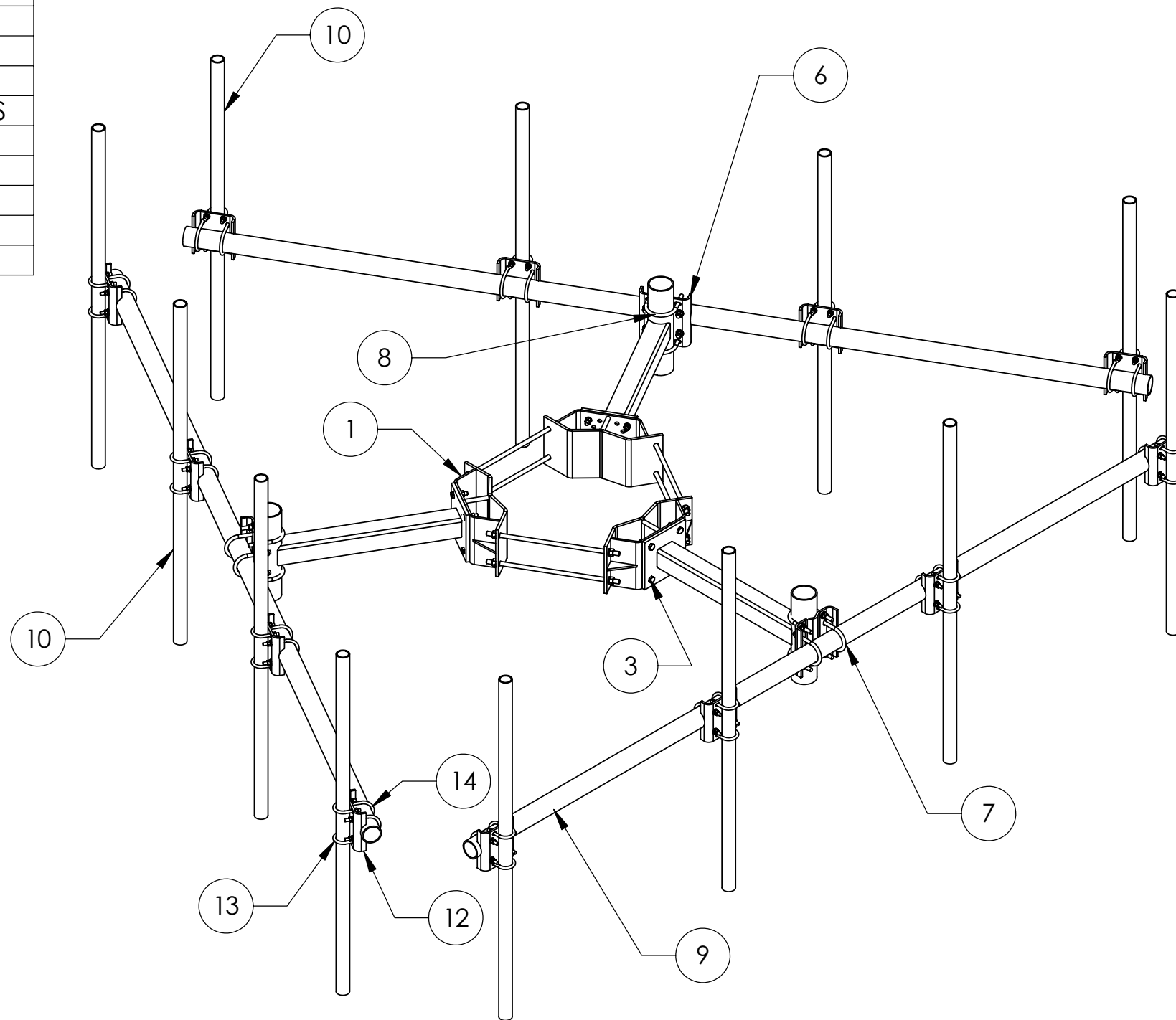



ORLAND PARK, IL. 60462
U.S.A.

| ITEM | PART NO. | DESCRIPTION | QTY. | WEIGHT |
|------|-------------|-------------------------------------|------|------------|
| 1 | MC-RM1030-3 | Ø 10" - 30" RINGMOUNT | 1 | 189.86 LBS |
| 2 | MT197H | HARDWARE KIT (ITEM 3) | 3 | |
| 3 | GB-0524A | 5/8" X 2-1/2" GALV. BOLT KIT (A325) | 12 | 0.34 LBS |
| 4 | MT197.01 | 36" SINGLE SUPPORT ARM | 3 | 65.98 LBS |
| 5 | MT216NSH | HARDWARE KIT (ITEMS 6-8) | 3 | |
| 6 | MT216.13 | CENTER BRACKET | 3 | 11.80 LBS |
| 7 | GUB-53560 | 5/8" X 3-5/8" X 6" GALV U-BOLT | 6 | 0.72 LBS |
| 8 | GUB-5456 | 5/8" X 4-5/8" X 6-1/2" GALV U-BOLT | 6 | 0.72 LBS |
| 9 | MT-547-174 | 3½" O.D. X 14'-6" GALV. PIPE | 3 | 109.73 LBS |
| 10 | MT-XXXX | 2-3/8" O.D. PIPE (SEE TABLE) | 12 | - |
| 11 | MT-219-H | HARDWARE KIT (Next 3 Items) | 12 | |
| 12 | MT217.01 | PIPE MOUNT PLATE | 12 | 7.53 LBS |
| 13 | GUB-4240 | 1/2" X 2-1/2" X 4" GALV U-BOLT KIT | 24 | 0.57 LBS |
| 14 | GUB-4356 | 1/2" X 3-5/8" X 6" GALV U-BOLT KIT | 24 | 0.83 LBS |

PART LIST FOR USE WITH T-FRAME MC-K14S-12 SERIES

| T-FRAME # | PIPE # | DESCRIPTION | QTY | T-FRAME WEIGHT |
|---------------|-----------|-----------------------------|-----|----------------|
| MC-K14S-B | - | - | 0 | 777.6 LBS |
| MC-K14S-6-72 | MT-651 | 2-3/8" O.D. X 72" GALV PIPE | 6 | 975.2 LBS |
| MC-K14S-6-96 | MT-651-96 | 2-3/8" O.D. X 96" GALV PIPE | 6 | 1019.2 LBS |
| MC-K14S-9-72 | MT-651 | 2-3/8" O.D. X 72" GALV PIPE | 9 | 1074.0 LBS |
| MC-K14S-9-96 | MT-651-96 | 2-3/8" O.D. X 96" GALV PIPE | 9 | 1140.0 LBS |
| MC-K14S-12-72 | MT-651 | 2-3/8" O.D. X 72" GALV PIPE | 12 | 1173.1 LBS |
| MC-K14S-12-96 | MT-651-96 | 2-3/8" O.D. X 96" GALV PIPE | 12 | 1260.8 LBS |



| | | | |
|--|----------------------|-----------------------------|---|
| These drawings and specifications are the proprietary property of ANDREW CORPORATION and may be used only for the specific purpose authorized in writing by Andrew Corporation. ALL DIMENSIONS ARE IN INCHES U.O.S. TOLERANCES UNLESS OTHERWISE SPECIFIED: .X = .12 ANGLES 2' .XX = .06 FRACTIONS 1/32 .XXX = .03 REMOVE BURRS AND BREAK EDGES .005 DO NOT SCALE THIS PRINT | DRAWN BY: ACG | SHEET: 4 of 4 | PART NUMBER: MC-K14S-12 SERIES |
| | CHECKED BY: TP | SCALE: NTS | DESCRIPTION: 10"-30" DIA. MONOPOLE T-FRAME |
| | DATE: 03/08/05 | MATERIAL: A36, A500, A53 | DRAWING TYPE: ASSEMBLY DRAWING |
| | REVISION: E | FINISH: GALV A123 |  ORLAND PARK, IL. 60462 U.S.A. |
| | WEIGHT: SEE TABLE | | |