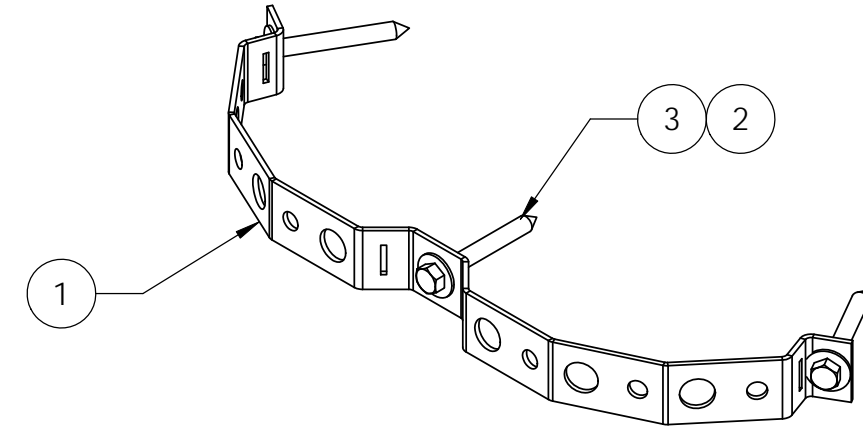
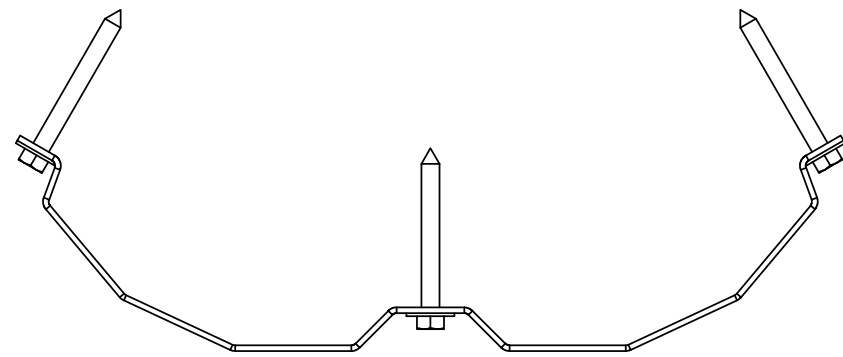
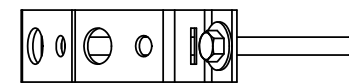
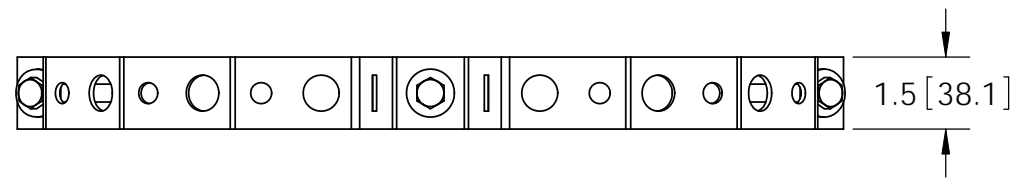


ITEM	PART NO.	DESCRIPTION	QTY.	WEIGHT
1	RMUSBG.01	ROUND MEMBER BRACKET	10	1.00 LBS
2	GWF-03	3/8" GALV FLAT WASHER	30	0.01 LBS
3	GLS-0330	3/8" X 3" GALV LAG SCREW	30	0.11 LBS

REVISIONS				
REV.	ZONE	DESCRIPTION	BY	DATE
A		INITIAL RELEASE	MSM	05/14/12
B		LAG SCREW WAS GLS-0334	MSM	11/15/12



SOLD IN KITS OF 10 COMPLETE ASSEMBLIES



NOTES:
1. ALL METRIC DIMENSIONS ARE IN BRACKETS.

These drawings and specifications are the proprietary property of CommScope Inc. and may be used only for the specific purpose authorized in writing by CommScope Inc. ALL DIMENSIONS ARE IN INCHES U.O.S. TOLERANCES UNLESS OTHERWISE SPECIFIED: .X = ± .12 ANGLES ±2° .XX = ± .06 FRACTIONS ±1/32 .XXX = ± .03 REMOVE BURRS AND BREAK EDGES .005 DO NOT SCALE THIS PRINT	DRAWN BY: MSM	SHEET: 1 of 1	PART NUMBER: WP-USBG-6
	CHECKED BY: TP	SCALE: NTS	DESCRIPTION: Wood Pole Universal Member Support Bracket
	DATE: 05/14/12	MATERIAL: A36	DRAWING TYPE: ASSEMBLY DRAWING
	REVISION: B	FINISH: GALV A123	 Hickory, NC 28602 U.S.A.
	WEIGHT: 13.58 LBS		