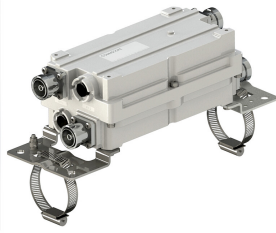


E15V87P64



CS-IMF 2575-2615 RJ 26 38dB DC

OBSOLETE

Product Classification

Product Type Interference mitigation filter

General Specifications

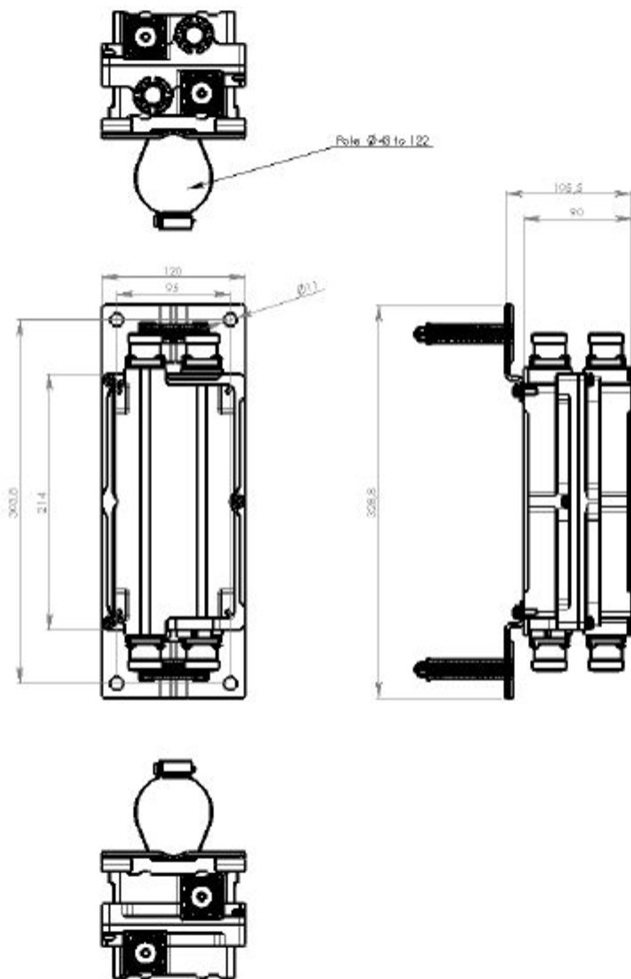
Color Gray
Modularity 2-Twin
Mounting Pipe Hardware Band clamps (2)
RF Connector Interface 7-16 DIN Female
RF Connector Interface Body Style Long neck

Dimensions

Height 214 mm | 8.425 in
Width 120 mm | 4.724 in
Depth 90 mm | 3.543 in
Ground Screw Diameter 5 mm | 0.197 in

E15V87P64

Outline Drawing



Electrical Specifications, dc Power/Alarm

Lightning Surge Current	3 kA
Lightning Surge Current Waveform	10/350 waveform

Electrical Specifications

Sub-module	1 2
Branch	1
License Band	IMT 2600, Band Pass

Electrical Specifications, Band Pass

Frequency Range, MHz	2575–2615
-----------------------------	-----------

E15V87P64

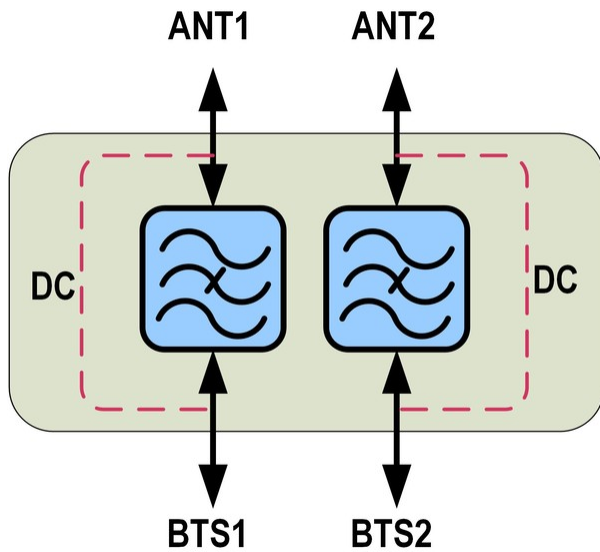
Insertion Loss, maximum, dB	1.3
Insertion Loss, typical, dB	0.5
Total Group Delay, maximum, ns	100
Total Group Delay, typical, ns	40
Return Loss, minimum, dB	18
Return Loss, typical, dB	20
Input Power, RMS, maximum, W	250
Input Power, PEP, maximum, W	1500
3rd Order PIM, maximum, dBc	-150
3rd Order PIM, typical, dBc	-152
3rd Order PIM Test Method	Two +43 dBm carriers

Electrical Specifications, Band Reject

Frequency Range, MHz	2500–2570 2620–2690
Attenuation, minimum, dB	38

E15V87P64

Block Diagram



Pass Band
TX/Rx 2575-2615MHz

Rejection Band
2500 – 2570 MHz
2620 – 2690MHz

Attenuation
38dB

Environmental Specifications

Operating Temperature	-10 °C to +55 °C (+14 °F to +131 °F)
Relative Humidity	Up to 100%
Ingress Protection Test Method	IEC 60529:2001, IP67

Packaging and Weights

Included	Mounting hardware
Weight, without mounting hardware	3.5 kg 7.716 lb