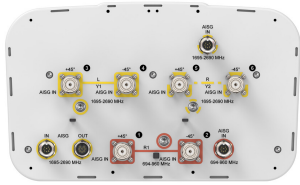


# RVVPX308.11B-T2H



6-port sector antenna, 2x 694–960 and 4x 1695–2690 MHz, 65° HPBW, 3x RET with manual override and internal Bias-Tee's.

- Internal RET actuators are connected in SRET configuration, with dedicated AISG ports for each band
- Each port has an integrated bias tee, and each band has its own smart switch that automatically selects between bias tee or AISG inputs according to a predetermined priority table

## General Specifications

<b>Antenna Type</b>	Sector
<b>Band</b>	Multiband
<b>Grounding Type</b>	RF connector body grounded to reflector and mounting bracket
<b>Performance Note</b>	Outdoor usage   Wind loading figures are validated by wind tunnel measurements described in white paper WP-112534-EN
<b>Radome Material</b>	Fiberglass, UV resistant
<b>Radiator Material</b>	Low loss circuit board
<b>Reflector Material</b>	Aluminum
<b>RF Connector Interface</b>	4.3-10 Female
<b>RF Connector Location</b>	Bottom
<b>RF Connector Quantity, high band</b>	4
<b>RF Connector Quantity, low band</b>	2
<b>RF Connector Quantity, total</b>	6

## Remote Electrical Tilt (RET) Information

<b>RET Interface</b>	8-pin DIN Female   8-pin DIN Male
<b>RET Interface, quantity</b>	1 female   3 male
<b>Input Voltage</b>	10–30 Vdc
<b>Internal Bias Tee</b>	Port 1   Port 2   Port 3   Port 4   Port 5   Port 6
<b>Internal RET</b>	High band (2)   Low band (1)
<b>Power Consumption, idle state, maximum</b>	2 W
<b>Power Consumption, normal conditions, maximum</b>	13 W
<b>Protocol</b>	3GPP/AISG 2.0 (Single RET)

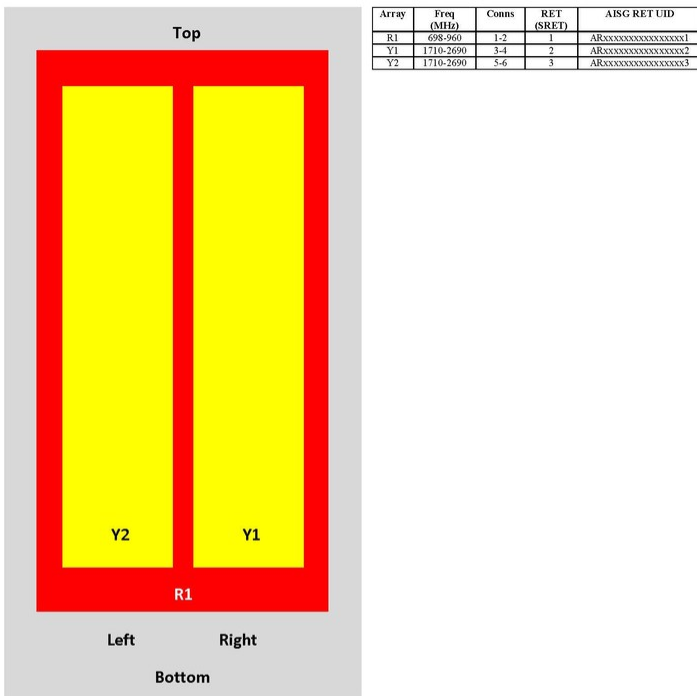
## Dimensions

# RVVPX308.11B-T2H

<b>Width</b>	350 mm   13.78 in
<b>Depth</b>	208 mm   8.189 in
<b>Length</b>	2065 mm   81.299 in
<b>Net Weight, without mounting kit</b>	29.7 kg   65.477 lb

## Array Layout

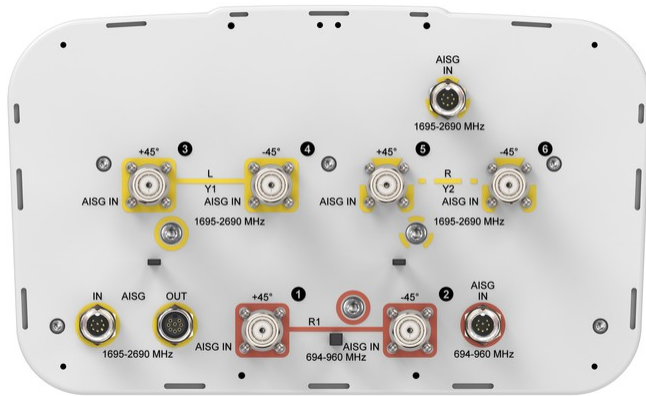
RVVPX



View from the front of the antenna  
(Sizes of colored boxes are not true depictions of array sizes)

## Port Configuration

# RVVPX308.11B-T2H



## Electrical Specifications

<b>Impedance</b>	50 ohm
<b>Operating Frequency Band</b>	1695 – 2690 MHz   694 – 960 MHz
<b>Polarization</b>	±45°
<b>Total Input Power, maximum</b>	800 W @ 50 °C

## Electrical Specifications

Frequency Band, MHz	694–790	790–890	890–960	1695–1920	1920–2180	2300–2690
<b>Gain, dBi</b>	15.3	15.9	16.2	17.4	17.9	18.4
<b>Beamwidth, Horizontal, degrees</b>	69	67	65	62	62	62
<b>Beamwidth, Vertical, degrees</b>	12.5	11.1	10.2	7.5	6.6	5.4
<b>Beam Tilt, degrees</b>	0–10	0–10	0–10	0–10	0–10	0–10
<b>USLS (First Lobe), dB</b>	18	18	18	18	18	18
<b>Null Fill, dB</b>	-22	-22	-22	-22	-22	-22
<b>Front-to-Back Ratio at 180°, dB</b>	29	32	33	33	38	38
<b>Isolation, Cross Polarization, dB</b>	28	28	28	30	30	30
<b>Isolation, Inter-band, dB</b>	30	30	30	30	30	30
<b>VSWR   Return loss, dB</b>	1.5 14.0	1.5 14.0	1.5 14.0	1.5 14.0	1.5 14.0	1.5 14.0
<b>PIM, 3rd Order, 2 x 20 W, dBc</b>	-150	-150	-150	-150	-150	-150
<b>Input Power per Port at 50°C, maximum, watts</b>	175	175	175	175	175	175

# RVVPX308.11B-T2H

## Electrical Specifications, BASTA

Frequency Band, MHz	694–790	790–890	890–960	1695–1920	1920–2180	2300–2690
Gain by all Beam Tilts, average, dBi	15.1	15.7	16.1	17.1	17.7	18.2
Gain by all Beam Tilts Tolerance, dB	±0.4	±0.3	±0.1	±0.5	±0.3	±0.4
Gain by Beam Tilt, average, dBi	0°   15.1 5°   15.1 10°   15.0	0°   15.7 5°   15.7 10°   15.7	0°   16.1 5°   16.1 10°   16.1	0°   17.1 5°   17.1 10°   17.2	0°   17.7 5°   17.7 10°   17.7	0°   18.2 5°   18.2 10°   18.0
Beamwidth, Horizontal Tolerance, degrees	±0.9	±1.1	±1.8	±2.8	±2.5	±5.8
Beamwidth, Vertical Tolerance, degrees	±0.7	±0.6	±0.3	±0.5	±0.5	±0.4
USLS, beampeak to 20° above beampeak, dB	18	18	18	18	18	18
Front-to-Back Total Power at 180° ± 30°, dB	25	26	27	26	28	29
CPR at Boresight, dB	15	17	17	18	20	19
CPR at Sector, dB	12	12	14	13	12	10

## Mechanical Specifications

Wind Loading @ Velocity, frontal	348.0 N @ 150 km/h (78.2 lbf @ 150 km/h)
Wind Loading @ Velocity, lateral	294.0 N @ 150 km/h (66.1 lbf @ 150 km/h)
Wind Loading @ Velocity, maximum	737.0 N @ 150 km/h (165.7 lbf @ 150 km/h)
Wind Loading @ Velocity, rear	369.0 N @ 150 km/h (83.0 lbf @ 150 km/h)
Wind Speed, maximum	241 km/h (150 mph)

## Packaging and Weights

Width, packed	436 mm   17.165 in
Depth, packed	320 mm   12.598 in
Length, packed	2250 mm   88.583 in
Weight, gross	50.2 kg   110.672 lb

## Regulatory Compliance/Certifications

Agency	Classification
CHINA-ROHS	Above maximum concentration value
ISO 9001:2015	Designed, manufactured and/or distributed under this quality management system
ROHS	Compliant/Exempted

# RVVPX308.11B-T2H

---

UK-ROHS

Compliant/Exempted



## Included Products

- T-029-GL-E – Adjustable Tilt Pipe Mounting Kit for 2.362"-4.5" (60-115mm) OD round members for panel antennas. Includes 2 clamp sets.

## \* Footnotes

**Performance Note** Severe environmental conditions may degrade optimum performance