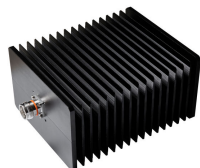


T-100-UW-43-F

Termination Load, 0–6000 MHz



OBSOLETE

This product was discontinued on: September 30, 2021

Product Classification

| | |
|------------------------------|---|
| Regional Availability | Asia Australia/New Zealand EMEA Latin America North America |
| Product Type | Termination Load |

General Specifications

| | |
|------------------------------|------------------|
| Device Type | Termination Load |
| Application | Indoor/Outdoor |
| Color | Black |
| Inner Contact Plating | Silver |
| Interface | 4.3-10 Female |
| Outer Contact Plating | Trimetal |

Dimensions

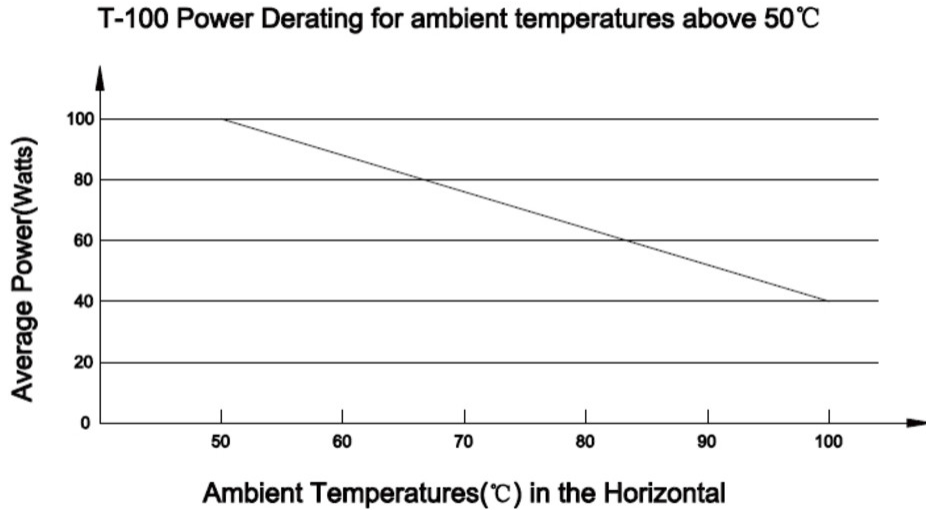
| | |
|---------------|-------------------|
| Height | 89 mm 3.504 in |
| Width | 140 mm 5.512 in |
| Length | 190 mm 7.48 in |

Electrical Specifications

| | |
|---------------------------------|--------------|
| Average Power, maximum | 100 W |
| Impedance | 50 ohm |
| Operating Frequency Band | 0 – 6000 MHz |
| VSWR | 1.2 |

T-100-UW-43-F

Derating Curve



Environmental Specifications

| | |
|---------------------------------------|--------------------------------------|
| Operating Temperature | -25 °C to +50 °C (-13 °F to +122 °F) |
| Relative Humidity | Up to 100% |
| Ingress Protection Test Method | IEC 60529:2001, IP65 |

Packaging and Weights

| | |
|-----------------------|--------------------|
| Height, packed | 160 mm 6.299 in |
| Width, packed | 235 mm 9.252 in |
| Length, packed | 380 mm 14.961 in |
| Weight, gross | 2.45 kg 5.401 lb |
| Weight, net | 2 kg 4.409 lb |

Regulatory Compliance/Certifications

| Agency | Classification |
|---------------|--|
| ISO 9001:2015 | Designed, manufactured and/or distributed under this quality management system |



T-100-UW-43-F
