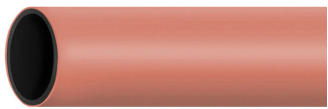


# CX3299999 | 100T135 EMPTY DUCT COEX



ConQuest® Empty Conduit, 1 in, SDR 13.5, terracotta

- \*Product complies with the Build America, Buy America Act (BABAA) requirements of the Infrastructure Investment and Jobs Act of 2021 (Pub. L. 117- 58, §§ 70901-70953), or is the subject of a waiver approved by the Secretary of Commerce or designee. Compliance requirements and waiver applicability vary based on government funding program. Check the laws and regulations for your specific program.

## Product Classification

|                       |   |
|-----------------------|---|
| Regional Availability | North America                               |
| Product Type          | Empty conduit                               |
| Product Brand         | ConQuest®                                   |
| Government Funding    | Build America Buy America (BABA) compliant* |

## General Specifications

|                     |                            |
|---------------------|----------------------------|
| Color               | Terracotta                 |
| Conduit Type        | Non-toneable               |
| Density Test Method | ASTM D792A                 |
| Density, maximum    | 0.955 g/cm³   0.035 lb/in³ |
| Density, minimum    | 0.941 g/cm³   0.034 lb/in³ |
| Design Standard     | ASTM D3350-05              |
| Wall Type           | Smooth                     |

## Dimensions

|                            |                      |
|----------------------------|----------------------|
| Length                     | 914.4 m   3000 ft    |
| Inner Diameter, nominal    | 27.965 mm   1.101 in |
| Outer Diameter, nominal    | 33.401 mm   1.315 in |
| Wall Thickness Designation | SDR 13.5             |
| Wall Thickness, minimum    | 2.464 mm   0.097 in  |
| Nominal Size               | 1 in                 |

## Material Specifications

|                               |                           |
|-------------------------------|---------------------------|
| Flexural Modulus, minimum     | 551.581 N/mm²   80000 psi |
| Flexural Property Test Method | ASTM D790                 |

# CX3299999 | 100T135 EMPTY DUCT COEX

|                                |                                  |
|--------------------------------|----------------------------------|
| Hydrostatic Design Basis       | Not pressure rated               |
| Hydrostatic Design Test Method | ASTM D2837                       |
| Material Type                  | High density polyethylene (HDPE) |
| Melt Flow Rate Test Method     | ASTM D1238                       |
| Melt Flow Rate, maximum        | 0.39 g/10 min                    |

## Mechanical Specifications

|                                    |                         |
|------------------------------------|-------------------------|
| Minimum Bend Radius, unsupported   | 355.6 mm   14 in        |
| Tensile Property Test Method       | ASTM D638               |
| Tensile Strength at yield, minimum | 20.684 N/mm²   3000 psi |
| Pulling Tension, maximum           | 358.338 kg   790 lb     |

## Environmental Specifications

|                                       |                                     |
|---------------------------------------|-------------------------------------|
| Environmental Stress Crack Resistance | Failure rate of 10% within 96 hours |
| Environmental Stress Test Method      | ASTM D1693, ESCR Condition B        |

## Packaging and Weights

|             |                          |
|-------------|--------------------------|
| Weight, net | 251.5 kg/km   169 lb/kft |
|-------------|--------------------------|

## Regulatory Compliance/Certifications

| Agency        | Classification   |
|---------------|--|
| ISO 9001:2015 | Designed, manufactured and/or distributed under this quality management system |

## \* Footnotes

|                                       |  |
|---------------------------------------|--|
| Environmental Stress Crack Resistance | ESCR—Environmental Stress Crack Resistance |
|---------------------------------------|--|